



Kennington Park Road, London, SE11

£359,950 Leasehold

Winkworth are proud to present this charming one-bedroom period flat set within a beautiful Victorian terrace, only a stones throw from Kennington tube station. EPC Rating C.

LOCATION

Positioned moments away from Kennington Underground Station (Northern Line) and just a short walk away from Kennington Park, this property is in the heart of Kennington and close to amenities including restaurants, pubs and local supermarkets.

DESCRIPTION

The flat is located on the second floor of this attractive, four-storey Grade II listed Georgian building. It is arranged to provide an open plan kitchen reception room with a fabulous bow window overlooking the rooftops of Kennington and beyond, a generous double bedroom and a bathroom.

The kitchen provides ample storage and worktop space, as well as an integrated gas hob with extractor fan above and oven below, washing machine, and fridge.

The kitchen opens out into the reception room, which benefits from a bow window spanning the width of the room. There is ample space for a three-seater sofa, coffee table and a dining table and chairs to seat four people.

The bathroom, conveniently located off the landing between the bedroom and reception room, comprises a walk-in shower, wash basin, heated towel rail and a W.C.

The bedroom sits at the front of the property and benefits from two sash windows overlooking the street below. There is plenty of space for a large double bed, bedside tables and a sizeable wardrobe, if you so desire.

LOCAL AUTHORITY

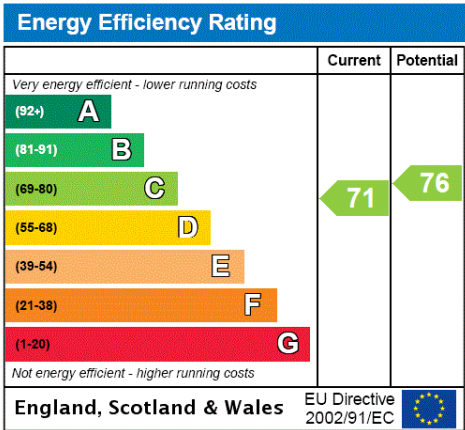
Southwark Council, London
Council Tax Band D

TENURE

Leasehold : 125 years remaining
Ground rent : Nil
Service charge : Circa £1,604 per annum

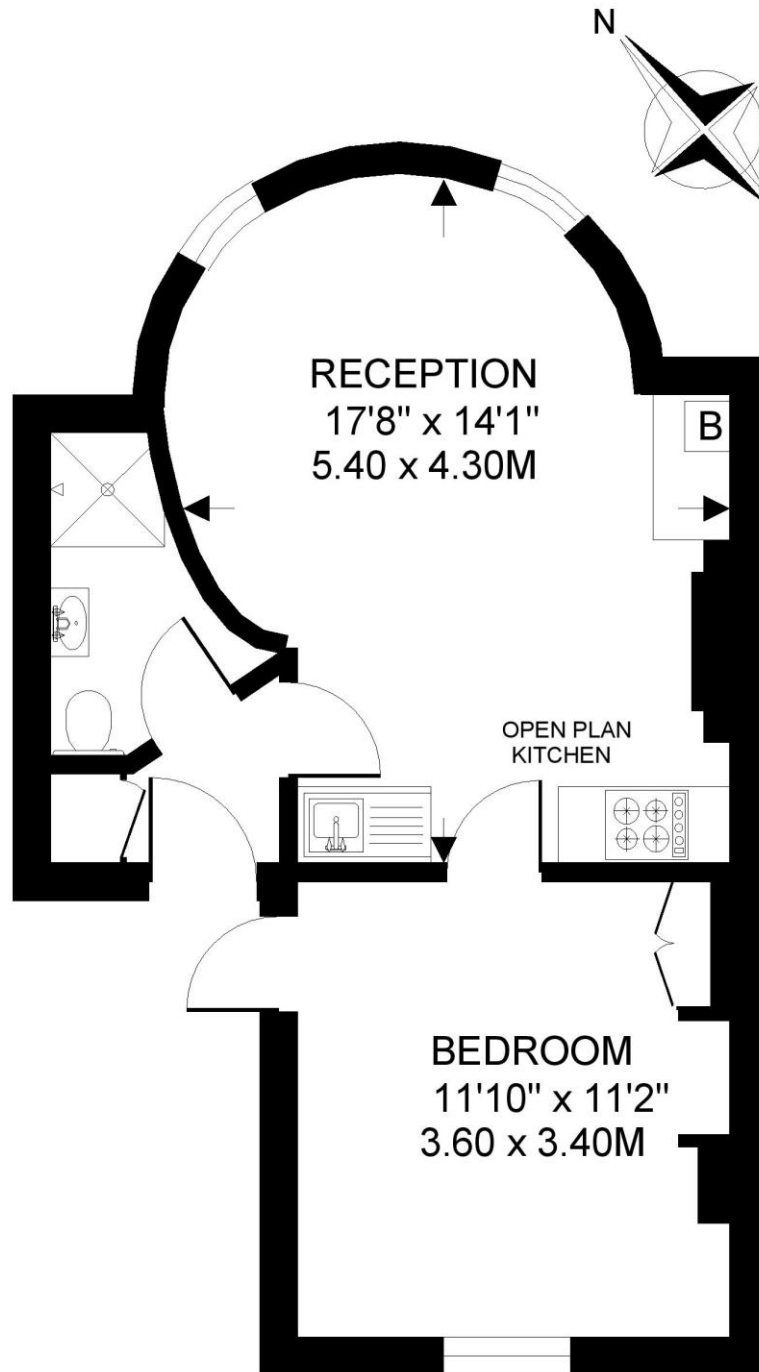
DIRECTIONS

Kennington Underground Station (Northern Line – both branches) is approximately 0.1 miles away. Elephant & Castle Underground/Overground Stations (National Rail, Northern & Bakerloo Lines) are approximately 0.7 miles away. Kennington Park Road is also well-served by a frequent bus service to the City, West End and beyond.





KENNINGTON PARK ROAD. SE11
1 BEDROOM FLAT
Approximate gross floor area
402 SQ.FT / 37.3 SQ.M.



SECOND FLOOR

This floorplan is for illustration purposes only and is not to scale. The position and size of doors, windows, appliances and other features are approximate.

Kennington | 020 7587 0600 | kennington@winkworth.co.uk