



Ashburnham Road, Kensal Rise, NW10
£1,995,000 *Freehold*

4  2  2 

An exceptional and fully extended, four bedroom end-of-terrace family home located in the heart of Kensal Rise on Ashburnham Road.

KEY FEATURES

- FOUR BEDROOM
- FULLY EXTENDED
- EXCELLENT CONDITION
- PRIME LOCATION
- END-OF-TERRACE
- FREEHOLD
- SOUTH FACING GARDEN



Kensal Rise & Queens Park

0208 960 4947 | kensalrise@winkworth.co.uk

Winkworth

for every step...

Winkworth wishes to inform prospective buyers and tenants that these particulars are a guide and act as information only. All our details are given in good faith and believed to be correct at the time of printing but they don't form part of an offer or contract. No Winkworth employee has authority to make or give any representation or warranty in relation to this property. All fixtures and fittings, whether fitted or not are deemed removable by the vendor unless stated otherwise and room sizes are measured between internal wall surfaces, including furnishings.



DESCRIPTION

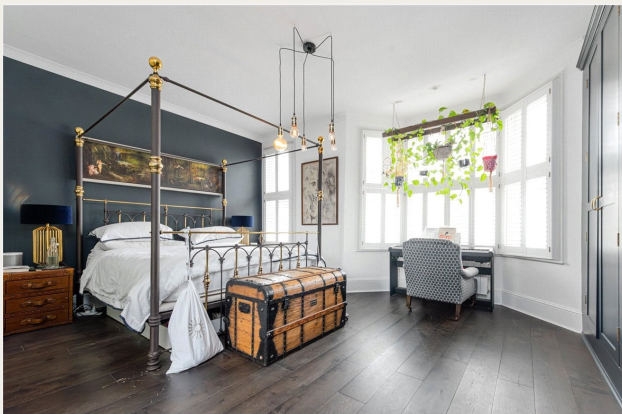
Welcome to this truly exceptional home on Ashburnham Road, NW10. From the moment you enter, the attention to detail and unique design set this property apart. The front reception room flows seamlessly into a thoughtfully designed study area, leading to a striking open-plan, eat-in kitchen extension that has been recognised with an architectural design award. This impressive space opens directly onto a breath taking, landscaped garden—meticulously designed and planted to create a private oasis perfect for entertaining or relaxing.

Upstairs, the first floor is home to a magnificent master suite, finished to the highest standard with extensive

storage, a dressing area, and a luxurious en-suite bathroom. A generous second bedroom with fitted storage and a beautifully appointed family bathroom complete this level.

On the second floor, you'll find a versatile bedroom currently arranged as a study, benefiting from large eaves storage, as well as a further spacious double bedroom with excellent storage. A stylish Jack-and-Jill bathroom services both rooms, offering flexibility for family living or guests.

Every inch of this home has been interior designed to perfection, showcasing a rich and eclectic style while offering comfort, functionality, and exceptional space. Quite simply, this is a house like no other in the Kensal Rise area.





LOCATION

Ashburnham Road enjoys a prime position in the heart of Kensal Rise, a vibrant and sought-after neighbourhood. The property is within easy reach of both Kensal Green (Bakerloo Line & Overground) and Kensal Rise (Overground) stations, providing excellent links into Central London. Numerous bus routes also serve the area, ensuring great connectivity. The road is moments from the independent shops, cafés, and restaurants of Chamberlayne Road, as well as nearby Queens Park and Notting Hill. Local parks and green spaces, excellent schools, and a friendly community make this a perfect place to call home.

For more information, scan the QR code or visit the link below



<https://www.winkworth.co.uk/sale/property/KQP250446>

Where no figures are shown, we have been unable to ascertain the information. All figures that are shown were correct at the time of printing.

MATERIAL INFO

Tenure: Freehold

Council Tax Band: E

EPC rating: C

Score	Energy rating	Current	Potential
92+	A		
81-91	B		
69-80	C	74 C	81 B
55-68	D		
39-54	E		
21-38	F		
1-20	G		

Ashburnham Road

Approx. Total Internal Area 2306 Sq Ft - 214.23 Sq M
(Including Eaves Storage)

Approx. Gross Internal Area 2141 Sq Ft - 198.91 Sq M
(Excluding Eaves Storage)



For Illustration Purposes Only - Not To Scale

This floor plan should be used as a general outline for guidance only and does not constitute in whole or in part an offer or contract. Any intending purchaser or lessee should satisfy themselves by inspection, searches, enquiries and full survey as to the correctness of each statement. Any areas, measurements or distances quoted are approximate and should not be used to value a property or be the basis of any sale or let.

Copyright Morrianti Photography & Design LTD

Kensal Rise & Queens Park

0208 960 4947 | kensalrise@winkworth.co.uk

Winkworth

for every step...

Winkworth wishes to inform prospective buyers and tenants that these particulars are a guide and act as information only. All our details are given in good faith and believed to be correct at the time of printing but they don't form part of an offer or contract. No Winkworth employee has authority to make or give any representation or warranty in relation to this property. All fixtures and fittings, whether fitted or not are deemed removable by the vendor unless stated otherwise and room sizes are measured between internal wall surfaces, including furnishings.