



ST. MARGARETS ROAD, LONDON, N17

£785,000 FREEHOLD

DESCRIPTION:

This beautifully presented three bedroom Victorian family house affords a quiet and sought after location close to transport links, shops and parks.

Sole Agent

Harringay | 020 8800 5151 | harringay@winkworth.co.uk

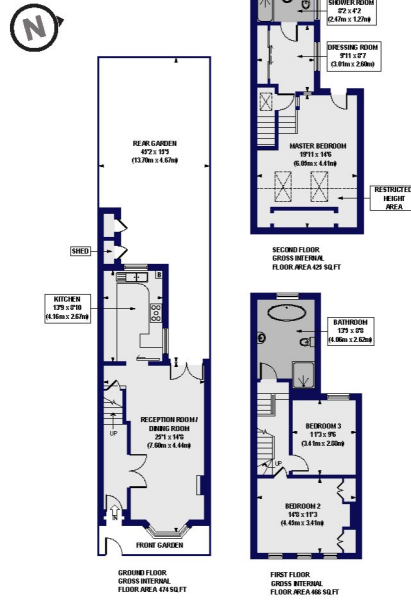
Winkworth

for every step...

winkworth.co.uk

Margarets Road, N17

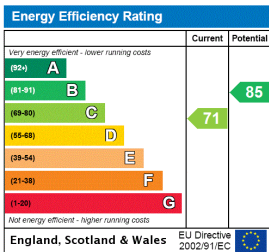
Approx. Gross Internal Floor Area 1365 sq. ft / 126.85 sq. m (Including Restricted Height Area)
 Approx. Gross Internal Floor Area 1278 sq. ft / 118.73 sq. m (Excluding Restricted Height Area)



All measurements of walls, doors, windows, fittings, and appliances, including the specification, are given in the floor plan and do not constitute any warranty or representation by the seller, their agent or agent's nominee. Any measurements shown may vary from the actual dimensions as shown in the photographs of the information contained in these plans. Dimensions for illustration purposes only and should be verified in any prospective purchases.



This floorplan is for illustration purposes only and is not to scale. The position and size of doors, windows, appliances and other features are approximate.



Harringay | 020 8800 5151 | harringay@winkworth.co.uk



for every step...

winkworth.co.uk

winkworth wishes to inform prospective buyers and tenants that these particulars are a guide and act as information only. All our details are given in good faith and believed to be correct at the time of printing but they don't form part of an offer or contract. No winkworth employee has authority to make or give any representation or warranty in relation to this property. All fixtures and fittings, whether fitted or not are deemed removable by the vendor unless stated otherwise and room sizes are measured between internal wall surfaces, including furnishings.