



REGENTS RIVERSIDE, READING, BERKSHIRE, RG1 8QS
£1,700 PER MONTH FURNISHED

TWO DOUBLE BEDROOM TOP FLOOR APARTMENT IN SOUGHT AFTER GATED RIVERSIDE COMPLEX IN READING TOWN CENTRE

Reading | 0118 4022 300 | reading@winkworth.co.uk

Winkworth

for every step...

winkworth.co.uk



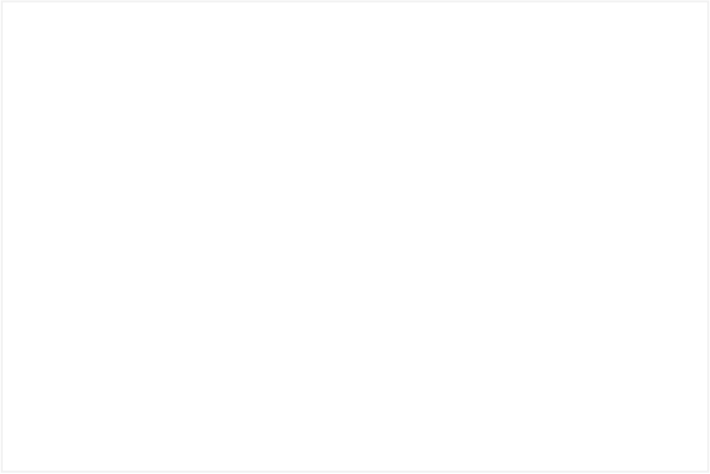
DESCRIPTION:

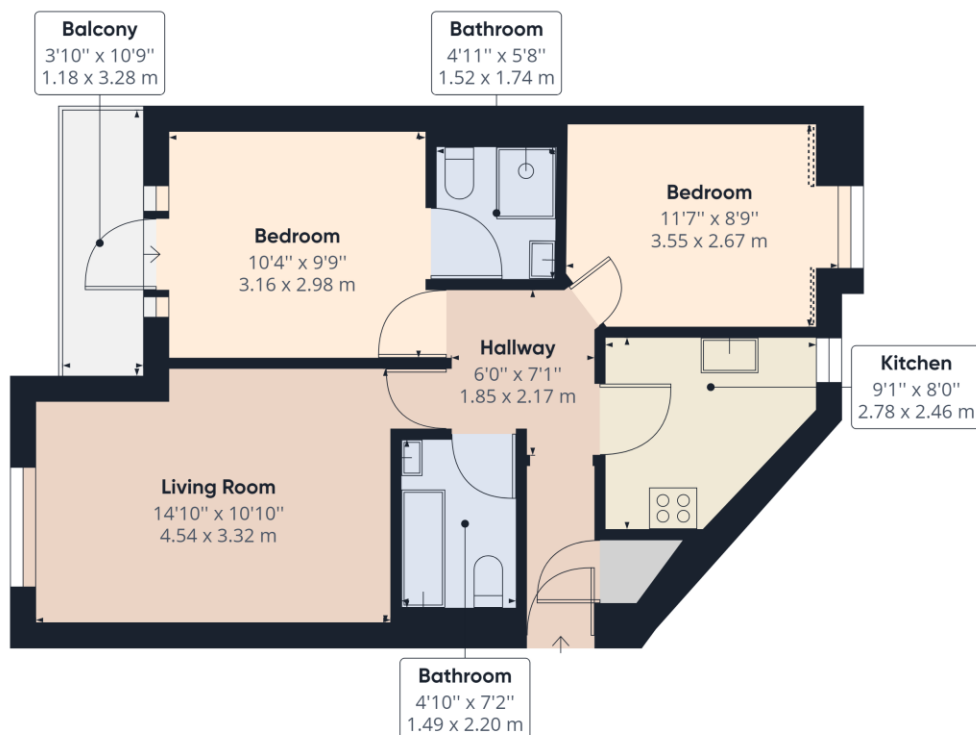
Two double bedroom top floor apartment in sought after gated riverside complex in Reading town centre and a short walk to Reading railway station. The property comprises open plan living/ dining room, kitchen, two double bedrooms, the master with balcony and a modern en suite shower room and a refitted main bathroom. The lounge & master bedroom are overlooking the River Thames. The apartment also benefits from a video entry phone system, communal gardens and a secure gated allocated parking space. The apartment is ideal for a commuter with Paddington just 25 minutes away and central Reading on its doorstep. Available 1st July 2025. Furnished.

AT A GLANCE

- Located in Reading town centre
- Overlooking the River Thames
- Two double bedrooms
- Two bathrooms
- Council tax band D
- Gated allocated parking space
- Available 1st July
- Furnished







Approximate total area⁽¹⁾

566.87 ft²
52.66 m²

Reduced headroom

1.30 ft²
0.12 m²

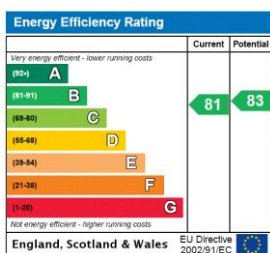
(1) Excluding balconies and terraces

Reduced headroom
(below 1.5m/4.92ft)

While every attempt has been made to ensure accuracy, all measurements are approximate, not to scale. This floor plan is for illustrative purposes only.

GIRAFFE 360

This floorplan is for illustration purposes only and is not to scale. The position and size of doors, windows, appliances and other features are approximate.



Deposit: £1,961.54

Holding Deposit: £392.30

Council Tax Band: D

Where no figures are shown, we have been unable to ascertain the information. All figures that are shown were correct at the time of printing.

Reading | 0118 4022 300 | reading@winkworth.co.uk

Winkworth

for every step...

winkworth.co.uk

Winkworth wishes to inform prospective buyers and tenants that these particulars are a guide and act as information only. All our details are given in good faith and believed to be correct at the time of printing but they don't form part of an offer or contract. No Winkworth employee has authority to make or give any representation or warranty in relation to this property. All fixtures and fittings, whether fitted or not are deemed removable by the vendor unless stated otherwise and room sizes are measured between internal wall surfaces, including furnishings.