



FLAT D, MILD MAY ROAD, LONDON, N1  
**£410,000 LEASEHOLD**

## GORGEOUS ONE BEDROOM APARTMENT ON A BEAUTIFUL TREE LINED STREET CLOSE TO NEWINGTON GREEN

Highbury | 0207 989 7000 | [highbury@winkworth.co.uk](mailto:highbury@winkworth.co.uk)

**Winkworth**

*[winkworth.co.uk](http://winkworth.co.uk)*

See things differently





## DESCRIPTION:

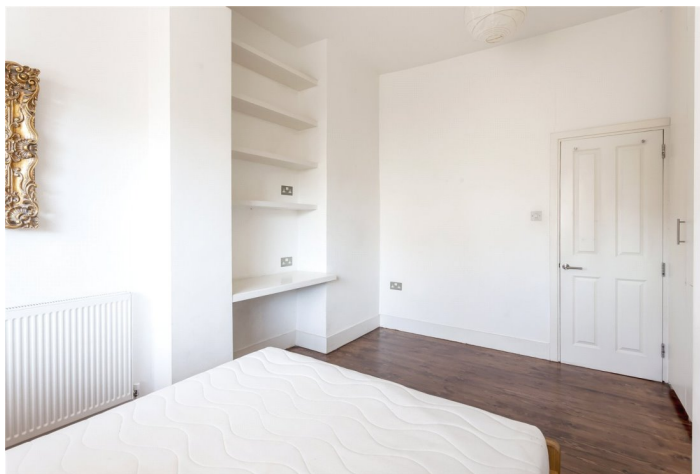
Set within this grand period property is this one beautiful bedroom apartment. Comprised over the raised ground floor, the property combines the perfect blend of period character with contemporary design. To the front of the property you will find a wonderfully generous open plan kitchen and living room with wooden floors throughout, making the perfect entertaining space. To the rear of the property is a peaceful double bedroom with built in storage and a gorgeous outlook to the rear gardens. The well proportioned bathroom has a modern and contemporary feel. The property is presented in immaculate condition and is set on a very peaceful tree lined street.

Mildmay road is perfectly located for local, shops, cafes and restaurants situated nearby on Newington green which is well known for its village atmosphere.

Upper Street is also within walking distance and provides a selection of boutique shops, and bars as well as theatres and a vibrant nightlife. The green spaces of Clissold park are just a short stroll away and transport across London is made easy with over ground links at Canonbury and Essex road providing easy access to the City and East London whilst Highbury and Islington (Victoria line) is the closest tube link.

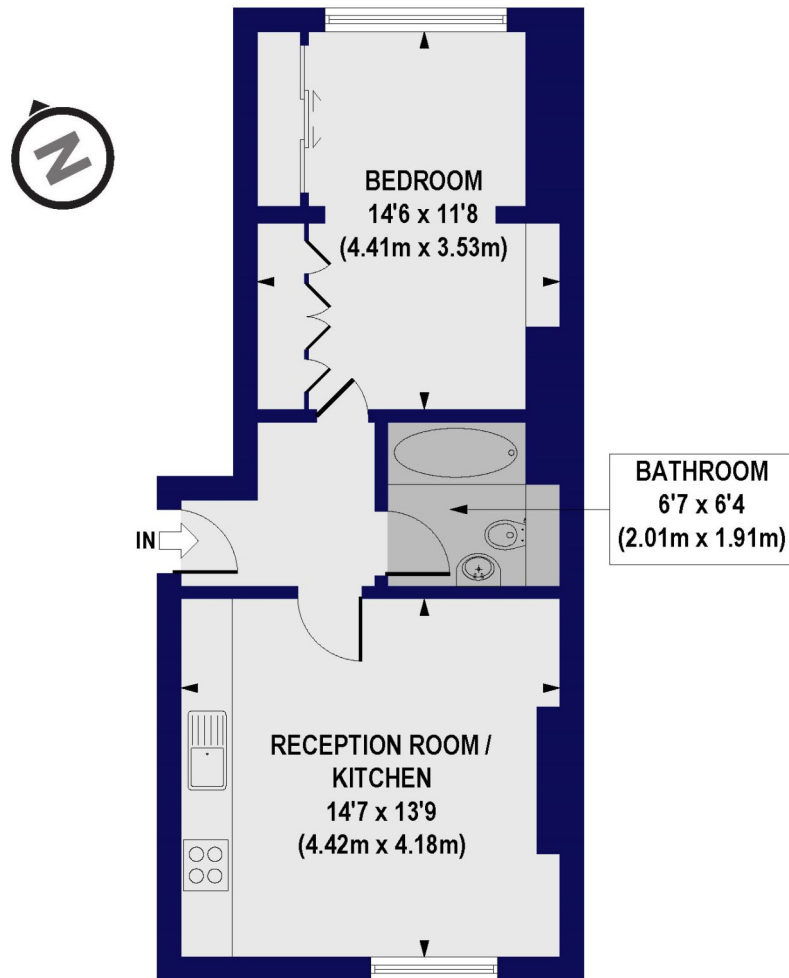
Numerous bus routes are found nearby making access across London easy and Paris is only 2 stops away

**Winkworth**



Winkworth

**Mildmay Road, N1**  
**Approx. Gross Internal Floor Area 452 sq. ft / 41.97 sq. m**

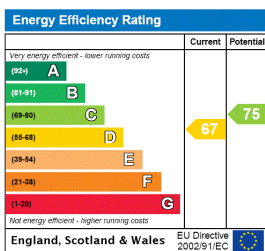


**RAISED GROUND FLOOR**

All measurements of walls, doors, windows, fittings and appliances, including their size and location, are shown as standard sizes and do not constitute any warranty or representation by the seller, their agent or CP Creative. Any intending purchaser must satisfy himself by inspection or otherwise as to the correctness of the information contained in these plans. This plan is for illustrative purposes only and should be used as such by any prospective purchasers.

**Winkworth**

This floorplan is for illustration purposes only and is not to scale. The position and size of doors, windows, appliances and other features are approximate.



Highbury | 0207 989 7000 | highbury@winkworth.co.uk

**Winkworth**

*winkworth.co.uk*

See things differently

Winkworth wishes to inform prospective buyers and tenants that these particulars are a guide and act as information only. All our details are given in good faith and believed to be correct at the time of printing but they don't form part of an offer or contract. No Winkworth employee has authority to make or give any representation or warranty in relation to this property. All fixtures and fittings, whether fitted or not are deemed removable by the vendor unless stated otherwise and room sizes are measured between internal wall surfaces, including furnishings.