



Ashburnham Road, NW10

£625,000 *Leasehold*



A superb first floor, split level, two bedroom Victorian conversion in this great location close to amenities in Kensal Rise.

KEY FEATURES

- CONVERTED LOFT
- TWO DOUBLE BEDROOMS
- CLOSE TO AMENITIES
- EXCELLENT CONDITION
- 977 SQ. FT.
- LONG LEASE



Kensal Rise & Queens Park

0208 960 4947 | kensalrise@winkworth.co.uk

Winkworth

for every step...

Winkworth wishes to inform prospective buyers and tenants that these particulars are a guide and act as information only. All our details are given in good faith and believed to be correct at the time of printing but they don't form part of an offer or contract. No Winkworth employee has authority to make or give any representation or warranty in relation to this property. All fixtures and fittings, whether fitted or not are deemed removable by the vendor unless stated otherwise and room sizes are measured between internal wall surfaces, including furnishings.



DESCRIPTION

This exquisite two-bedroom split-level flat, nestled within a beautiful Victorian period building, offers the perfect blend of timeless character and modern design.

Thoughtfully arranged over two levels, this home exudes elegance and practicality, ideal for those seeking stylish living with a touch of history. At the heart of the property lies a superb 'L'-shaped open-plan living space at the front of the flat.

Flooded with natural light through large sash windows, this versatile area effortlessly combines a spacious lounge, dining area, and a sleek, contemporary kitchen.

The open layout is perfect for entertaining or simply enjoying the serene ambiance of this charming home.

The property features two well-proportioned bedrooms, including a generously sized principal bedroom that provides a peaceful retreat.

The second bedroom offers flexibility, perfect as a guest room, home office, or nursery.





LOCATION

Ashburnham Road is a charming residential street located in the heart of Kensal Rise, London NW10. The area is known for its vibrant community, excellent transport links, and a variety of local amenities, making it a desirable place to live. Residents benefit from superb connectivity. Kensal Green Underground Station, approximately 0.2 miles away, is on the Bakerloo Line, offering direct access to central London destinations such as Oxford Circus, Piccadilly, and Waterloo.

Additionally, Kensal Rise Overground Station, also about 0.2 miles away, provides convenient links to Euston, Richmond, Hackney, and other key locations across the city. For families, the area boasts several reputable schools. Princess Frederica CofE Primary School, located just 0.1 miles from Ashburnham Road, is rated "Good" and is known for its strong community ethos and high academic standards. Ark Franklin Primary Academy, approximately 0.2 miles away, also provides quality education and is similarly well-regarded.

For more information, scan the QR code or visit the link below



<https://www.winkworth.co.uk/sale/property/KQP210056>

Where no figures are shown, we have been unable to ascertain the information. All figures that are shown were correct at the time of printing.

MATERIAL INFO

Tenure: Leasehold

Term: 163 year and 7 months

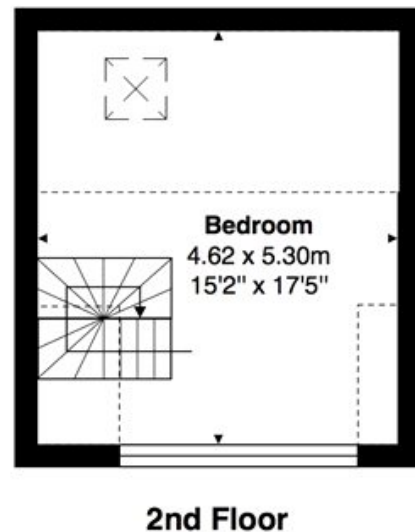
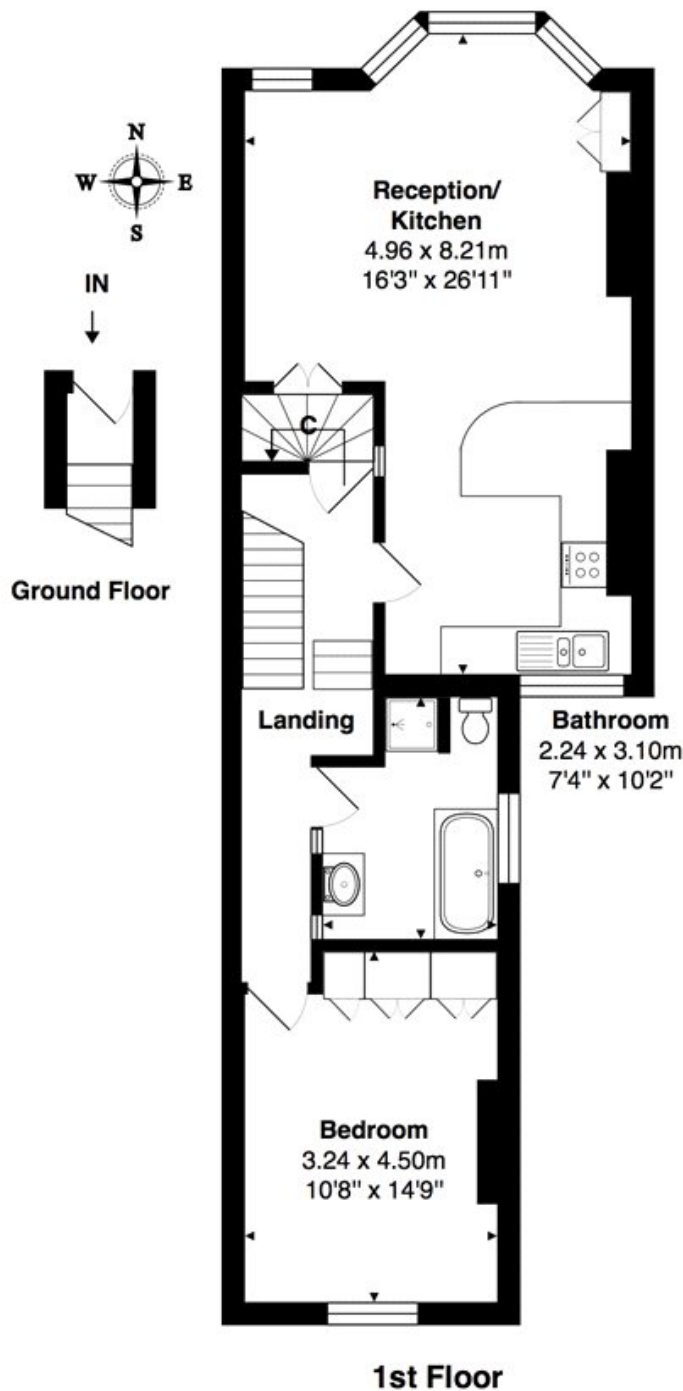
Service Charge: Ask Agent

Ground Rent: Ask Agent

Council Tax Band: C

EPC rating: E

Energy Efficiency Rating		
	Current	Potential
Very energy efficient - lower running costs		
(92+) A		
(81-91) B		
(69-80) C		
(55-68) D		
(39-54) E	52	62
(21-38) F		
(1-20) G		
Not energy efficient - higher running costs		
England, Scotland & Wales EU Directive 2002/91/EC		



Total Area: 90.8 m² ... 977 ft²
 All measurements are approximate and for display purposes only

Kensal Rise & Queens Park

0208 960 4947 | kensalrise@winkworth.co.uk

Winkworth

for every step...

Winkworth wishes to inform prospective buyers and tenants that these particulars are a guide and act as information only. All our details are given in good faith and believed to be correct at the time of printing but they don't form part of an offer or contract. No Winkworth employee has authority to make or give any representation or warranty in relation to this property. All fixtures and fittings, whether fitted or not are deemed removable by the vendor unless stated otherwise and room sizes are measured between internal wall surfaces, including furnishings.