



Portobello Road, W11

£1,500 per week (£6,500 PCM) *Unfurnished*



A rare opportunity to rent one of these highly sought after 2 double bedrooms 1-bathroom maisonette with own front door & 2 fabulous west facing roof terraces

#### KEY FEATURES

- 2 Bedrooms
- 1 Reception Room
- 1 Bathroom
- Maisonette
- Roof Terrace
- 1302 Sq Ft



Notting Hill Lettings

0207 727 3227 | [nottinghill@winkworth.co.uk](mailto:nottinghill@winkworth.co.uk)

**Winkworth**

for every step...

\*Tenant fees may apply. Details of tenant fees are available on the Winkworth website and the link can be found with the displayed rent for the property. Tenants should ensure they are fully conversant with any fees before making an offer to rent and your local Winkworth office can provide written details upon request.





## DESCRIPTION

A rare opportunity to rent one of these highly sought after 2 double bedroom, 2 living room, maisonette with its own front door and 2 fabulous west facing roof terraces interlinked by a spiral staircase. Located in the heart of Notting Hill and the ever vibrant Portobello Road the property benefits from its own front door at street level, separate guest WC, fantastic lateral living space split across the first floor of the building, with large fully fitted eat in kitchen/dining room leading out to the west terrace behind, second living room with wood floors, stairs then lead up to the top floor consisting of spacious master bedroom with built in storage and second double bedroom with French doors out to the west facing terrace and large family bathroom. Viewings highly recommended.

Portobello Road runs north south right through the centre of Notting Hill. As well as the world-famous market, it boasts a large proportion of Notting Hill's best bars and restaurants and really is at the heart of the action. The apartment is well looking up Lonsdale Road, within easy walking distance of the many transport links of Notting Hill Gate.

### Utilities:

Electricity – Mains

Water – Mains

Sewerage – Mains

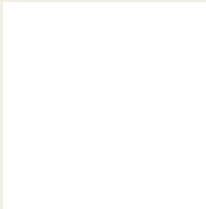
Heating – Gas

Broadband <https://checker.ofcom.org.uk/en-gb/broadband-coverage>

Mobile Coverage <https://checker.ofcom.org.uk/en-gb/mobile-coverage>



For more information, scan the QR code or visit the link below

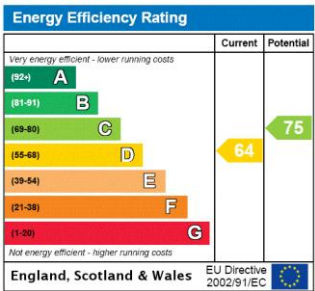


<https://www.winkworth.co.uk/rent/property/NHL130050>

Where no figures are shown, we have been unable to ascertain the information. All figures that are shown were correct at the time of printing.

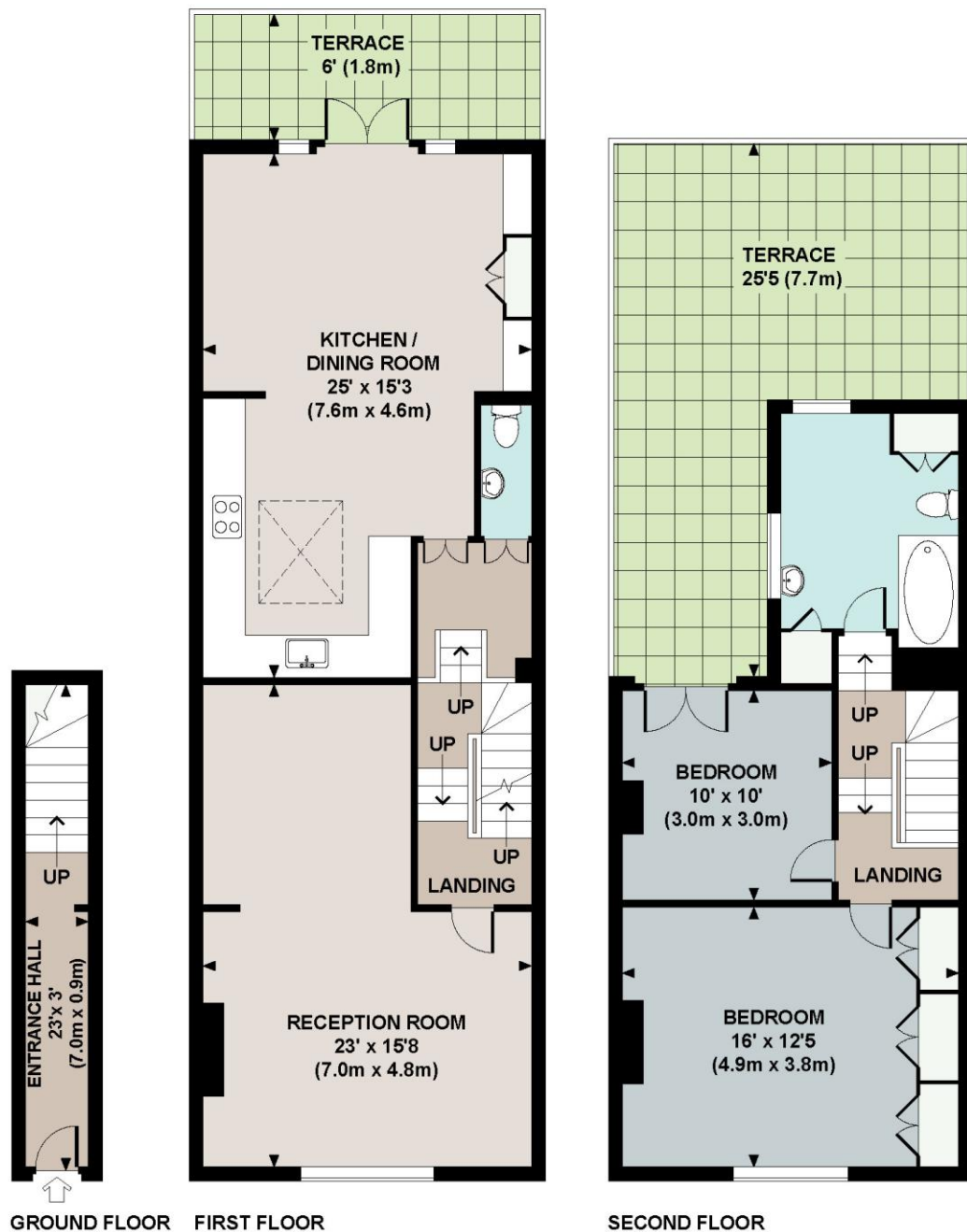
MATERIAL INFO

Deposit: £9,000  
Holding Deposit: £1,500  
Council Tax Band: F (RBKC)



# PORTOBELLO ROAD, W11

Approx. gross internal area  
1302 Sq.Ft. / 121.0 Sq.M.



All measurements are approximate and for illustration purposes only as defined by the RICS' Code of Measuring Practice © 2013  
Dowling Jones Design www.dowlingjones.com 020 7610 9933

Notting Hill Lettings

0207 727 3227 | nottinghill@winkworth.co.uk

**Winkworth**

for every step...

Winkworth wishes to inform prospective buyers and tenants that these particulars are a guide and act as information only. All our details are given in good faith and believed to be correct at the time of printing but they don't form part of an offer or contract. No Winkworth employee has authority to make or give any representation or warranty in relation to this property. All fixtures and fittings, whether fitted or not are deemed removable by the vendor unless stated otherwise and room sizes are measured between internal wall surfaces, including furnishings.