



27 HAREWOOD
GARDENS
BOURNEMOUTH
BH7 7RH

FREEHOLD
GUIDE PRICE
£575,000 - £600,000

“A spacious, three
double bedroom, two
bathroom, detached
bungalow set on a
secluded plot with off
road parking and
garage”

Winkworth

for every step...

GUIDE PRICE £575,000 - £600,000

Three Double Bedrooms
Two Bathrooms
Off Road Parking For Three Vehicles
Sought After Location
Secluded Rear Garden
New Kitchen
New Bathrooms
Wrap Around Garden

EPC: D | COUNCIL TAX: E | FREEHOLD
01202 434365
southbourne@winkworth.co.uk





Why Harewood Gardens?

Harewood Gardens enjoys a peaceful cul-de-sac location ideally located in the heart of Boscombe East / Littledown. Boscombe East enjoys leafy tree lined avenues with most of the properties built circa 1930. By contrast, Littledown is a more modern development built circa mid 80s. It is conveniently located just a short distance to Southbourne, the Royal Bournemouth Hospital, JP Morgan, and the Littledown centre with its indoor pool, gym, football pitches and plenty of after school activities such as gymnastics. There is a play park for the little ones, a lake and picnic areas. It also has a good primary and secondary schools making this a very family friendly area.

This three bedroom detached bungalow has undergone some interior renovations by the current owner to include new kitch-

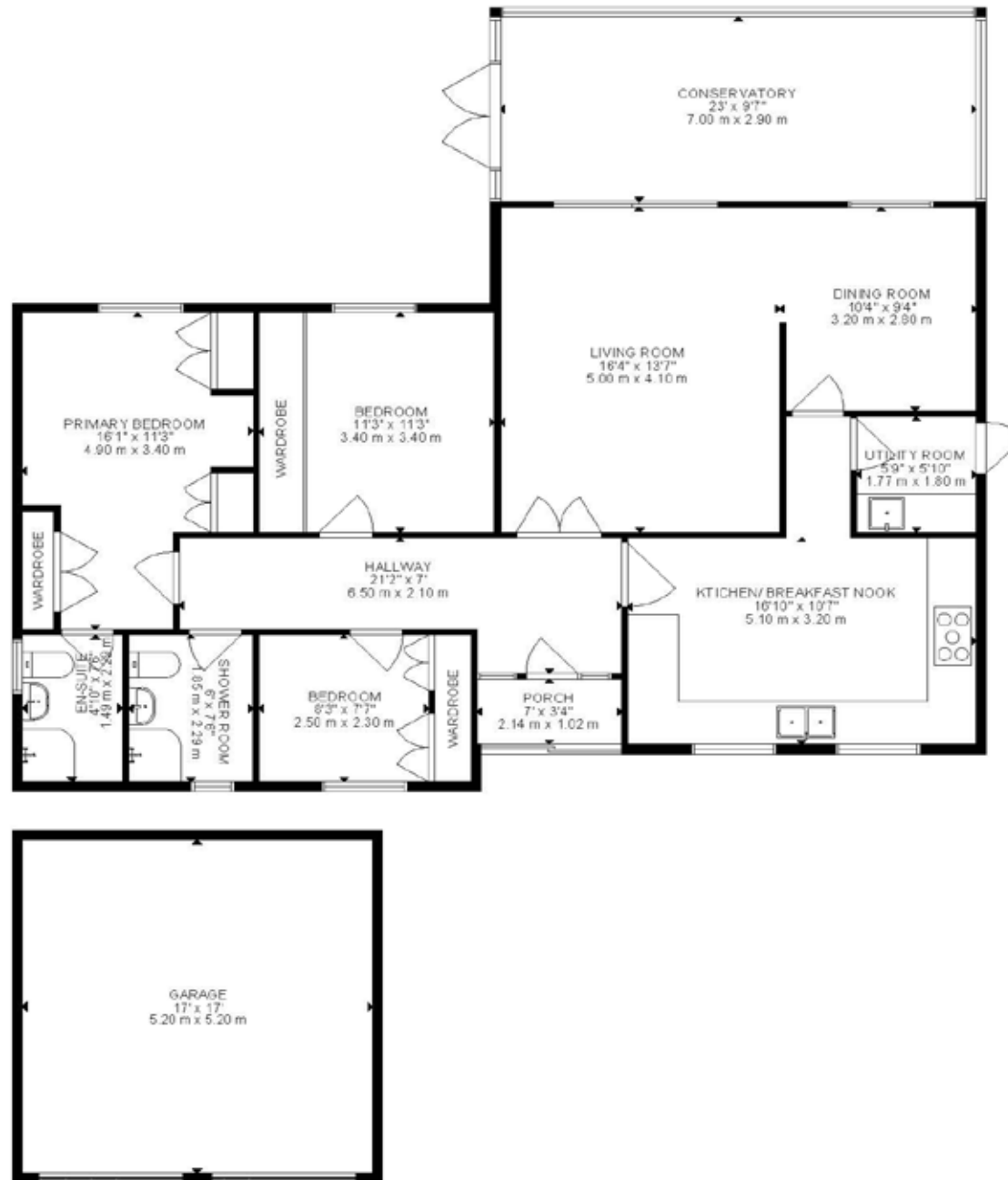
en, bathrooms, double glazing, high pressure water cylinder, boiler and conservatory.

The kitchen / breakfast room includes a range of modern fitted cabinets, a five ring Cuisine master, range style cooker with over head extractor, integrated appliance with counter tops and flooring to complement. The spacious open plan lounge / dining room is flooded with natural light with double doors leading out to the large conservatory.

All three bedrooms are double in size with bedroom one enjoying a range of fitted furniture and a newly refitted en suite shower room. The family bathroom has also been refitted to include a quadrant shower, wash hand basin and wc.

The garden is adorned with mature shrubs offering a good degree of seclusion with the remainder laid to lawn.





GROSS INTERNAL AREA
 TOTAL: 1659 SQ FT, 154 m²
 SIZE AND DIMENSIONS ARE APPROXIMATE, ACTUAL MAY VARY



Lori Leon

lleon@winkworth.co.uk
07918 932490
Winkworth Southbourne
29 Southbourne Grove,
Bournemouth, Dorset, BH6
3QT

01202 434365
southbourne@winkworth.co.uk
winkworth.co.uk/southbourne

“Before embarking on her career in agency, Lori was a golf professional for many years following a successful amateur career playing at both county and international level. She started in agency in 2004 and has always worked in Bournemouth and the surrounding areas.

While working at her previous agency, she met James where they forged a firm friendship. Their passion to change the way people perceive estate agents, led them to joining forces and purchasing the Winkworth Southbourne franchise together. Lori has always lived in Southbourne and is very passionate about the area. Her children Zak and Kitty attended the local St James primary school. Both her children are now adults so in her spare time she enjoys travelling and big family get togethers when her youngest is home from university.”

Winkworth

for every step...