



## Eccleston Square, SW1V

£2,500 PER MONTH

FURNISHED

### AT A GLANCE

- One Double Bedroom
- Large Reception Room
- Fitted Kitchen
- Prime Location
- Furnished
- Council Tax Band E

**Winkworth**

for every step...



Score	Energy rating	Current	Potential
92+	A		
81-91	B		
69-80	C		79 C
55-68	D	64 D	
39-54	E		
21-38	F		
1-20	G		

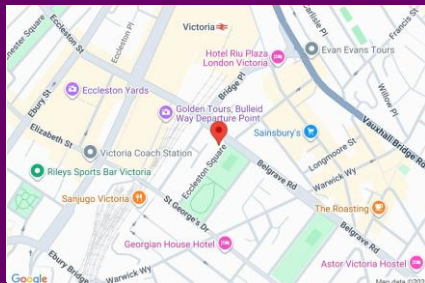
## ECCLESTON SQUARE, SW1V

£2,500 PER MONTH

FURNISHED

A lovely one double bedroom flat located on the second floor of a beautiful period building in the prestigious Eccleston Square. The property comprises a bright and airy reception room including dining space, modern fitted kitchen with dishwasher and washing machine, double bedroom with built in storage and family bathroom. All windows are double glazed providing good sound insulation. The property comes with access to the lovely prize-winning private gardens including a tennis court and barbecue facilities.

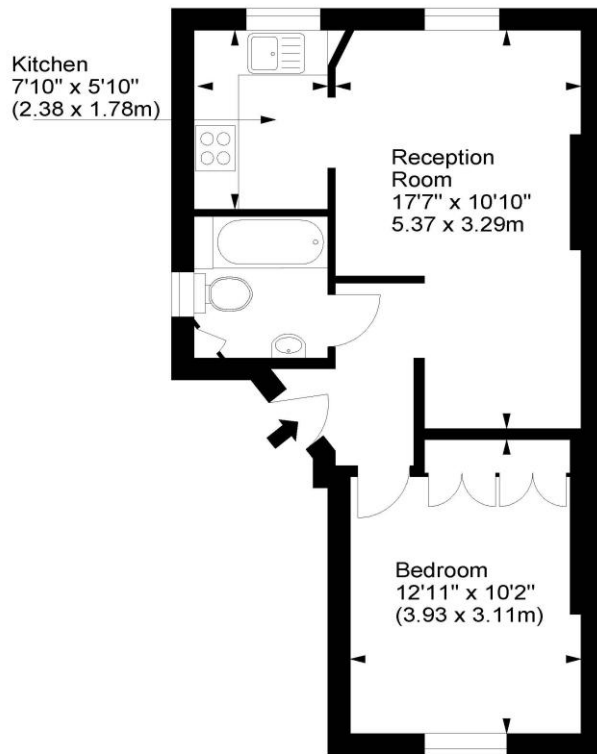
Eccleston Square is moments away from the restaurants, transport and shopping facilities at Victoria Station.



winkworth wishes to inform prospective buyers and tenants that these particulars are a guide and act as information only. All our details are given in good faith and believed to be correct at the time of printing but they don't form part of an offer or contract. No winkworth employee has authority to make or give any representation or warranty in relation to this property. All fixtures and fittings, whether fitted or not are deemed removable by the vendor unless stated otherwise and room sizes are measured between internal wall surfaces, including fireplaces.

## Eccleston Square, SW1

Approx. Gross Internal Area  
424 Sq Ft - 39.39 Sq M



Second Floor

For illustration purposes only. Not to scale.  
All measurements are taken and shown at floor level.  
www.r3photography.co.uk © Photography / Floor Plans / Lease Plans / EPCs



Pimlico & Westminster | 020 7828 1786 |  
pimlico@winkworth.co.uk

winkworth.co.uk/pimlico

**Winkworth**

for every step...