



PROSPECT QUAY, LONDON, SW18
£1,975 PER MONTH UNFURNISHED

A one double bedroom apartment situated on the upper floor of this prestigious riverside development

Putney | 020 8877 1000 | putney@winkworth.co.uk

Winkworth

for every step...

winkworth.co.uk



DESCRIPTION:

A very well presented one bedroom flat located on the raised ground floor of this prestigious development.

The property boasts a good size open planned reception room, with a custom-built kitchen and double doors leading on to the terrace area.

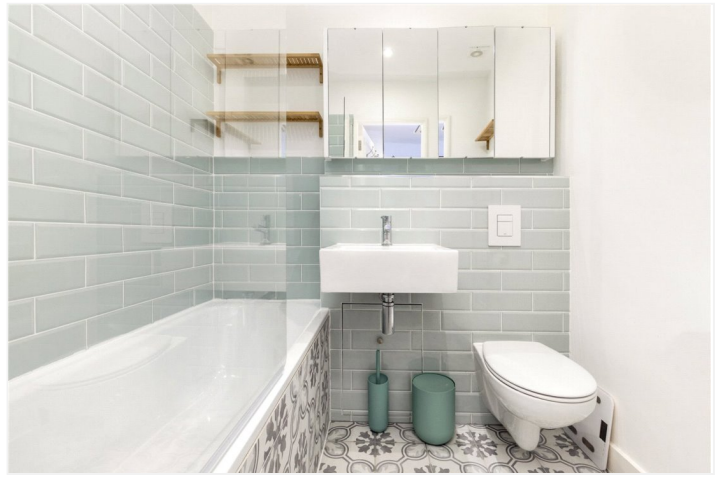
The bedroom is bright and airy with plenty of fitted wardrobes. The flat is complemented by a luxury bathroom.

Lighterman's Walk forms part of Prospect Quay and benefits from secure parking, a communal swimming pool, gym, and concierge.

Within a 30 second walk there is the Thames Clipper Service which has swift access to Central London. Also, within a 10-minute walk is Wandsworth Mainline Station and East Putney Underground.

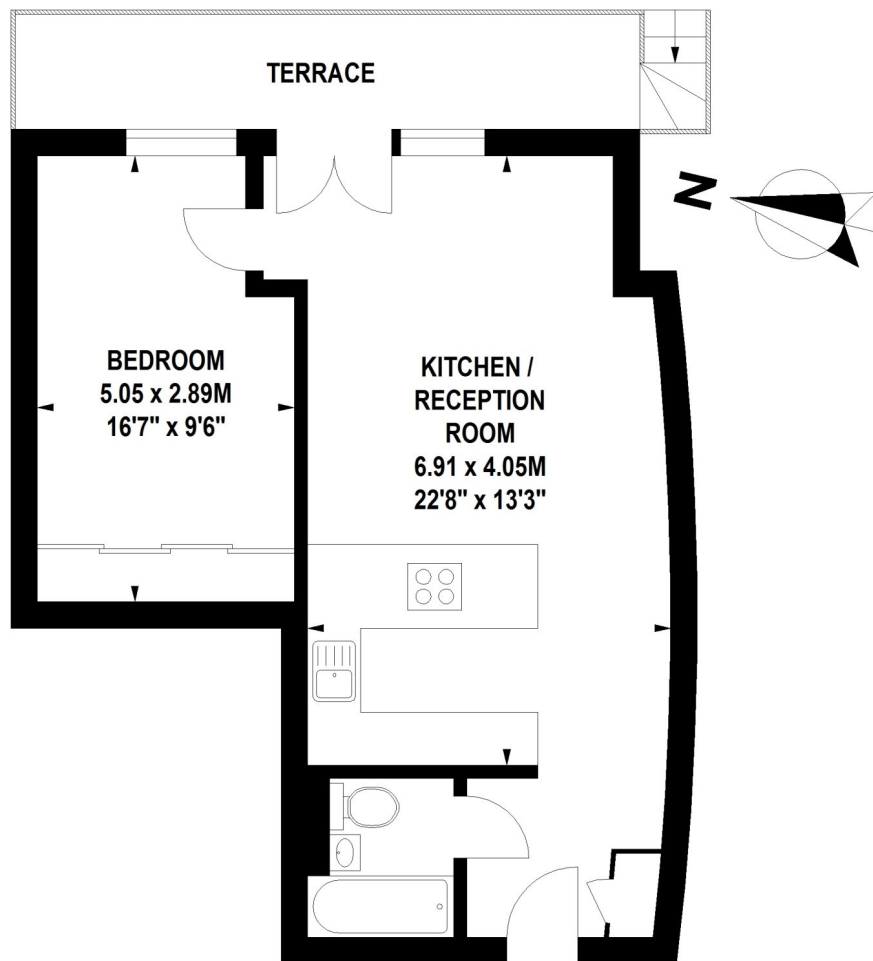
ACCOMMODATION

Long Let, 1 Bedrooms, 1 Reception Rooms, 1 Bathrooms, Flat/Apartment, Balcony, Communal Gardens, Off Street Parking, Porter/Concierge, Unfurnished, 538 Approx Sq Ft



Prospect Quay, SW18

Approximate Gross Internal Area 50 sq.m / 538 sq. ft



Raised Ground Floor

Winkworth

020 8788 9295

Floor Plan produced by Mays Floorplans©

Illustration for identification purposes only, not to scale

All measurements are maximum, and include wardrobes and window bays where applicable

This floorplan is for illustration purposes only and is not to scale. The position and size of doors, windows, appliances and other features are approximate.

Energy Efficiency Rating		Current	Potential
Very energy efficient - lower running costs			
(92)	A		
(81-91)	B		
(69-80)	C	77	77
(55-68)	D		
(39-54)	E		
(21-38)	F		
(1-20)	G		
Not energy efficient - higher running costs			
England, Scotland & Wales		EU Directive 2002/91/EC	

Putney | 020 8877 1000 | putney@winkworth.co.uk

Winkworth

for every step...

winkworth.co.uk

Winkworth wishes to inform prospective buyers and tenants that these particulars are a guide and act as information only. All our details are given in good faith and believed to be correct at the time of printing but they don't form part of an offer or contract. No Winkworth employee has authority to make or give any representation or warranty in relation to this property. All fixtures and fittings, whether fitted or not are deemed removable by the vendor unless stated otherwise and room sizes are measured between internal wall surfaces, including furnishings.