



Winkworth

for every step...

## Hayward, Reading, Berkshire, RG1

£1,295 per month *Furnished*



Second floor furnished apartment situated in the Chatham Place development in the heart of the town centre, a short walk to the railway station and The Oracle shopping complex. The property comprises of a 21ft reception room/kitchen with fully integrated appliances, a double bedroom with built in wardrobe, Villeroy and Boch bathroom suite and storage cupboard. Further benefits include a private balcony, video entry system, gas radiator central heating, well-maintained communal gardens, on-site concierge service and lift access. (No parking) Available 12th December 2025. Furnished.

### KEY FEATURES

- Modern second floor apartment
- One bedroom
- Council tax band C
- No parking
- Private balcony
- Available 12th December
- Furnished



Reading

0118 4022 300 | [reading@winkworth.co.uk](mailto:reading@winkworth.co.uk)

Winkworth

for every step...



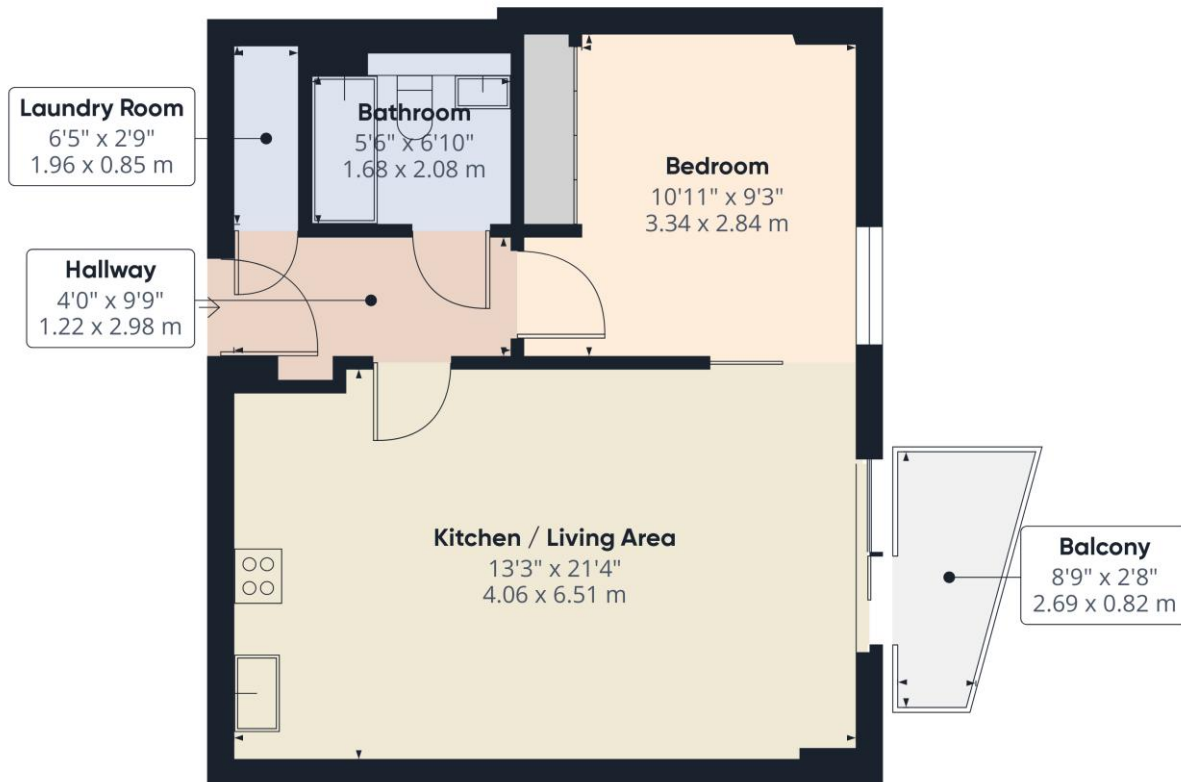


**Deposit:** £1,494.23  
**Holding Deposit:** £298.84  
**Council Tax Band:** C







**Approximate total area<sup>(1)</sup>**

508.39 ft<sup>2</sup>  
47.23 m<sup>2</sup>

**Balconies and terraces**

31.97 ft<sup>2</sup>  
2.97 m<sup>2</sup>

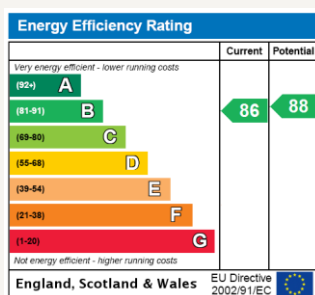
(1) Excluding balconies and terraces

While every attempt has been made to ensure accuracy, all measurements are approximate, not to scale. This floor plan is for illustrative purposes only.

Calculations are based on RICS IPMS 3C standard.

GIRAFFE360

For more information, scan the QR code or visit the link below



<https://www.winkworth.co.uk/rent/property/REA150332>

Where no figures are shown, we have been unable to ascertain the information. All figures that are shown were correct at the time of printing.

## Reading

0118 4022 300 | [reading@winkworth.co.uk](mailto:reading@winkworth.co.uk)

**Winkworth**

for every step...

Winkworth wishes to inform prospective buyers and tenants that these particulars are a guide and act as information only. All our details are given in good faith and believed to be correct at the time of printing but they don't form part of an offer or contract. No Winkworth employee has authority to make or give any representation or warranty in relation to this property. All fixtures and fittings, whether fitted or not are deemed removable by the vendor unless stated otherwise and room sizes are measured between internal wall surfaces, including furnishings.