



ARUNDEL DRIVE, HERTFORDSHIRE, WD6
£330,000 LEASEHOLD

**A WELL PRESENTED TWO DOUBLE BEDROOM,
TWO BATHROOM GROUND FLOOR FLAT WITH
ALLOCATED PARKING**

Borehamwood | 020 8953 8899 | borehamwood@winkworth.co.uk



DESCRIPTION:

Offered for sale chain free is this purpose built, two double bedroom, two bathroom ground floor apartment Situated on the highly desirable South side of Borehamwood.

With well-proportioned accommodation totalling in excess of 700 square feet and an allocated parking space to rear the property would be ideal for buy to let investors, downsizers and first time buyers alike.

AT A GLANCE

- Two Double Bedrooms
- Two Bathrooms
- Chain Free
- South Borehamwood
- Allocated Parking Space
- 712 Square Feet
- Double Glazed





Winkworth



Winkworth



Winkworth



Winkworth



Winkworth

Approximate Gross Internal Area
66.2 sq m / 712 sq ft

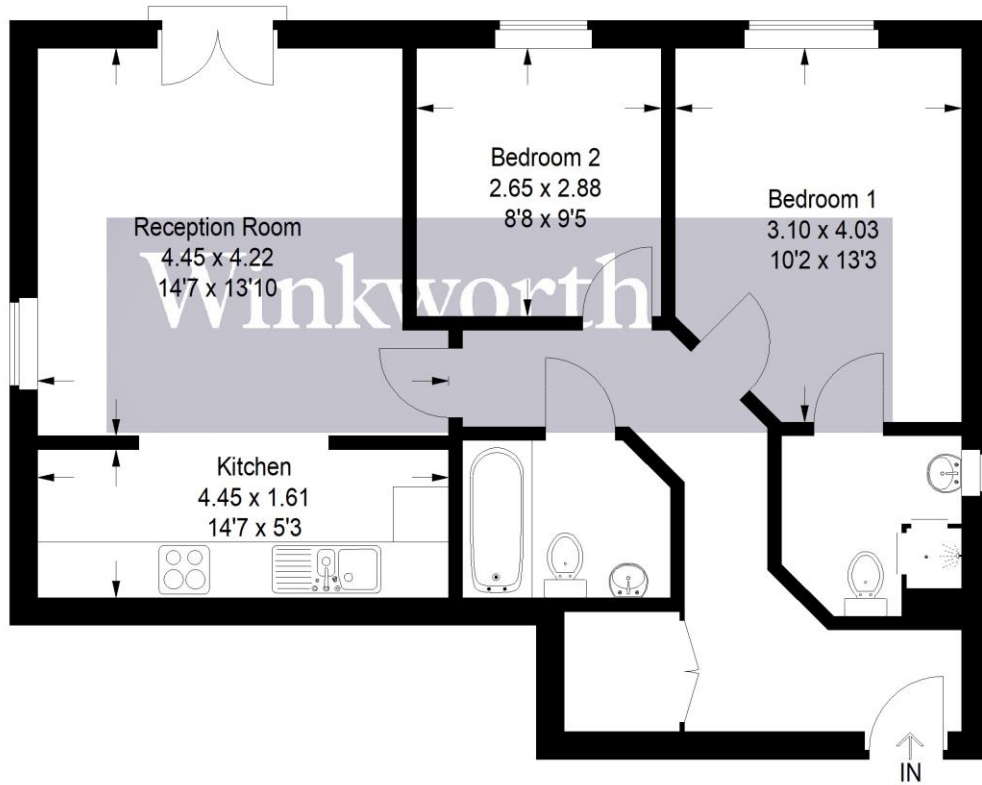
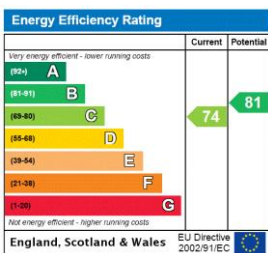


Illustration for identification purposes only, measurements are approximate, not to scale. Winkworth © 2022 (ID 827496)

This floorplan is for illustration purposes only and is not to scale. The position and size of doors, windows, appliances and other features are approximate.



Tenure: Leasehold

Term: 85 year and 3 months

Service Charge: £1461 per annum

Ground Rent: £ 350 Annually (subject to increase)

Council Tax Band: D

Where no figures are shown, we have been unable to ascertain the information. All figures that are shown were correct at the time of printing.