



PLOT 107, BOURNE, PE10 2AQ
£252,995 FREEHOLD

Winkworth



PLOT 107, BOURNE, PE10

Close to public open space - PLOT 107 THE ELLERTON AT BOURNE - This bright and practical home is ideal for modern family living. The large open-plan kitchen with ample dining space has French doors leading out to the garden. The home also features a spacious lounge for all of the family to relax in. Upstairs the main bedroom has an en suite shower room and there is a further double bedroom, a single bedroom and a family bathroom.

This home includes a range of energy-efficient features including solar PV panels and more.

1

Bathroom - 1700mm x 1917mm (5'6" x 6'3")

Bedroom 1 - 3601mm x 3674mm (11'9" x 12'0")

Bedroom 2 - 2694mm x 3236mm (8'10" x 10'7")

Bedroom 3 - 2128mm x 2918mm (6'11" x 9'6")

Ensuite 1 - 1928mm x 1707mm (6'3" x 5'7")

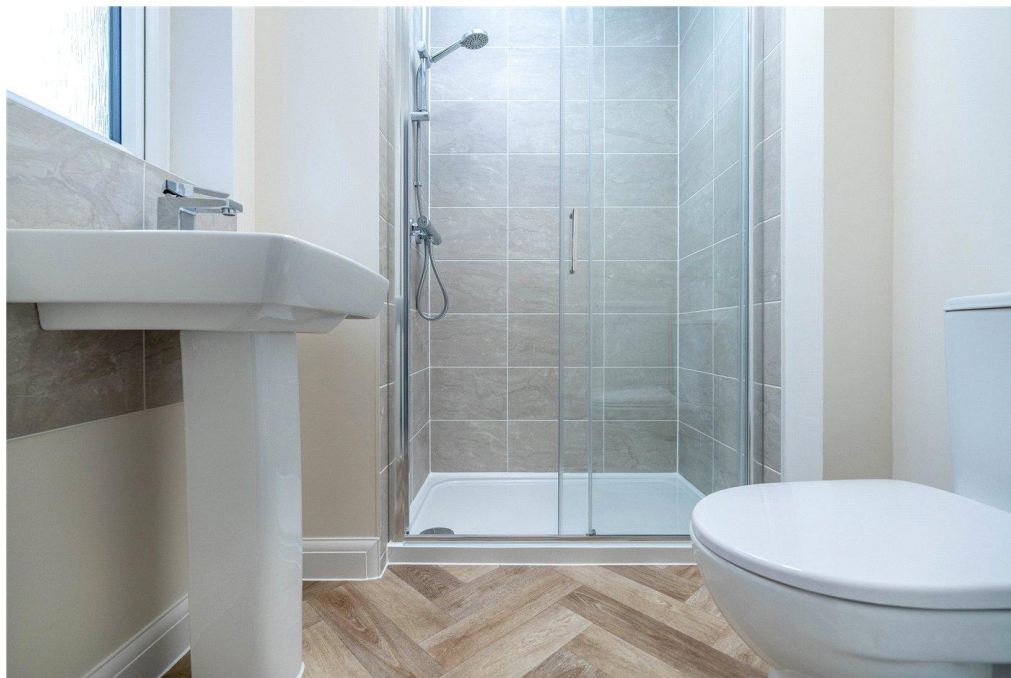
G

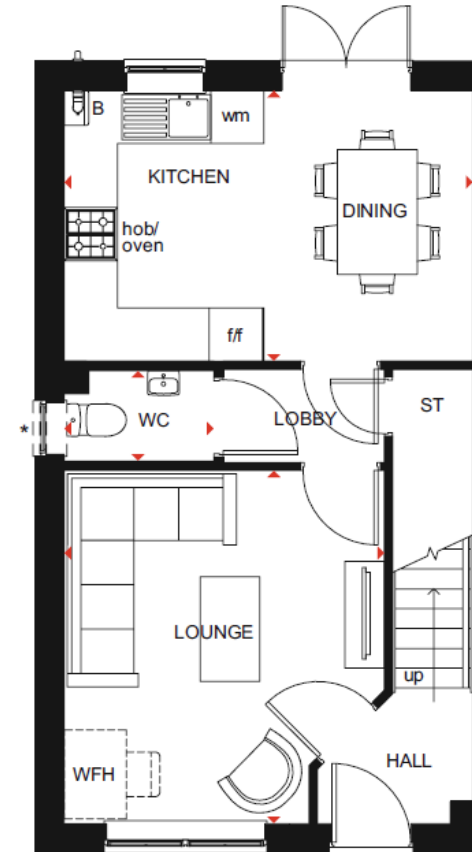
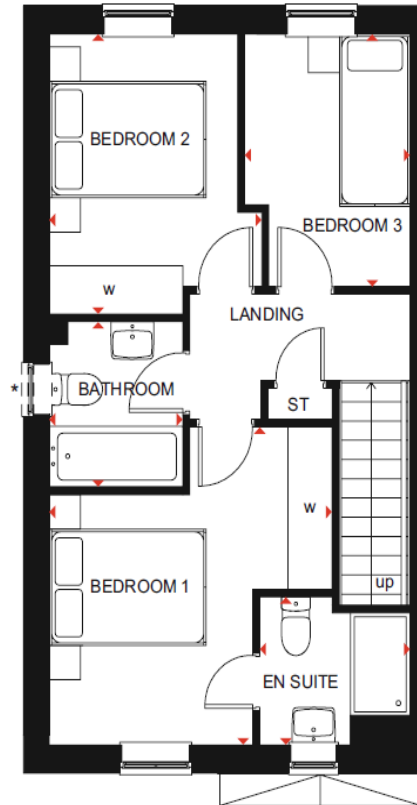
Kitchen / Dining - 4552mm x 3048mm (14'11" x 9'12")

Lounge - 3599mm x 3904mm (11'9" x 12'9")

WC - 1663mm x 1016mm (5'5" x 3'4")







Bourne | 01778392807 | bourne@winkworth.co.uk

[winkworth.co.uk](https://www.winkworth.co.uk)

Winkworth wishes to inform prospective buyers and tenants that these particulars are a guide and act as information only. All our details are given in good faith and believed to be correct at the time of printing but they don't form part of an offer or contract. No Winkworth employee has authority to make or give any representation or warranty in relation to this property. All fixtures and fittings, whether fitted or not are deemed removable by the vendor unless stated otherwise and room sizes are measured between internal wall surfaces, including furnishings.

Winkworth