



AMESBURY AVENUE, SW2
£1,650 PER MONTH FURNISHED, PART FURNISHED

A ONE BEDROOM VICTORIAN GARDEN APARTMENT IN THE LEIGHAM HALL CONSERVATION AREA CLOSE TO STREATHAM HILL STATION

Streatham | 020 8769 6699 | streatham@winkworth.co.uk

Winkworth

for every step...

winkworth.co.uk

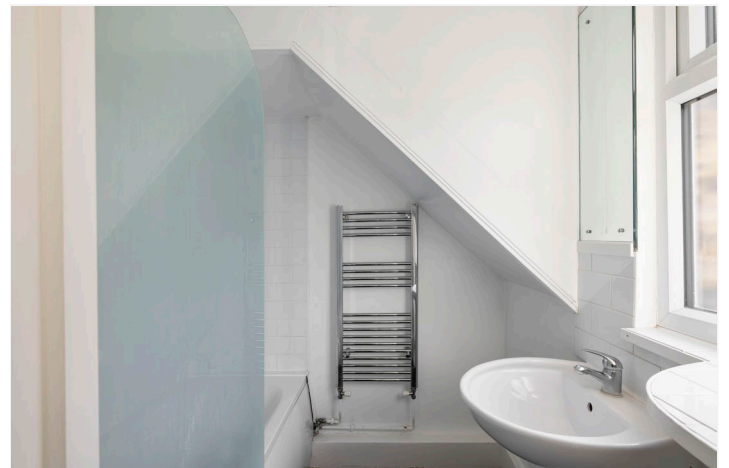


DESCRIPTION:

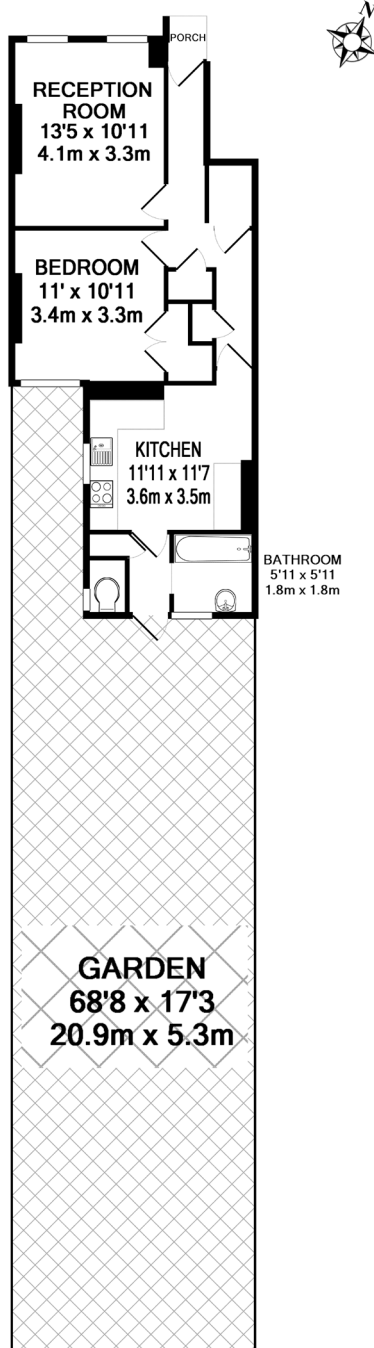
Available exclusively through Winkworth, this spacious ground floor maisonette with its own front door comprises: a good size reception room with wooden floors, high ceilings, sash windows and a fireplace; a large double bedroom with fitted wardrobes; a fitted eat-in kitchen with wooden parquet floor, lots of storage space and includes a washing machine; a white bathroom and a handy storage closet in the hallway. There is a large west-facing private garden to the rear - perfect for outdoor dining and the property is located close to the transport and amenities of Streatham Hill with all its lively bars, restaurants, cafes and shops. Central London can easily be reached from Streatham Hill station and Brixton tube is a short bus ride away. The property is available from the 30th of January 2024 and is offered on a furnished/part furnished basis.

AT A GLANCE

- Sought-After Location Close to Streatham Hill
- Large Double Bedroom with Fitted Wardrobes.
- Reception Room
- Eat-In Kitchen
- Bathroom
- Private Garden
- Furnished/Part Furnished
- Available 30th January 2024
- Lambeth Council Tax Band: C



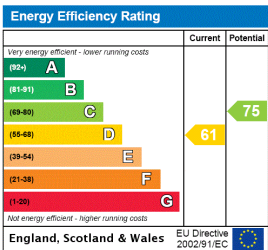




TOTAL APPROX. FLOOR AREA 571 SQ.FT. (53.0 SQ.M.)

Whilst every attempt has been made to ensure the accuracy of the floor plan contained here, measurements of doors, windows, rooms and any other items are approximate and no responsibility is taken for any error, omission, or mis-statement. This plan is for illustrative purposes only and should be used as such by any prospective purchaser. The services, systems and appliances shown have not been tested and no guarantee as to their operability or efficiency can be given
Made with Metropix ©2012

This floorplan is for illustration purposes only and is not to scale. The position and size of doors, windows, appliances and other features are approximate.



Streatham | 020 8769 6699 | streatham@winkworth.co.uk



for every step...

winkworth.co.uk

Winkworth wishes to inform prospective buyers and tenants that these particulars are a guide and act as information only. All our details are given in good faith and believed to be correct at the time of printing but they don't form part of an offer or contract. No Winkworth employee has authority to make or give any representation or warranty in relation to this property. All fixtures and fittings, whether fitted or not are deemed removable by the vendor unless stated otherwise and room sizes are measured between internal wall surfaces, including furnishings.