



## ELGIN CRESCENT, W11

**£795 PER WEEK (£3,445 PCM) Furnished**

**A LOVELY TWO BEDROOM GARDEN FLAT WITH DIRECT ACCESS TO THE BEAUTIFUL COMMUNAL GARDENS BEHIND.**

Short Let, 2 Bedrooms, 1 Reception Room, 1 Bathroom, Flat/Apartment, Garden, Communal Gardens, Furnished, 801 Approx Sq Ft

**Winkworth**





## DESCRIPTION:

A lovely two bedroom flat in the heart of Notting Hill comprising two bedrooms, one bathroom and a large semi open plan kitchen and pretty living room that opens out onto the private garden. The property has the added and unusual benefit of direct access via the garden to the beautiful communal gardens behind (costs may apply). Available furnished for 6 weeks from mid-April to Early June.

## LOCATION:

Elgin Crescent is an imposing residential street, perfectly located at the heart of Notting Hill running west from Portobello Road. The property is located on the stretch between Portobello market and Ladbroke Grove, seconds from the many shops bars and restaurants of Portobello Road and within easy walking distance of Notting Hill Gate and its many transport links.

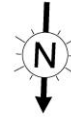
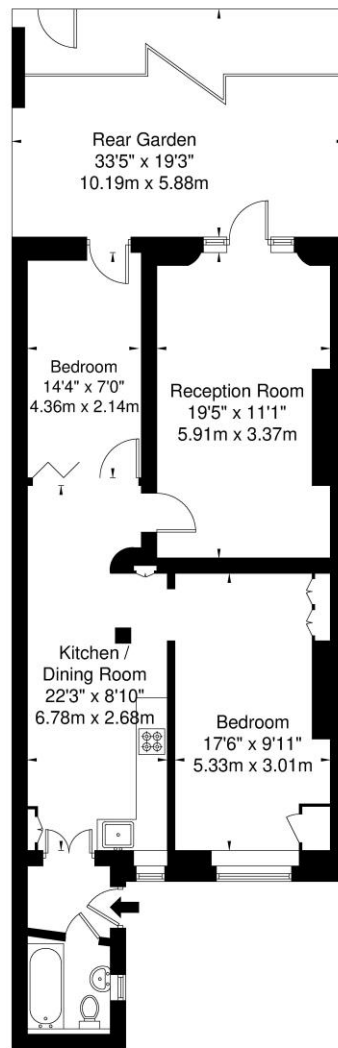
## LOCAL AUTHORITY AND COUNCIL TAX BAND:

Royal Borough of Kensington and Chelsea (Band E)



# Elgin Crescent, W11 2JD

Approx. Gross Internal Area = 74.5 sq m / 801 sq ft



Ref

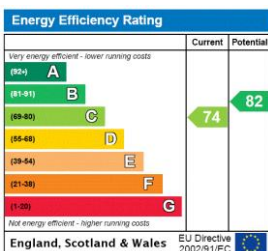
Copyright

**B L E U  
P L A N**

The Floor plan is not to scale and measurements and areas shown are approximate and therefore should be used for illustrative purposes only. The plan has been prepared in accordance with the RICS code of Measuring Practice and whilst we have confidence in the information produced it must not be relied on. If there is any aspect of particular importance, you should carry out or commission your own inspection of the property.

Copyright @ BLEUPLAN

This floorplan is for illustration purposes only and is not to scale. The position and size of doors, windows, appliances and other features are approximate.



Notting Hill | 0207 727 3227 | [nottinghill@winkworth.co.uk](mailto:nottinghill@winkworth.co.uk)

**Winkworth**

[winkworth.co.uk](http://winkworth.co.uk)

for every step...

winkworth wishes to inform prospective buyers and tenants that these particulars are a guide and act as information only. All our details are given in good faith and believed to be correct at the time of printing but they don't form part of an offer or contract. No winkworth employee has authority to make or give any representation or warranty in relation to this property. All fixtures and fittings, whether fitted or not are deemed removable by the vendor unless stated otherwise and room sizes are measured between internal wall surfaces, including furnishings.