



Castledine Road, SE20

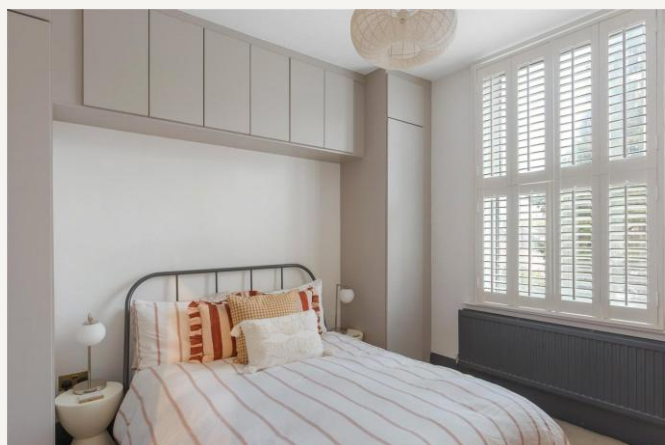
£350,000 *Leasehold*



Recently decorated throughout and move-in ready, Winkworth is pleased to offer to the market this gorgeous one-bedroom flat to the market moments from Crystal Palace Park.

KEY FEATURES

- Recently decorated throughout - move in ready!
- Hammonds built in wardrobes in the bedroom
- Great storage options
- Plantation shutters and high-end fittings and fixtures
- Retained period features - high ceilings, skirting and fire place
- Moments from Crystal Palace Park



Crystal Palace

02038693222 | crystalpalace@winkworth.co.uk

Winkworth

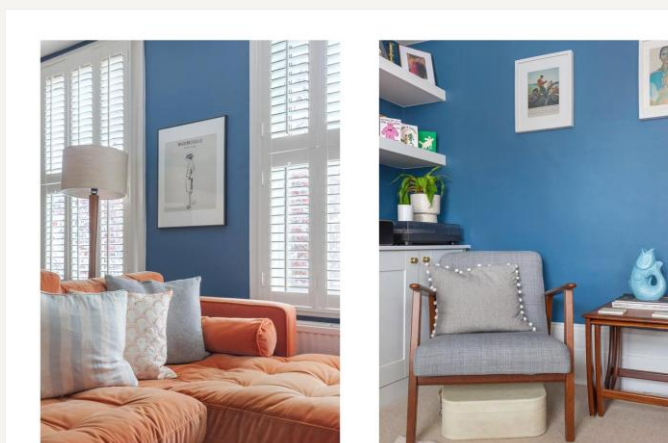
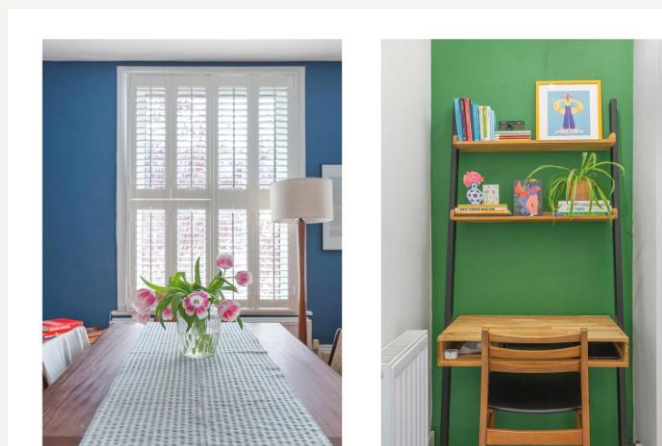
for every step...



The property comprises; a large double-bedroom with Hammonds built in wardrobes, fully utilising the space and providing a lot of storage (still within warranty). A spacious reception room with bespoke built-in cupboards and shelves featuring a gas-working fire. The property benefits from shutters throughout offering lots of privacy and high-end fittings and fixtures consisting of brass light switches & plug sockets. The property also retains many of its period features with high ceilings in the living room, skirting and fire place.

Castledine is a quiet road only minutes from the bottom entrance of Crystal Palace Park and the lovely Green & Brown Coffee Shop. With a variety of transport links - 6-mins to Penge West or Anerley, 12mins to Crystal Palace and 15mins to Penge East, the flat is perfect for those needing to commute into central.





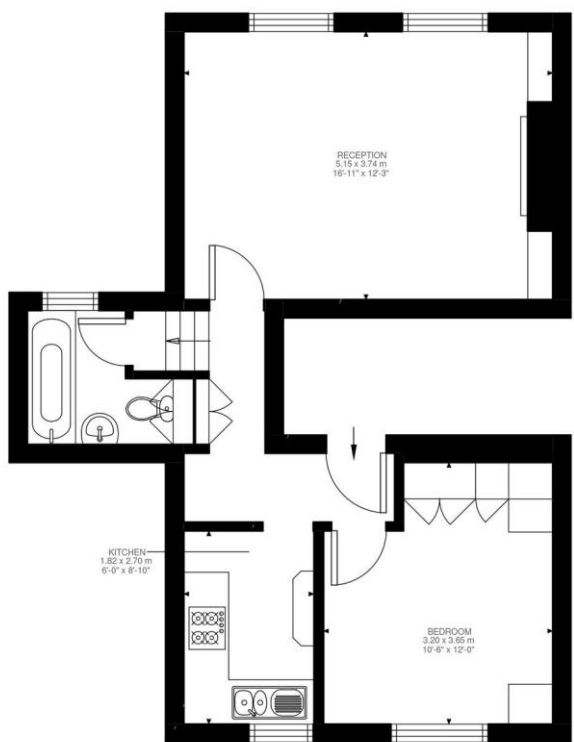
MATERIAL INFO

Tenure: Leasehold

Term: 152 year and 6 months

Council Tax Band: B

EPC rating: D



First Floor
495 ft²

Castledine Road, SE20
Approximate Gross Internal Area
45.97 SQ.M / 495 SQ.FT

Illustration for identification purposes only. Not to scale.
Floor Plan Drawn According To RICS Guidelines.

Score	Energy rating	Current	Potential
92+	A		
81-91	B		
69-80	C		75 C
55-68	D	66 D	
39-54	E		
21-38	F		
1-20	G		

Where no figures are shown, we have been unable to ascertain the information. All figures that are shown were correct at the time of printing.

Crystal Palace
02038693222 | crystalpalace@winkworth.co.uk

Winkworth
for every step...

Winkworth wishes to inform prospective buyers and tenants that these particulars are a guide and act as information only. All our details are given in good faith and believed to be correct at the time of printing but they don't form part of an offer or contract. No Winkworth employee has authority to make or give any representation or warranty in relation to this property. All fixtures and fittings, whether fitted or not are deemed removable by the vendor unless stated otherwise and room sizes are measured between internal wall surfaces, including furnishings.