



DENNING POINT, COMMERCIAL STREET, LONDON, E1

OIEO: £535,000 LEASEHOLD

AN AMAZING TWO DOUBLE BEDROOM SIXTEENTH FLOOR APARTMENT WITH PRIVATE BALCONY

Shoreditch | 020 7749 7650 | shoreditch@winkworth.co.uk

Winkworth



DESCRIPTION:

A superb two double bedroom sixteenth floor apartment available with private balcony and amazing views close to Aldgate. The property comprises a wide entrance hall with storage cupboard, master bedroom and second double bedroom, bathroom with separate shower and W/C, dual aspect open plan kitchen/reception room with built in appliances including; fridge/freezer, washer, dishwasher, electric oven and gas hob. The property has access to a private balcony directly from living room stunning views of the City.

Denning Point is located within easy reach of Aldgate and Aldgate East underground stations as well as Liverpool Street, Whitechapel and Shoreditch stations offering excellent transport across London. Spitalfields market and Brick Lane are also close by offering an array of boutique shops cafes, bars and restaurants.

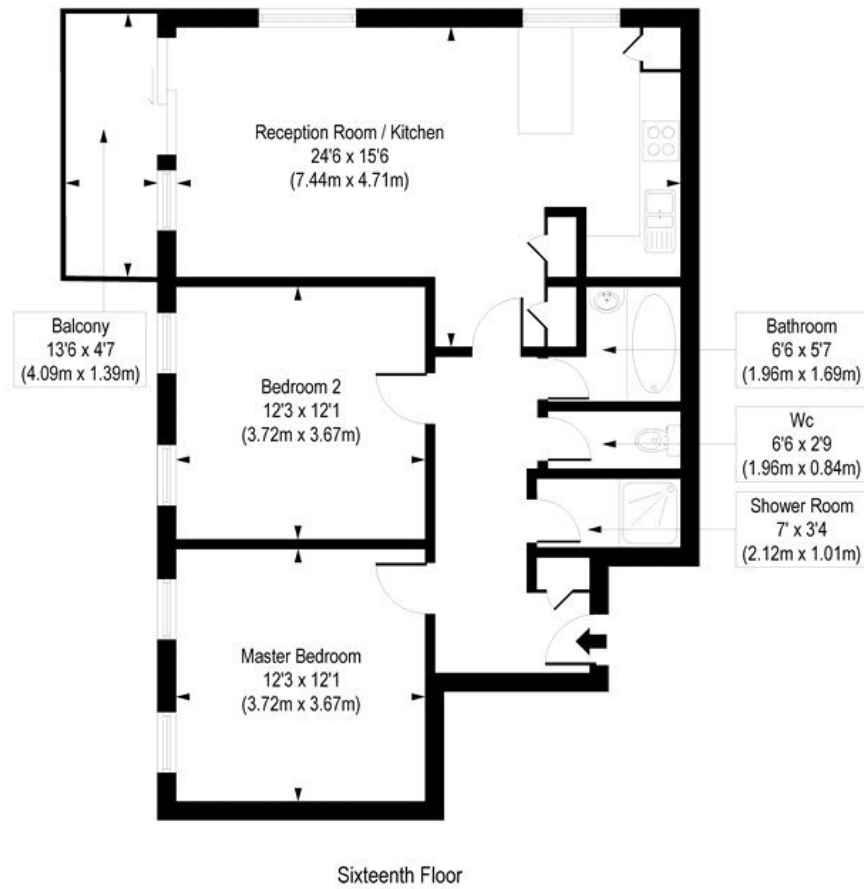
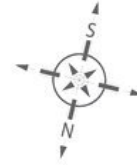
Winkworth



Winkworth

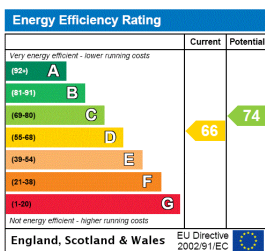
Commercial Street, E1

Approx. Gross Internal Floor Area 811 sq. ft / 75.31 sq. m



COMPLIANT WITH RICS CODE OF MEASURING PRACTICE Floorplan is for illustrative purposes only and is not to scale. Every attempt has been made to ensure the accuracy of the floorplan shown, however all measurements, fixtures, fittings and data shown are an approximate interpretation for illustrative purposes only. Liability for errors, omissions or mis-statement through negligence or otherwise is hereby excluded.

This floorplan is for illustration purposes only and is not to scale. The position and size of doors, windows, appliances and other features are approximate.



Shoreditch | 020 7749 7650 | shoreditch@winkworth.co.uk

Winkworth

winkworth.co.uk

See things differently

Winkworth wishes to inform prospective buyers and tenants that these particulars are a guide and act as information only. All our details are given in good faith and believed to be correct at the time of printing but they don't form part of an offer or contract. No Winkworth employee has authority to make or give any representation or warranty in relation to this property. All fixtures and fittings, whether fitted or not are deemed removable by the vendor unless stated otherwise and room sizes are measured between internal wall surfaces, including furnishings.