

WARRINGTON CRESCENT, MAIDA VALE, LONDON, W9 £2,100,000 SHARE OF FREEHOLD

A wonderful and rare opportunity to purchase a large (approximately 1327 sq. ft.) three bedroom, three-bathroom garden flat, forming part of an impressive stucco fronted Victorian terraced house with direct access to a private patio, leading directly onto the well-known and sought after Formosa communal gardens. The apartment is in excellent condition, ready for immediate occupation, offers well-proportioned accommodation with a large entrance hall with built-in storage, a beautiful reception room with French doors offering access and stunning views across extensive communal gardens, a fully fitted kitchen, a large principal bedroom suite, two further bedrooms, bathroom, and a second ensuite shower room. Warrington Crescent is a tree lined residential street, located in the heart of Little Venice, close to all the local amenities offered by this sought after area including the boutique shops, cafes on Clifton Road (0.4 miles), the famous Regents canal and the underground (0.2 miles) at Warwick Avenue (Bakerloo Line).

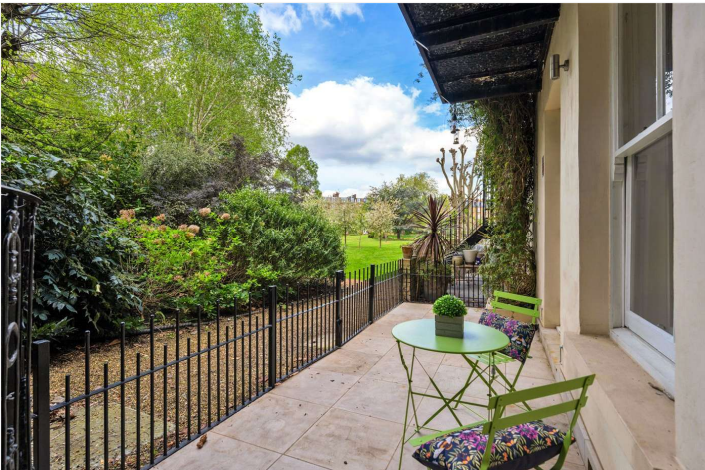
Three Bedrooms | Bathroom | Two Ensuite Shower Rooms | Fully Fitted Kitchen | Large Reception Room | Private Patio | Private Entrance | Communal Gardens | Share of Freehold

View our virtual tour here: <https://youtu.be/yoy3GhRU5-A>

Winkworth

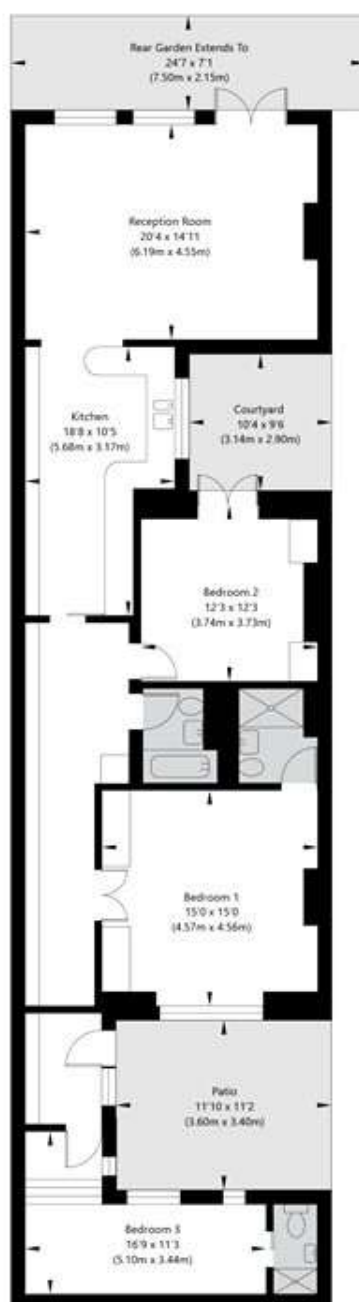
for every step...

[winkworth.co.uk/maida-vale](https://www.winkworth.co.uk/maida-vale)



Warrington Crescent, London W9 1EL

Lower Ground Floor
GROSS INTERNAL FLOOR AREA
APPROX. 123.33 SQ M / 1327 SQ FT



APPROXIMATE GROSS INTERNAL FLOOR AREA 123.33 SQ M / 1327 SQ FT
THIS FLOOR PLAN IS FOR ILLUSTRATIVE PURPOSES ONLY AND
SHOULD BE USED FOR THIS PURPOSE BY PROSPECTIVE APPLICANTS AS ITS NOT TO SCALE.

(c) AMBERSHORE PIX LIMITED / PHOTO - VIDEO - FLOOR PLANS / 0800 999 1577 / WWW.AMBERSHOREPIX.CO.UK

Score	Energy rating	Current	Potential
92+	A		
81-91	B		
69-80	C	75 C	79 C
55-68	D		
39-54	E		
21-38	F		
1-20	G		

Tenure: Share of Freehold

Term: Expires - 24/06/2980

Service Charge: £3,385 per quarter (includes a large contribution to a sinking fund being put in place for the exterior cyclical works)

Ground Rent: £ 0 Annually

Council Tax Band: G

Where no figures are shown, we have been unable to ascertain the information. All figures that are shown were correct at the time of printing.

Where no figures are shown, we have been unable to ascertain the information. All figures that are shown were correct at the time of printing. These particulars are not an offer or contract, nor part of one. You should not rely on statements by Winkworth in the particulars or by word of mouth or in writing "information" as being factually accurate about the property, its condition or its value. Winkworth does not have any authority to make any representations about the property, and accordingly any information given is entirely without responsibility on the part of the agents, seller(s) or lessor(s). These particulars are prepared on the basis of the information supplied by our client and are a rough guide for information only. The photographs show only certain parts of the property. We are not able to check all of the information and therefore are unable to guarantee accuracy. All interested parties are therefore advised to undertake all necessary inspections and checks that they deem appropriate. Where displayed, the square footage is taken from the floor plans, which are created by an independent supplier. These measurements are approximate and included for illustrative purposes only. The measurements may vary. Winkworth does not make any representation as to the accuracy of these measurements and you should seek to verify them for yourself. Winkworth accept no liability for any loss you may suffer if you rely on these measurements. All fixtures and fittings, whether fitted or not are deemed removable by the vendor unless stated. Any reference to alterations to, or use of, any part of the property does not mean that any necessary planning, building regulations or other consent has been obtained. Amenities and appliances have not been tested

Maida Vale | 211-213 Sutherland Avenue, London, W9 1RU | 020 7289 1692 |

maidavale@winkworth.co.uk

Winkworth

for every step...

winkworth.co.uk/maida-vale

Winkworth wishes to inform prospective buyers and tenants that these particulars are a guide and act as information only. All our details are given in good faith and believed to be correct at the time of printing but they don't form part of an offer or contract. No Winkworth employee has authority to make or give any representation or warranty in relation to this property. All fixtures and fittings, whether fitted or not are deemed removable by the vendor unless stated otherwise and room sizes are measured between internal wall surfaces, including furnishings.