

ST. JAMES'S GARDENS, W11

£545 PER WEEK (£2,361.66 PCM) FURNISHED

A WONDERFULLY BRIGHT AND AIRY ONE BEDROOM FLAT ON THE FIRST FLOOR OF THIS PERIOD CONVERSION WITH USE AND VIEWINGS OF THE STUNNING COMMUNAL GARDEN SQUARE BELOW.

Notting Hill Lettings | 0207 727 3227 | nottinghill@winkworth.co.uk

Winkworth

for every step...

winkworth.co.uk



DESCRIPTION:

The property comprises separate fully fitted kitchen with South facing window, spacious living room with high ceilings and wonderful South facing aspect over the gardens, large storage cupboard in hallway, spacious double bedroom to the back of the property and stairs leading down into generously sized en-suite bathroom with shower. The property is offered furnished and viewings are highly recommended.

Utilities:

Electricity – Mains

Water – Mains

Sewerage – Mains

Heating – Gas

Broadband <https://checker.ofcom.org.uk/en-gb/broadband-coverage>

Mobile Coverage <https://checker.ofcom.org.uk/en-gb/mobile-coverage>

LOCATION:

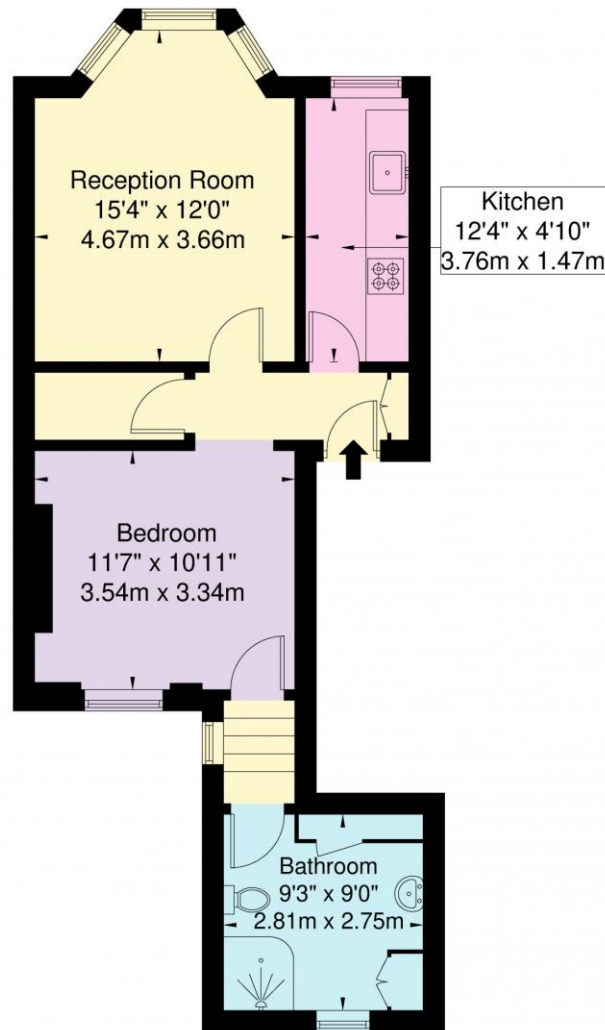
St James's Gardens is located on a quiet and pretty tree lined square, tucked away in the heart of Holland Park and just a short walk from Holland Park tube stations.





St James's Gardens, W11 4R

Approx. Gross Internal Area = 50.6 sq m / 544 sq ft



First Floor

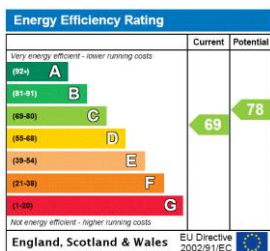
Ref

Copyright **BLEU PLAN**

The Floor plan is not to scale and measurements and areas shown are approximate and therefore should be used for illustrative purposes only. The plan has been prepared in accordance with the RICS code of Measuring Practice and whilst we have confidence in the information produced it must not be relied on. If there is any aspect of particular importance, you should carry out or commission your own inspection of the property.

Copyright @ BLEUPLAN

This floorplan is for illustration purposes only and is not to scale. The position and size of doors, windows, appliances and other features are approximate.



Deposit: £2,875

Holding Deposit: £575

Council Tax Band: F (RBKC)

Where no figures are shown, we have been unable to ascertain the information. All figures that are shown were correct at the time of printing.

Notting Hill Lettings | 0207 727 3227 | nottinghill@winkworth.co.uk

Winkworth

for every step...

winkworth.co.uk

Winkworth wishes to inform prospective buyers and tenants that these particulars are a guide and act as information only. All our details are given in good faith and believed to be correct at the time of printing but they don't form part of an offer or contract. No Winkworth employee has authority to make or give any representation or warranty in relation to this property. All fixtures and fittings, whether fitted or not are deemed removable by the vendor unless stated otherwise and room sizes are measured between internal wall surfaces, including furnishings.