



GLOUCESTER TERRACE, BAYSWATER, W2
£895,000 LEASE, PLUS SHARE OF FREEHOLD: ABOUT 978 YEARS REMAINING

LOCATED IN W2, A SHORT STROLL FROM HYDE PARK, SET IN AN ATTRACTIVE GRADE II STUCCO FRONTED PERIOD BUILDING - WITH SHARE OF FREEHOLD, A WELL PROPORTIONED, TWO BEDROOM GARDEN APARTMENT, WITH A SECLUDED REAR SOUTHWEST FACING COURTYARD GARDEN AND AN ADDITIONAL FRONT PATIO, ACCESSED VIA A PAIR OF PART GLAZED, FRENCH DOORS.

Paddington & Bayswater | 020 7467 5770 | paddington@winkworth.co.uk

Winkworth

for every step...

winkworth.co.uk



DESCRIPTION:

Gloucester Terrace, with its white stucco period terraces, is a sought after central London location in the vicinity of Paddington and Bayswater. Located in the City of Westminster - W2, it runs northwards from Lancaster Terrace and London's most notable Royal Park - Hyde Park, before curving round to meet Porchester Square. This property is offered for sale with no upward chain and long lease.



Winkworth

for every step...



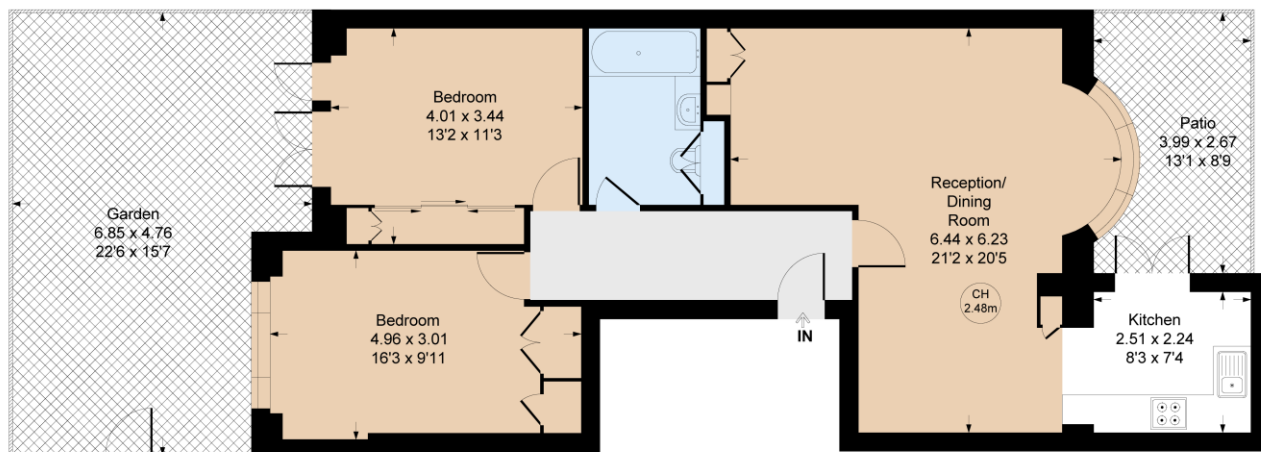
Winkworth

for every step...

Gloucester Terrace, W2

Approximate Gross Internal Area = 77.10 sq m / 830 sq ft

Key :
CH - Ceiling Height



Lower Ground Floor

Not to scale, for guidance only and must not be relied upon as a statement of fact.
All measurements and areas are approximate only

This floorplan is for illustration purposes only and is not to scale. The position and size of doors, windows, appliances and other features are approximate.

Tenure: Share of Freehold

Term: 978 year and 10 months

Service Charge: About £2,960 per annum

Ground Rent: Peppercorn

Council Tax Band: E

Where no figures are shown, we have been unable to ascertain the information. All figures that are shown were correct at the time of printing.

West End | 020 7240 3322 | westend@winkworth.co.uk

Winkworth

for every step...

[winkworth.co.uk](https://www.winkworth.co.uk)

Winkworth wishes to inform prospective buyers and tenants that these particulars are a guide and act as information only. All our details are given in good faith and believed to be correct at the time of printing but they don't form part of an offer or contract. No Winkworth employee has authority to make or give any representation or warranty in relation to this property. All fixtures and fittings, whether fitted or not are deemed removable by the vendor unless stated otherwise and room sizes are measured between internal wall surfaces, including furnishings.