



FURZEHILL ROAD, HERTFORDSHIRE, WD6
£785,000 FREEHOLD

A THREE BEDROOM CORNER SEMI DETACHED HOUSE WITH GARAGE IN SOUTH BOREHAMWOOD

Borehamwood | 020 8953 8899 | borehamwood@winkworth.co.uk



Winkworth

DESCRIPTION:

At approaching 1200 Square feet this three bedroom family house already provides generous, bright and well presented family accommodation whilst offering substantial scope for extension and development subject to the usual planning consents.

Occupying a corner plot on the South side of Borehamwood, close to several "good" and "outstanding" Ofsted rated schools including Yavneh, Summerswood and Monksmead, the house is offered for sale chain free and has the added benefit of a detached garage approached via its own driveway from Elmwood Avenue.

AT A GLANCE

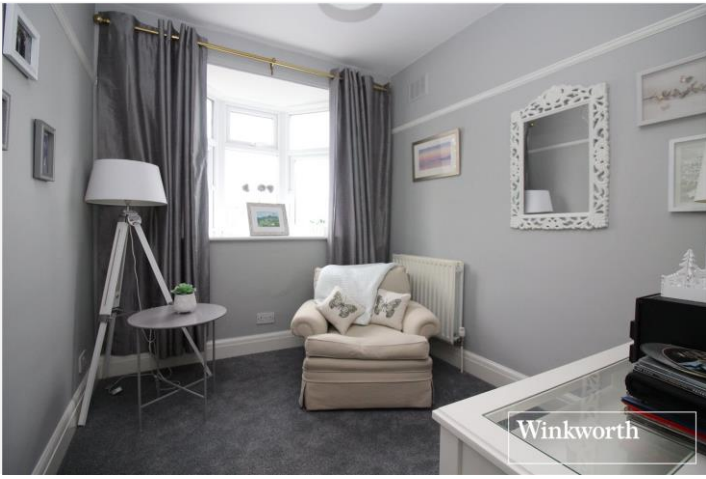
- 3 Bedrooms
- South Borehamwood
- 1176 Square Feet
- Chain Free
- Detached Garage
- Scope To Extend (Stpp)
- Corner Plot
- Gas Central Heating
- Double Glazed



Winkworth



Winkworth



Winkworth



Winkworth



Winkworth



Winkworth



Winkworth

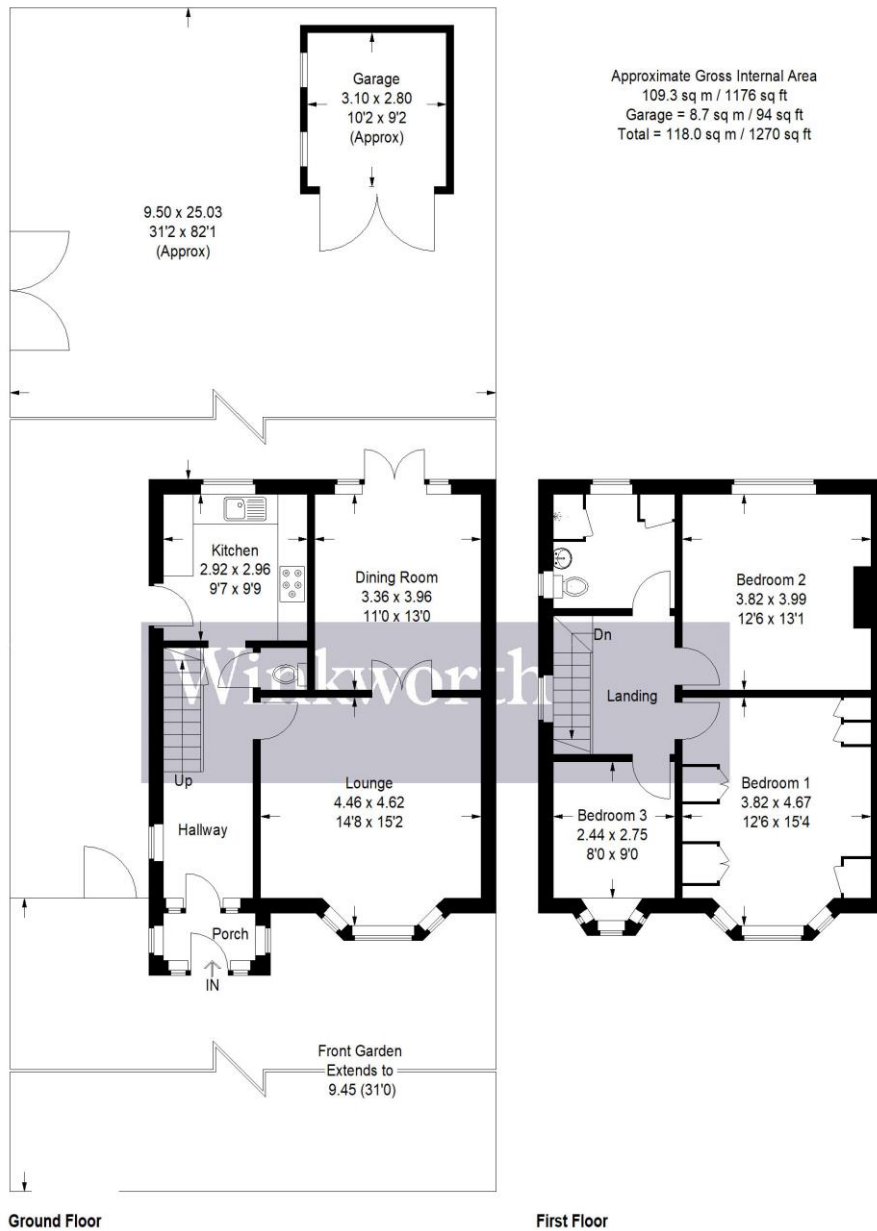


Illustration for identification purposes only, measurements are approximate, not to scale. Winkworth © 2023 (ID988909)

This floorplan is for illustration purposes only and is not to scale. The position and size of doors, windows, appliances and other features are approximate.

- Tenure:** Freehold
- Term:** Expires -
- Service Charge:** £0 per annum
- Ground Rent:** £ 0 Annually (subject to increase)
- Council Tax Band:** E

Where no figures are shown, we have been unable to ascertain the information. All figures that are shown were correct at the time of printing.