



**KENNET HOUSE, READING, BERKSHIRE, RG1 3BJ**  
**£1,400 PER MONTH FURNISHED**

## **ONE BEDROOM FOURTH FLOOR APARTMENT IN READING TOWN CENTRE.**

Reading | 0118 4022 300 | [reading@winkworth.co.uk](mailto:reading@winkworth.co.uk)

**Winkworth**

for every step...

[winkworth.co.uk](http://winkworth.co.uk)





## DESCRIPTION:

Modern fourth floor one bedroom apartment within the popular Kennet House development. Accommodation comprises entrance hall with a storage/laundry cupboard housing the washing machine, open plan living room / kitchen, double bedroom and a three piece bathroom. The property further benefits from a video entry system, lift access and a concierge service on the ground floor. Available 30th October 2025. Furnished.

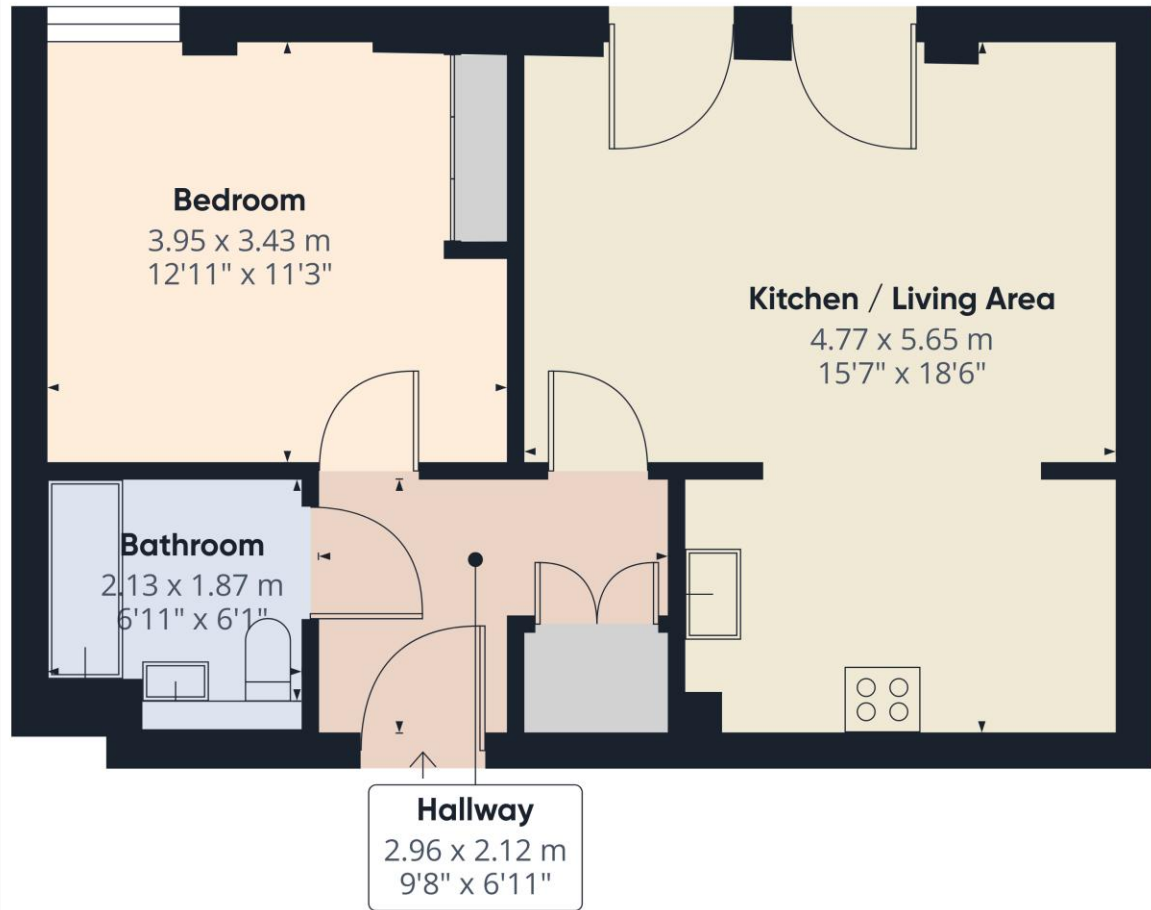
Ideally located on the banks of the Kennet and Avon Canal and within a short walk of Reading train station, with its direct link to London Paddington in just 21 minutes and on the tube network via the Elizabeth Line, linking Reading to Canary Wharf and the City of London.

## AT A GLANCE

- Modern one bedroom apartment
- Town Centre location
- Juliette balcony
- Council tax band C
- No parking
- Available 30th October
- Furnished







**Winkworth**

**Approximate total area<sup>(1)</sup>**  
46.9 m<sup>2</sup>  
505 ft<sup>2</sup>

(1) Excluding balconies and terraces

Calculations reference the RICS IPMS 3C standard. Measurements are approximate and not to scale. This floor plan is intended for illustration only.

GIRAFFE 360

This floorplan is for illustration purposes only and is not to scale. The position and size of doors, windows, appliances and other features are approximate.

Score	Energy rating	Current	Potential
92+	A		
81-91	B		
69-80	C	80 C	85 B
55-68	D		
39-54	E		
21-38	F		
1-20	G		

**Deposit:** £1,615.38

**Holding Deposit:** £323.07

**Council Tax Band:** C

Where no figures are shown, we have been unable to ascertain the information. All figures that are shown were correct at the time of printing.

**Winkworth**

for every step...

Reading | 0118 4022 300 | [reading@winkworth.co.uk](mailto:reading@winkworth.co.uk)

[winkworth.co.uk](http://winkworth.co.uk)

Winkworth wishes to inform prospective buyers and tenants that these particulars are a guide and act as information only. All our details are given in good faith and believed to be correct at the time of printing but they don't form part of an offer or contract. No Winkworth employee has authority to make or give any representation or warranty in relation to this property. All fixtures and fittings, whether fitted or not are deemed removable by the vendor unless stated otherwise and room sizes are measured between internal wall surfaces, including furnishings.