



MARGARETS BUILDINGS, BA1
£175,000 LEASEHOLD

Winkworth



MARGARETS BUILDINGS, BA1

Sought after location | Pedestrianised street | second floor.

A second floor studio apartment with plenty of potential

Entrance hall | living / bedroom | separate kitchen | bathroom. Residence parking permit available.

Situated between The Royal Crescent and The Circus Margaret's Buildings is a pedestrianised street with independent shops, restaurants, cafes and art galleries.

A stone's throw to Royal Victoria Park, this 55 acres green space acts as your garden with BBQ tables and other places to relax.

The apartment is on the second floor, there is a private entrance hall which leads into a large living space, there are 3 windows overlooking the street and allowing in a lot of light.

There is a separate kitchen off the living space and a bathroom off the entrance hall.

Residents parking permit available.

Grade II listed

Tenure: Leasehold remainder of 999 years

Service charge: £1,250pa

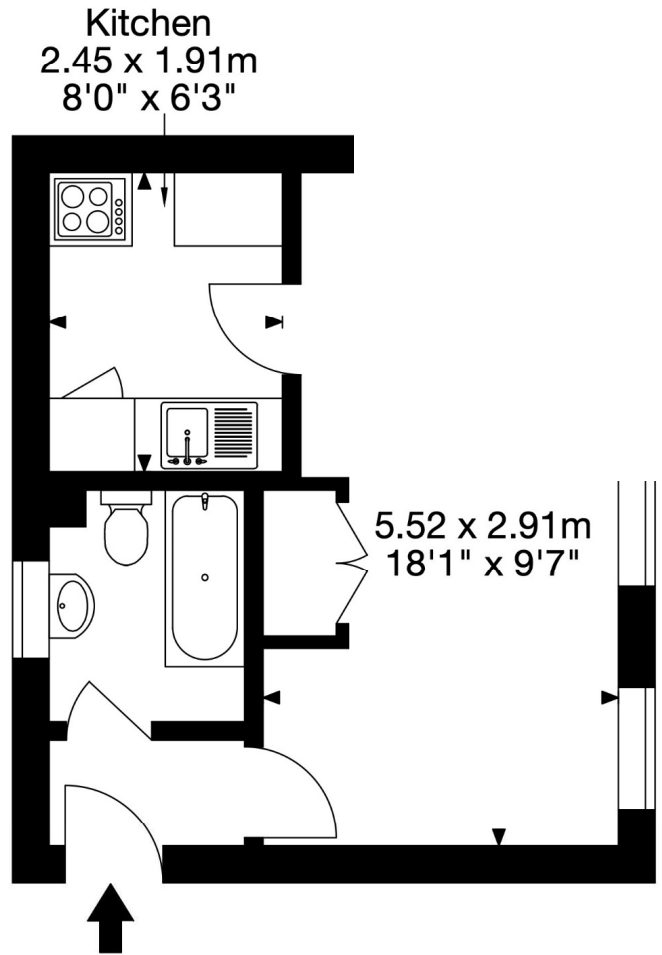
Council tax: tbc

Services, electricity, main water and drainage



Flat 4, 10-11 Margaret's Buildings
Bath BA1 2LP

Approx. Gross Internal Area
277 Sq Ft - 26 Sq M



Capture Property Marketing 2022. Drawn to RICS guidelines.
All Measurements are approximate and should not be relied on as a statement of fact.
Plan is for illustration purposes only. Not drawn to scale.

Capture.

Bath | 01225 829 000 | bath@winkworth.co.uk

winkworth.co.uk

Winkworth wishes to inform prospective buyers and tenants that these particulars are a guide and act as information only. All our details are given in good faith and believed to be correct at the time of printing but they don't form part of an offer or contract. No Winkworth employee has authority to make or give any representation or warranty in relation to this property. All fixtures and fittings, whether fitted or not are deemed removable by the vendor unless stated otherwise and room sizes are measured between internal wall surfaces, including furnishings.

