

NORTHSTAND APARTMENTS, Highbury Stadium Square, London, N5
£700,000 LEASEHOLD

**A STUNNING TWO BEDROOM TWO
 BATHROOM APARTMENT SITUATED IN THE
 PRESTIGIOUS Highbury Stadium Square**

Islington | 0207 354 2480 | islington@winkworth.co.uk

Winkworth

winkworth.co.uk

See things differently

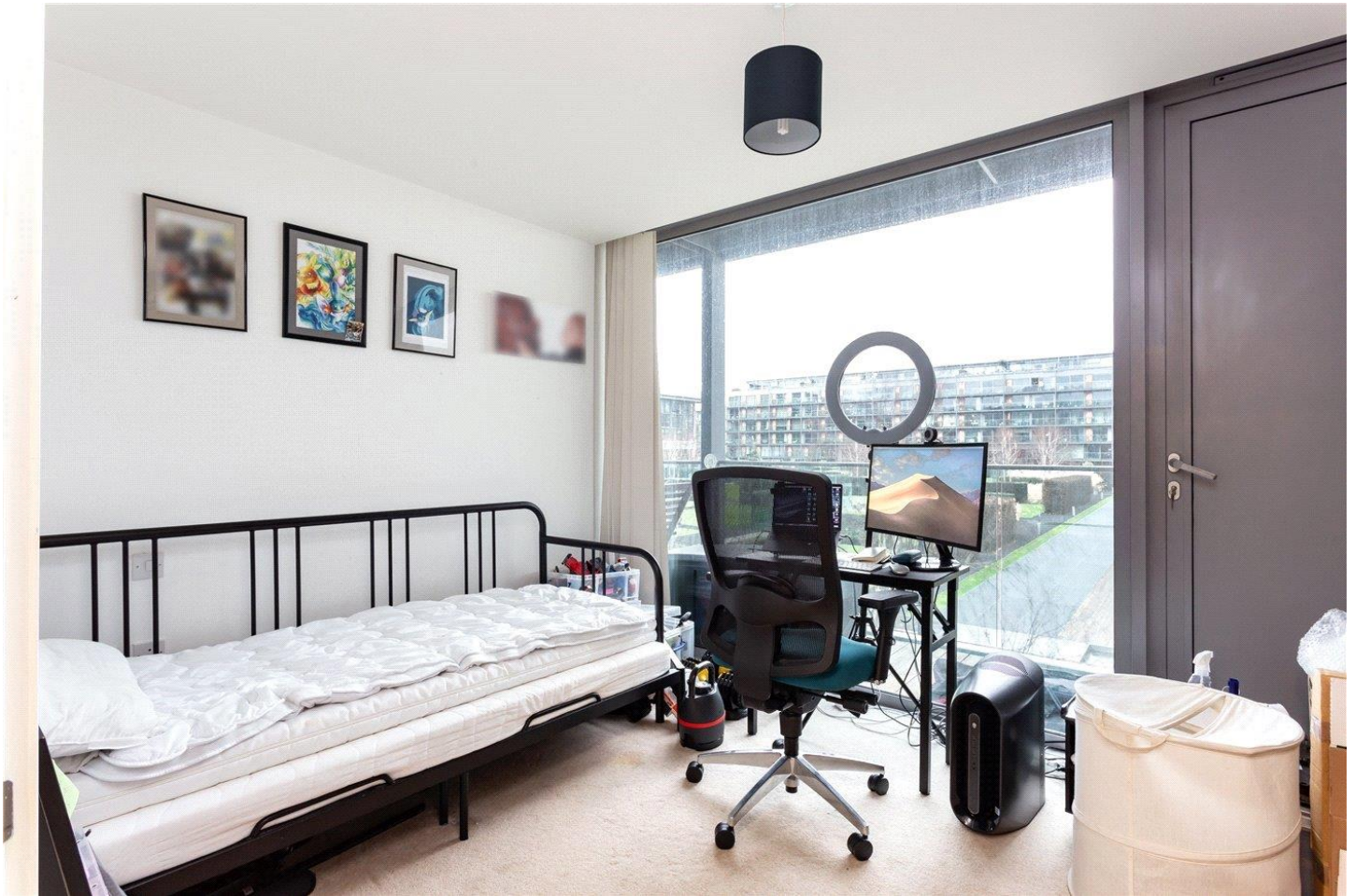


DESCRIPTION:

Set within the Northstand of this highly sought after development, is this well-proportioned two bedroom, two bathroom apartment. On entering the property, you are welcomed into a wonderfully generous open plan living space, with fully integrated kitchen. The living area opens directly onto a private balcony. The property offers two good sized double bedrooms and a family bathroom, with a modern, contemporary feel. There is also a second ensuite bathroom with a similar finish. The property has an abundance of natural light and a great feeling of space throughout. The property further benefits from beautifully landscaped communal gardens, concierge and a secure underground parking space.

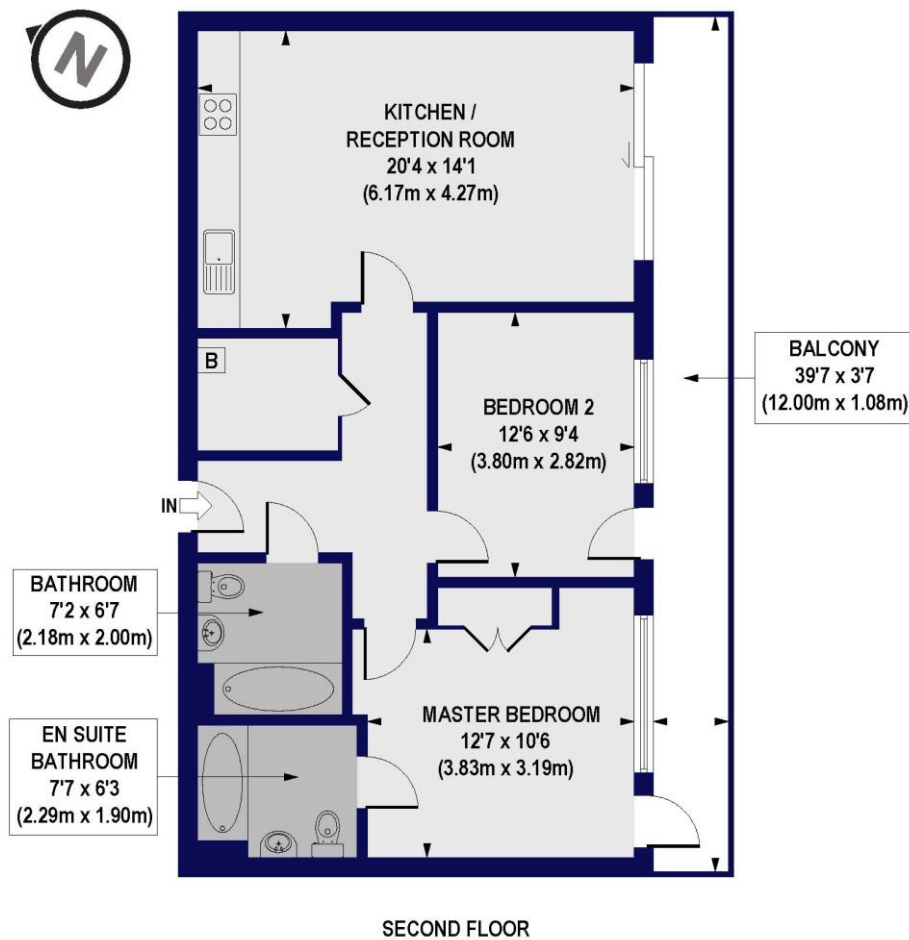
Highbury Stadium Square is located moments from Arsenal tube underground station (Piccadilly line), Finsbury Park underground station (Piccadilly & Victoria lines). Drayton Park over ground is also close by offering access to the city within 10 minutes. Blackstock Road offers a variety of local amenities such as convenience stores, dry cleaners and restaurants. Larger scale shopping facilities can be found in Angel or Holloway. Highbury Barn also offers fantastic local shops.

Winkworth



Winkworth

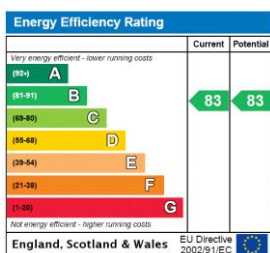
Northstand Apartments, Highbury Stadium Square, N5
Approx. Gross Internal Floor Area 802 sq. ft / 74.49 sq. m



All measurements of walls, doors, windows, fittings and appliances, including their size and location, are shown as standard sizes and do not constitute any warranty or representation by the seller, their agent or CP Creative. Any intending purchaser must satisfy himself by inspection or otherwise as to the correctness of the information contained in these plans. This plan is for illustrative purposes only and should be used as such by any prospective purchasers.

Winkworth

This floorplan is for illustration purposes only and is not to scale. The position and size of doors, windows, appliances and other features are approximate.



Islington | 0207 354 2480 | islington@winkworth.co.uk

Winkworth

winkworth.co.uk

See things differently

Winkworth wishes to inform prospective buyers and tenants that these particulars are a guide and act as information only. All our details are given in good faith and believed to be correct at the time of printing but they don't form part of an offer or contract. No Winkworth employee has authority to make or give any representation or warranty in relation to this property. All fixtures and fittings, whether fitted or not are deemed removable by the vendor unless stated otherwise and room sizes are measured between internal wall surfaces, including furnishings.