



MORETON STREET, SW1V

OIEO £300,000

LEASEHOLD

At a glance...

- Large Studio Flat
- 3rd Floor
- Communal Roof Terrace
- Good Condition
- Central Pimlico Location
- Council Tax Band: C

Winkworth

for every step...



Score	Energy rating	Current	Potential
92+	A		
81-91	B		
69-80	C	70 C	77 C
55-68	D		
39-54	E		
21-38	F		
1-20	G		

MORETON STREET, SW1V

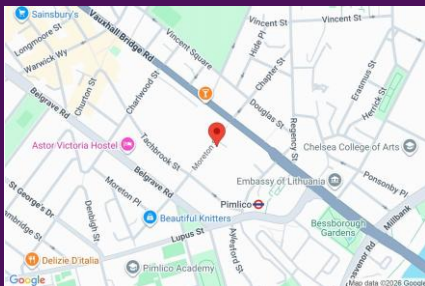
£300,000

LEASEHOLD

A great studio flat offering over 300 square feet of ample accommodation.

Located on the third floor of this well-run building the flat offers a large, bright studio room with open plan kitchen and separate shower room. There is also access to a communal roof terrace.

Presented in good condition this flat is an ideal London base located in the heart of SW1 and close to the transport links of Pimlico and Victoria.

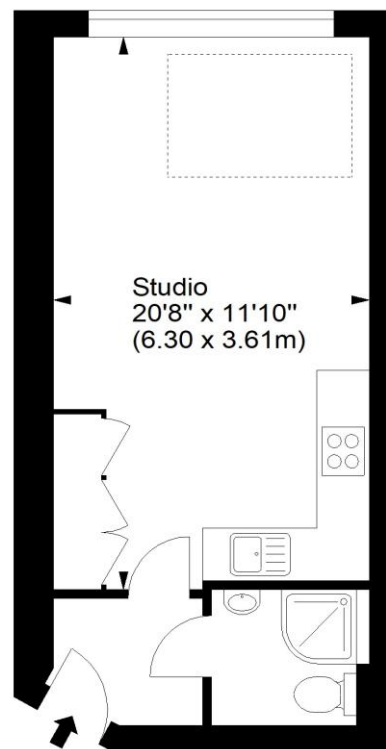


winkworth wishes to inform prospective buyers and tenants that these particulars are a guide and act as information only. All our details are given in good faith and believed to be correct at the time of printing but they don't form part of an offer or contract. No winkworth employee has authority to make or give any representation or warranty in relation to this property. All fixtures and fittings, whether fitted or not are deemed removable by the vendor unless stated otherwise and room sizes are measured between internal wall surfaces - including fireplaces.

Moreton Street, SW1



Approx. Gross Internal Area
303 Sq Ft - 28.15 Sq M



Third Floor

For illustration purposes only. Not to scale.
All measurements are taken and shown at floor level.
www.r3photography.co.uk © Photography / Floor Plans / Lease Plans / EPCs

Winkworth

Pimlico & Westminster

020 7828 1786

pimlico@winkworth.co.uk

winkworth.co.uk/pimlico-westminster

Winkworth

for every step...