



THORPEWOOD AVENUE, LONDON, SE26
£1,000,000 TO BE ADVISED

Forest Hill | | foresthill@winkworth.co.uk



DESCRIPTION:

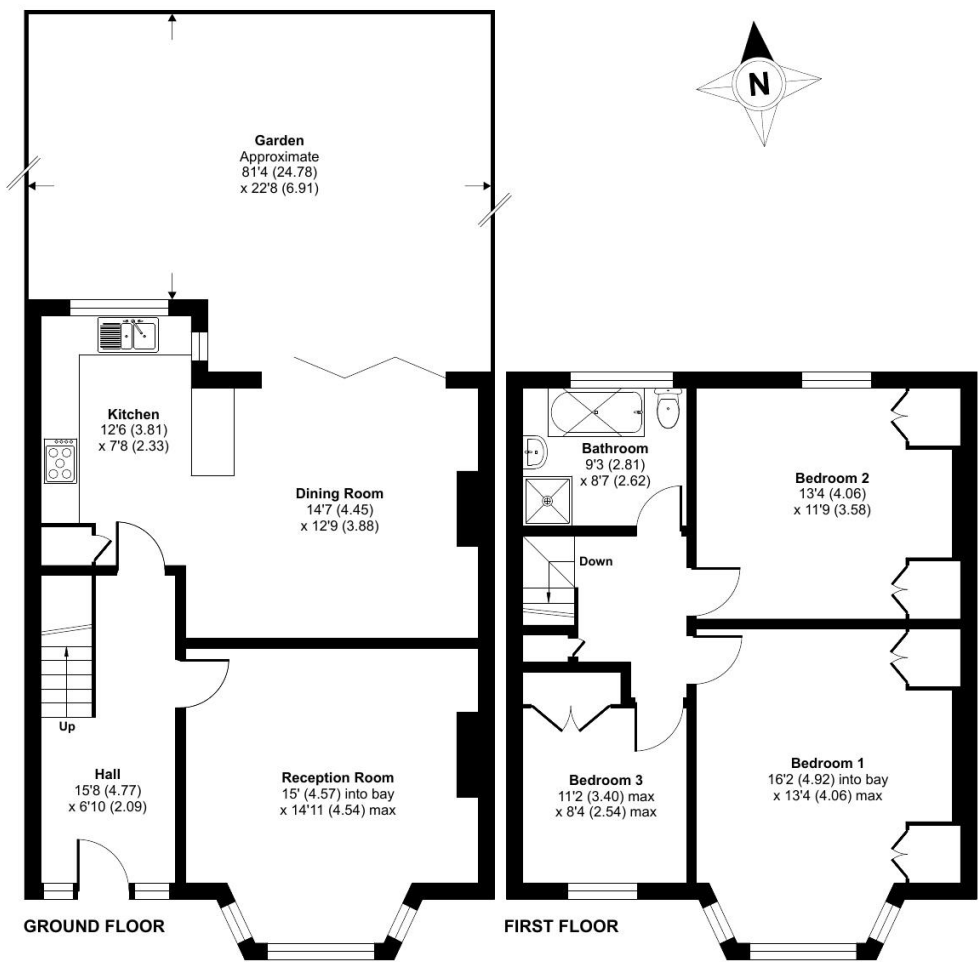
This delightful Three bedroom terraced house is full of character and period charm, making it an ideal choice for growing families. Beautifully retaining its original features including exposed wooden beams, high ceilings and large bay windows. The home offers a warm and inviting atmosphere throughout.





Thorpewood Avenue, London, SE26

Approximate Area = 1196 sq ft / 111.1 sq m
For identification only - Not to scale



Floor plan produced in accordance with RICS Property Measurement Standards incorporating International Property Measurement Standards (IPMS2 Residential). © nchecon 2025. Produced for Winkworth Forest Hill and New Cross. REF: 1335844

This floorplan is for illustration purposes only and is not to scale. The position and size of doors, windows, appliances and other features are approximate.

Tenure: Freehold

Score	Energy rating	Current	Potential
92+	A		
81-91	B		
69-80	C		
55-68	D	66 D	81 B
39-54	E		
21-38	F		
1-20	G		