



BALLARDS LANE, NORTH FINCHLEY, LONDON, N12
£1,900 PER MONTH FURNISHED

**A SPACIOUS WELL-PRESENTED TWO
 BEDROOM GROUND FLOOR FLAT SET IN AN
 IDEAL LOCATION**

Finchley | 020 8349 3388 | finchley@winkworth.co.uk

Winkworth

for every step...

winkworth.co.uk



DESCRIPTION:

Winkworth are pleased to offer this large two double bedroom ground floor conversion flat, ideally situated in the heart of North Finchley for transport, shopping facilities and recreational parkland. The property comprises of a spacious front reception room, two double bedrooms, large kitchen/diner leading to rear garden and a modern family bathroom. Offered on a furnished basis. Available from mid-September.

AT A GLANCE

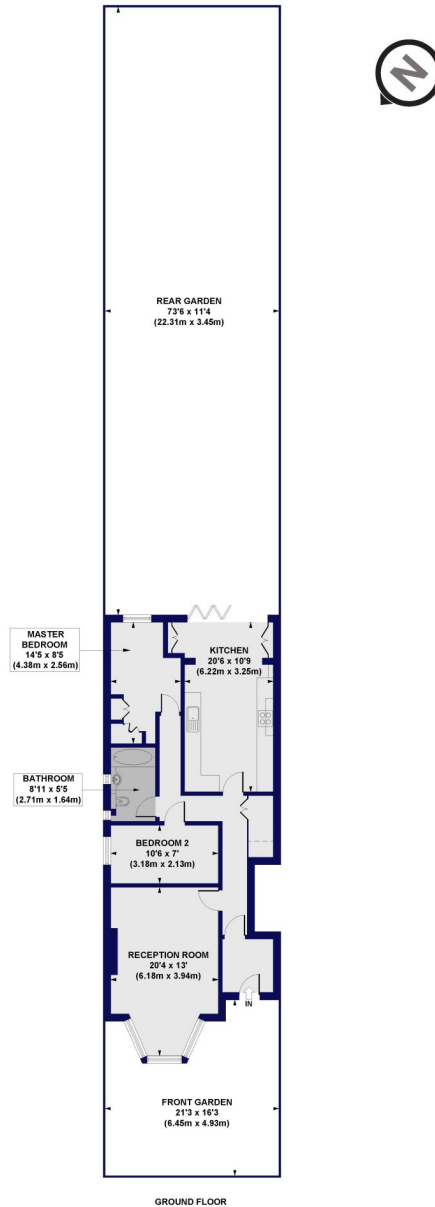
- Ground floor flat
- Ideal location for amenities & transport links
- Two bedrooms
- Large reception room
- Kitchen/diner
- Access to garden
- Furnished





Ballards Lane, N12

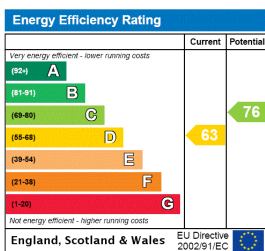
Approx. Gross Internal Floor Area 906 sq. ft / 84.20 sq. m



All measurements of walls, doors, windows, fittings and appliances, including their size and location, are shown as standard sizes and do not constitute any warranty or representation by the seller, their agent or CP Creative. Any intending purchaser must satisfy himself by inspection or otherwise as to the correctness of the information contained in these plans. This plan is for illustrative purposes only and should be used as such by any prospective purchasers.

Winkworth

This floorplan is for illustration purposes only and is not to scale. The position and size of doors, windows, appliances and other features are approximate.



Finchley | 020 8349 3388 | finchley@winkworth.co.uk

Winkworth

for every step...

winkworth.co.uk

Winkworth wishes to inform prospective buyers and tenants that these particulars are a guide and act as information only. All our details are given in good faith and believed to be correct at the time of printing but they don't form part of an offer or contract. No Winkworth employee has authority to make or give any representation or warranty in relation to this property. All fixtures and fittings, whether fitted or not are deemed removable by the vendor unless stated otherwise and room sizes are measured between internal wall surfaces, including furnishings.