



SILVESTER ROAD, EAST DULWICH, SE22
£575,000 LEASEHOLD

A TRULY STUNNING, GROUND-FLOOR
GARDEN FLAT SITUATED IN A PRIME
LOCATION IN SE22.

Dulwich | 020 8299 2722 | dulwich@winkworth.co.uk

Winkworth

winkworth.co.uk

See things differently



DESCRIPTION:

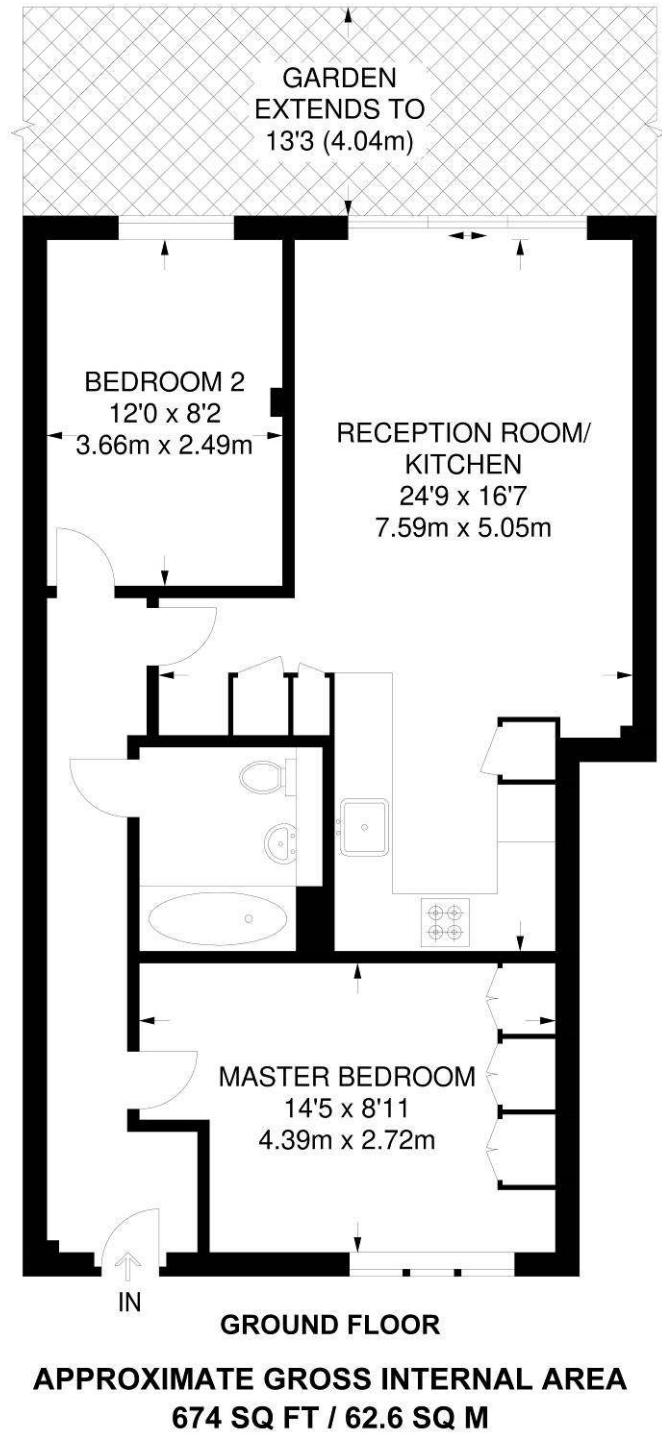
A truly stunning, ground-floor garden flat situated in a prime location in SE22. This stunning flat is set within the Royal Mail Delivery office on Silvester Road, boasting two spacious double bedrooms, a large family bathroom, and impressive open-plan kitchen/ reception. Offered to the market in an impeccable standard and high-end finish, this New Build Apartment behind a Victorian heritage façade designed in 1894 by architect Henry Tanner is ideal for first-time buyers, or rental investors looking for a turn-key property. The location offers easy access to all the bars and restaurants on Lordship Lane, green open spaces at Dulwich Park or Peckham Rye Park, and transport links from Denmark Hill on the overground or East Dulwich for direct links to London Bridge. This is a stunning flat and early viewings are highly advised.

AT A GLANCE

- Two Bedrooms
- Ground Floor Flat
- Open-Plan Kitchen/Reception Room
- Large Bathroom
- Garden
- Leasehold
- Chain Free
- Last Remaining Unit in the Block
- 10-Year New Build Warranty







This floorplan is for illustration purposes only and is not to scale. The position and size of doors, windows, appliances and other features are approximate.

Energy Efficiency Rating		Current	Potential
Very energy efficient - lower running costs			
(92-100)	A		
(81-91)	B		
(69-80)	C		
(55-68)	D	68	68
(39-54)	E		
(21-38)	F		
(1-20)	G		
Not energy efficient - higher running costs			
England, Scotland & Wales		EU Directive 2002/91/EC	

Dulwich | 020 8299 2722 | dulwich@winkworth.co.uk



winkworth.co.uk

See things differently

Winkworth wishes to inform prospective buyers and tenants that these particulars are a guide and act as information only. All our details are given in good faith and believed to be correct at the time of printing but they don't form part of an offer or contract. No Winkworth employee has authority to make or give any representation or warranty in relation to this property. All fixtures and fittings, whether fitted or not are deemed removable by the vendor unless stated otherwise and room sizes are measured between internal wall surfaces, including furnishings.