

Eaton Mews South, London, SW1W
£9,000 *PCM*

3  2  2 



Winkworth Knightsbridge & Chelsea
020 7589 6616 | knightsbridge@winkworth.co.uk

Winkworth

for every step...

Elegant three-bedroom mews house in the heart of Belgravia

ABOUT THIS FLAT

This beautiful mews house offers three bedrooms, a large double aspect reception room across the first floor, a separate eat in kitchen and two bathrooms. There is also a separate study room which offers versatility by having a separate reception space. The property is available on an unfurnished basis. Eaton Mews South is a pretty mews located to the south of Eaton Square and adjacent to Eccleston Street. Eaton Mews South benefits from being conveniently located within 0.2 miles of Elizabeth street with local boutique shops and amenities. The closest tube stations are Victoria (Victoria Line) located 0.3 miles from the property and Sloane Square (District & Circle Lines) located 0.5 miles from the property.

KEY FEATURES

- 3 bedrooms
- 2 reception room
- 2 bathrooms
- 1,604 Square Feet
- Separate Study
- Unfurnished







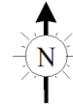




EATON MEWS SOUTH, SW1W

Approximate gross internal area

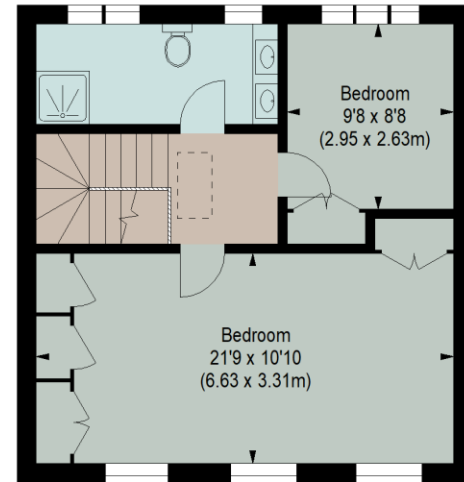
1604 sq ft / 149.01 sq m



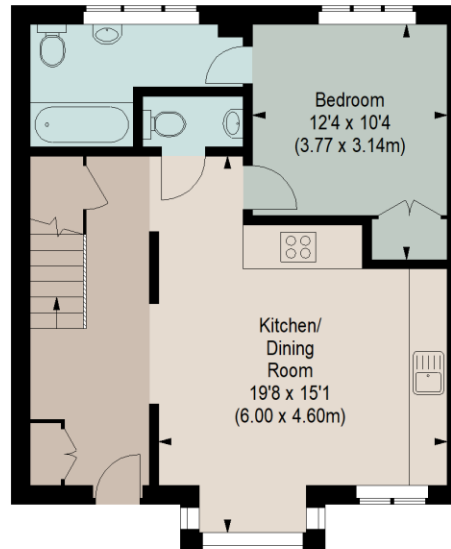
FINER DETAILS

- 3 bedrooms
- 2 reception room
- 2 bathrooms
- 1,604 Square Feet
- Separate Study
- Unfurnished

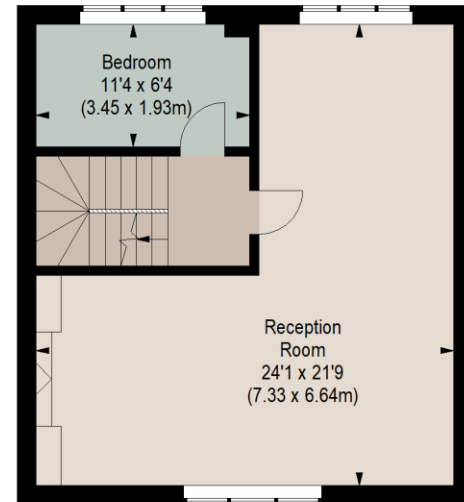
Score	Energy rating	Current	Potential
92+	A		
81-91	B		85 B
69-80	C		
55-68	D	67 D	
39-54	E		
21-38	F		
1-20	G		



SECOND FLOOR



GROUND FLOOR



FIRST FLOOR

Although every attempt has been made to ensure accuracy, all measurements are approximate.
This floorplan is for illustrative purposes only and not to scale.
Measured in accordance with RICS standards.



Winkworth Knightsbridge & Chelsea
020 7589 6616 | knightsbridge@winkworth.co.uk

Winkworth

for every step...