

Eaton Mews South, SW1W  
£9,499.00 *PCM*

3  2  2 



Winkworth Knightsbridge  
020 7589 6616 | [knightsbridge@winkworth.co.uk](mailto:knightsbridge@winkworth.co.uk)

**Winkworth**  
for every step...

# Elegant Three-Bedroom Mews House in the Heart of Belgravia

---

## ABOUT THIS HOUSE

This beautiful mews house offers three bedrooms, a boutique shops and amenities. The closest tube large double aspect reception room across the first floor, a separate eat in kitchen and two bathrooms. stations are Victoria (Victoria Line) located 0.3 miles from the property and Sloane Square (District & Circle Lines) located 0.5 miles from the property.) There is also a separate study room which offers versatility by having a separate reception space. The located 0.5 miles from the property. property is available on an unfurnished basis. Eaton Mews South is a pretty mews located to the south of Eaton Square and adjacent to Eccleston Street. Eaton Mews South benefits from being conveniently located within 0.2 miles of Elizabeth street with local

---

## KEY FEATURES

- 3 bedrooms
- 2 reception room
- 2 bathrooms
- 1,604 Square Feet
- Separate Study
- Unfurnished















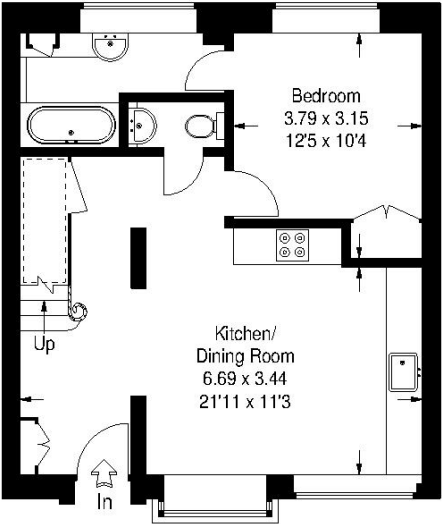
# Eaton Mews South, SW1W

Gross internal area ( Approx ) :-  
 149 sq m / 1604 sq ft  
 For identification only. Not to scale.  
 © Floorplanz Ltd



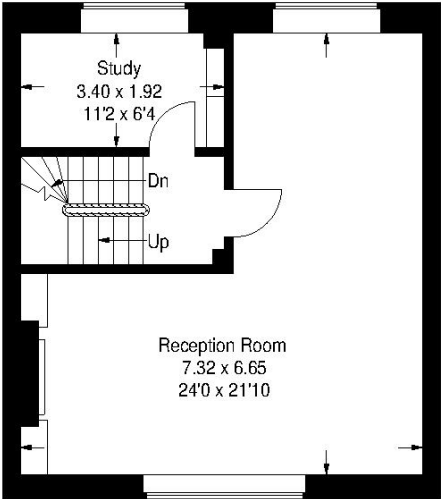
## FINER DETAILS

- 3 bedrooms
- 2 reception room
- 2 bathrooms
- 1,604 Square Feet
- Separate Study
- Unfurnished

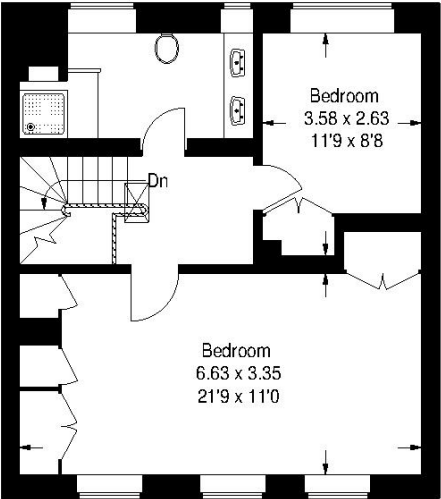


= Reduced headroom below 1.5 m / 5'0

Ground Floor



First Floor



Second Floor

Score	Energy rating	Current	Potential
92+	<b>A</b>		
81-91	<b>B</b>		<b>85 B</b>
69-80	<b>C</b>		
55-68	<b>D</b>	<b>57 D</b>	
39-54	<b>E</b>		
21-38	<b>F</b>		
1-20	<b>G</b>		





Winkworth Knightsbridge  
020 7589 6616 | [knightsbridge@winkworth.co.uk](mailto:knightsbridge@winkworth.co.uk)

**Winkworth**

for every step...