

Semley Place, SW1W

£2,350 PER MONTH

FURNISHED

AT A GLANCE

- Two Double Bedrooms
- Open Plan Kitchen Reception
- Bathroom with Separate Shower
- Balcony
- Split Level
- Ample Storage
- Excellent Location

Winkworth

for every step...



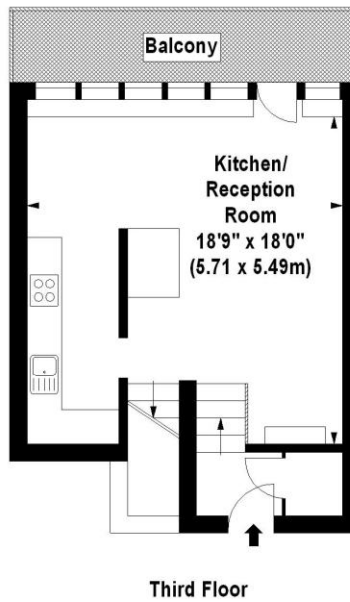
Score	Energy rating	Current	Potential
92+	A		
81-91	B		
69-80	C		77 C
55-68	D	68 D	
39-54	E		
21-38	F		
1-20	G		

SEMLEY PLACE, SW1W

£2,350 PER MONTH

FURNISHED

A spacious two double bedroom maisonette complete with south-west facing balcony. Situated moments from Pimlico Road and Sloane Square. This delightful property comprises a bright and spacious open plan kitchen reception room, two double bedrooms (both with built in storage space), bathroom and a private balcony. The property benefits from ample storage and an excellent location.



**Semley House,
Semley Place, SW1**
Approx. Gross Internal Area *
800 Sq Ft - 74.32 Sq M

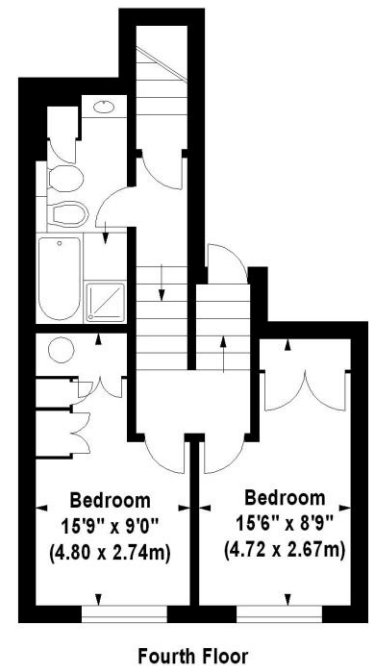
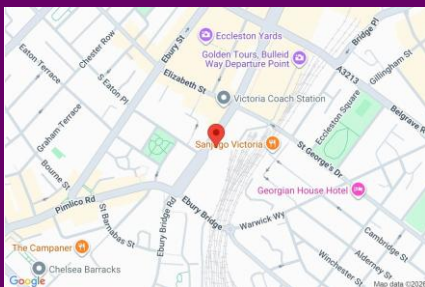


Illustration For Identification Purposes Only. Not To Scale
*Floorplan Drawn According To RICS Guidelines



winkworth wishes to inform prospective buyers and tenants that these particulars are a guide and act as information only. All our details are given in good faith and believed to be correct at the time of printing but they don't form part of an offer or contract. No winkworth employee has authority to make or give any representation or warranty in relation to this property. All fixtures and fittings, whether fitted or not are deemed removable by the vendor unless stated otherwise and room sizes are measured between internal wall surfaces - including fireplaces.

Pimlico & Westminster | 020 7828 1786 |
pimlico@winkworth.co.uk

winkworth.co.uk/pimlico

Winkworth

for every step...