

KINGSMEAD ROAD, SW2
£1,275,000 FREEHOLD

**CHARMING SIX-BEDROOM PERIOD HOME WITH
FLEXIBLE LAYOUT, SUNNY GARDEN AND EXCELLENT
LOCAL CONNECTIONS**

Streatham | 020 8769 6699 | streatham@winkworth.co.uk

Winkworth

for every step...

winkworth.co.uk



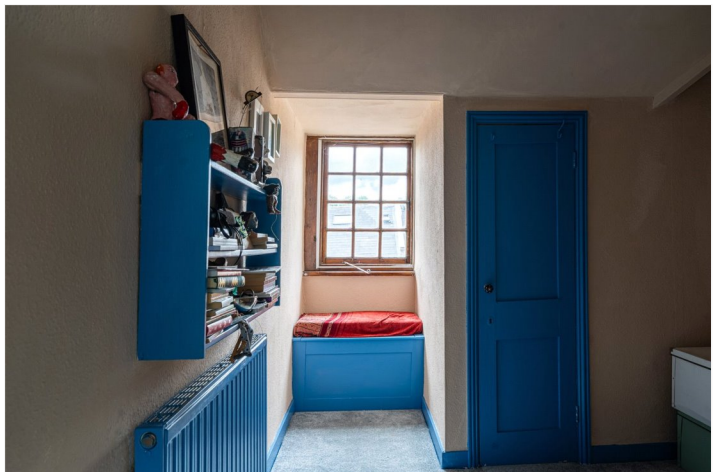
DESCRIPTION

Set back from the street behind a charming front garden, this spacious six-bedroom family home offers generous proportions, flexible living, and a coveted position between Streatham Hill and Tulse Hill. Spanning over 2,200 square feet across three floors, the house blends original character with practical space, ideal for growing families or those seeking long-term potential.

The ground floor opens into a wide entrance hallway with a bright front reception room, complete with large bay windows and period detailing. To the rear, a separate dining room leads through to a glass-roofed conservatory and a delightful south-facing garden—perfect for entertaining or winding down. The kitchen and breakfast nook complete the layout, providing plenty of versatility.

Six bedrooms are arranged over the upper floors, accompanied by a stylish family bathroom. Each room is well-proportioned, with options for guest rooms, home offices or creative studios depending on need. The layout lends itself to adaptation and future reconfiguration, including potential for further bathrooms or extensions (subject to permissions).

Located on the leafy and sought-after Kingsmead Road, the house is well positioned for a mix of local shops, restaurants, and cafés, with excellent transport links from both Tulse Hill and Streatham Hill stations.





Winkworth

TOTAL: 2295 sq. ft, 213 m²
 GROUND FLOOR: 948 sq. ft, 88 m², FIRST FLOOR: 870 sq. ft, 81 m², SECOND FLOOR: 477 sq. ft, 44 m²

All measurements of walls, doors, windows, fittings and appliances, including their size and location, are shown as standard sizes and do not constitute any warranty or representation by the seller, their agent or Winkworth. Any intending purchaser must satisfy himself by inspection or otherwise as to the correctness of the information contained in these plans. This plan is for illustrative purposes only and should be used as such by any prospective purchasers.



This floorplan is for illustration purposes only and is not to scale. The position and size of doors, windows, appliances and other features are approximate.

Score	Energy rating	Current	Potential
92+	A		
81-91	B		
69-80	C		79 C
55-68	D		
39-54	E	53 E	
21-38	F		
1-20	G		

Tenure: Freehold

Term: 0 year and 0 months

Service Charge: £0 per annum

Ground Rent: £ 0 Annually (subject to increase)

Council Tax Band: F

Where no figures are shown, we have been unable to ascertain the information. All figures that are shown were correct at the time of printing.

Winkworth

Streatham | 020 8769 6699 | streatham@winkworth.co.uk

for every step...

winkworth.co.uk

Winkworth wishes to inform prospective buyers and tenants that these particulars are a guide and act as information only. All our details are given in good faith and believed to be correct at the time of printing but they don't form part of an offer or contract. No Winkworth employee has authority to make or give any representation or warranty in relation to this property. All fixtures and fittings, whether fitted or not are deemed removable by the vendor unless stated otherwise and room sizes are measured between internal wall surfaces, including furnishings.