



HEWER STREET, W10  
£7,995 PER MONTH UNFURNISHED

Winkworth





## HEWER STREET, W10

Behind a charming exterior, this thoughtfully designed home on Hewer Street opens into an inviting entrance hall, lined with classic tongue-and-groove panelling. Upstairs, the heart of the home reveals a striking blend of industrial character and organic softness. A vaulted glass roof floods the open-plan living space with natural light, creating an uplifting atmosphere ideal for both entertaining and everyday living.

At one end, a porthole window adds a unique touch to the contemporary kitchen, where marble countertops and teal tiles bring style and vibrancy. Blonde timber floors lead to a cosy lounge area, defined by an exposed chimney breast that adds warmth to the clean-lined aesthetic. Sliding glass doors extend the space onto a private decked terrace – a peaceful setting for outdoor dining or relaxation.

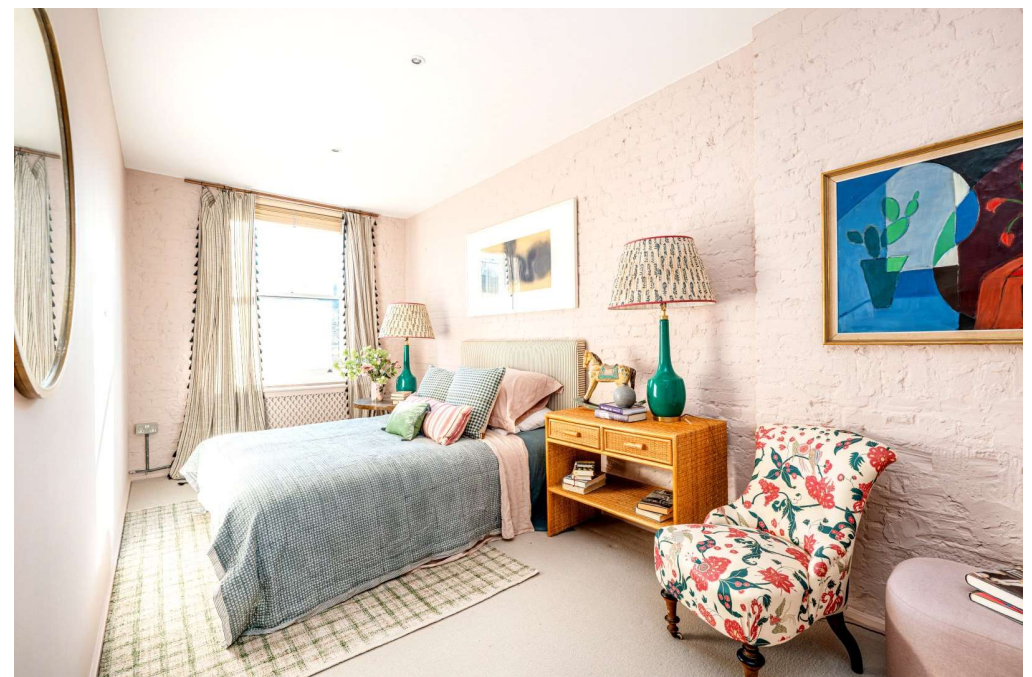
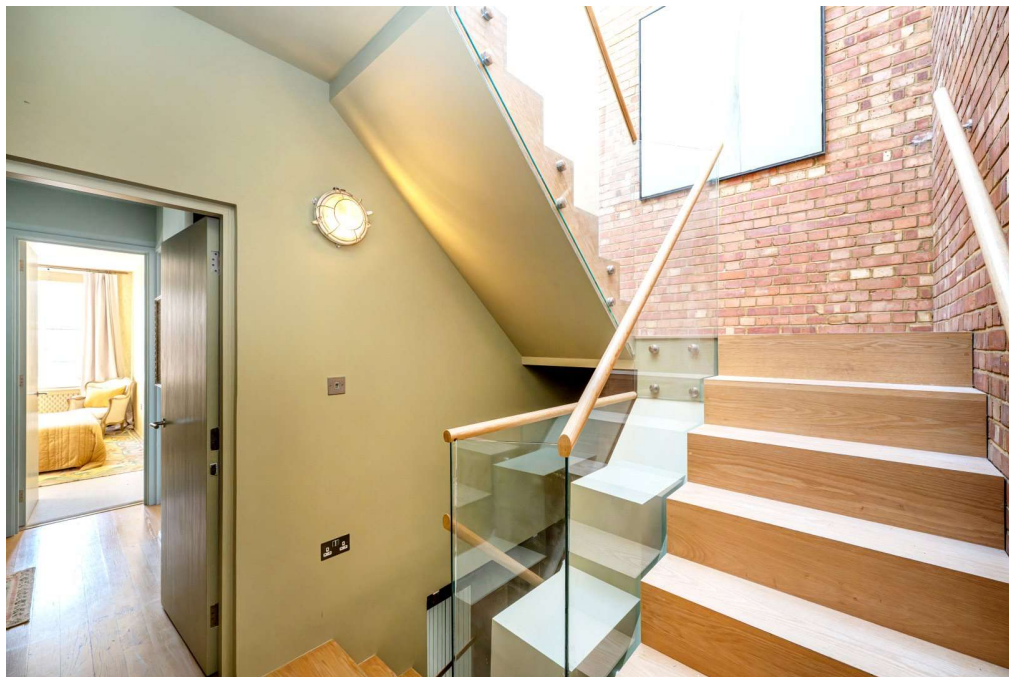
Downstairs, a red brick feature wall and overhead skylight illuminate the stairwell, guiding you to the home's sleeping quarters. The principal bedroom exudes calm with a minimalist palette, anchored by a striking black fireplace. A flexible dressing room or private study connects to a stylish en suite bathroom with a bathtub. Two additional bedrooms on this level are finished with painted brickwork and served by a contemporary shower room featuring cream mosaic and light blue metro tiles.

Located in the heart of North Kensington, this home is set within a neighbourhood known for its strong sense of community and rich character. Tree-lined streets and period architecture are paired with an array of independent cafés, local shops, and green spaces, offering an ideal balance of tranquillity and urban convenience.

Just 10 minutes away, Golborne Road invites with its eclectic charm – stop by Layla's for coffee and pastries or enjoy a laid-back lunch at Pizza East. Explore the antique shops dotted along the street or unwind in nearby Little Wormwood Scrubs. For a more extensive retail experience, The Village at Westfield Shopping Centre is close by, featuring a selection of luxury brands. Excellent transport links also place central London's cultural institutions – from theatres to galleries – within easy reach.

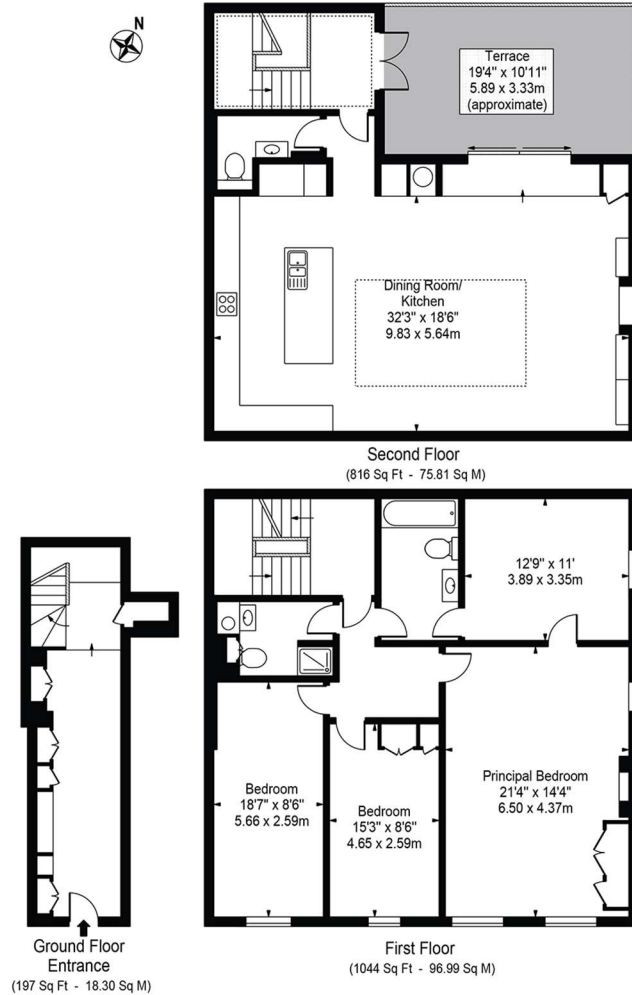






# Hewer Street

Approx. Gross Internal Area 2057 Sq Ft - 191.10 Sq M



For Illustration Purposes Only - Not To Scale

This floor plan should be used as a general outline for guidance only and does not constitute in whole or in part an offer or contract. Any intending purchaser or lessee should satisfy themselves by inspection, searches, enquiries and full survey as to the correctness of each statement. Any areas, measurements or distances quoted are approximate and should not be used to value a property or be the basis of any sale or let. Copyright Morriarti Photography & Design LTD

Score	Energy rating	Current	Potential
92+	A		
81-91	B		
69-80	C		
55-68	D		69 D
39-54	E	46 E	
21-38	F		
1-20	G		

North Kensington | 020 7792 5000 | northkensington@winkworth.co.uk

winkworth.co.uk

Winkworth wishes to inform prospective buyers and tenants that these particulars are a guide and act as information only. All our details are given in good faith and believed to be correct at the time of printing but they don't form part of an offer or contract. No Winkworth employee has authority to make or give any representation or warranty in relation to this property. All fixtures and fittings, whether fitted or not are deemed removable by the vendor unless stated otherwise and room sizes are measured between internal wall surfaces, including furnishings.

Winkworth