



LITTLEWOOD, HITHER GREEN, LONDON, SE13 6SD
£775,000 FREEHOLD

**A STUNNING, MUCH IMPROVED AND LARGER THAN USUAL,
 THREE BEDROOM, TWO BATHROOM, TWO RECEPTION ROOM
 VICTORIAN HOUSE WITH A DELIGHTFUL GARDEN FOUND
 CLOSE TO STATIONS AND ALL AMENITIES.**

Blackheath | 0208 8520999 | blackheath@winkworth.co.uk

Winkworth

winkworth.co.uk

See things differently



DESCRIPTION:

The property is in excellent decorative order throughout with period features, high ceilings, double glazed windows, plantation shutters, partial under floor heating (bathroom and shower room) and gas fired central heating.

The accommodation comprises; entrance hall with understairs storage, a lovely 14' x 12'2 front reception room with feature fireplace, bay window, alcove storage and interconnecting doors to a 12'1 x 10'2 second reception room. To the rear is a huge 22'3 modern kitchen diner. Upstairs is a very large 15'11 x 12' master bedroom with bespoke built in wardrobes, second double bedroom with built in wardrobes and a third double bedroom with beautiful modern shower room as well as a superb family bathroom with p-shape bath with shower over. The delightful rear garden extends to approx. 30ft with deck, artificial lawn, flower beds, shed and great storage space to the side return. There is also an electric awning fitted above the French doors, which covers the whole of the decking area when it is completely extended out. The property further benefits from two large loft spaces and in 2020 the vendors obtained a Lawful Development Certificate to convert these into a large master suite with dressing room and bathroom.

This is a beautiful home and your immediate viewing is essential. Video tour can be seen at winkworth.co.uk

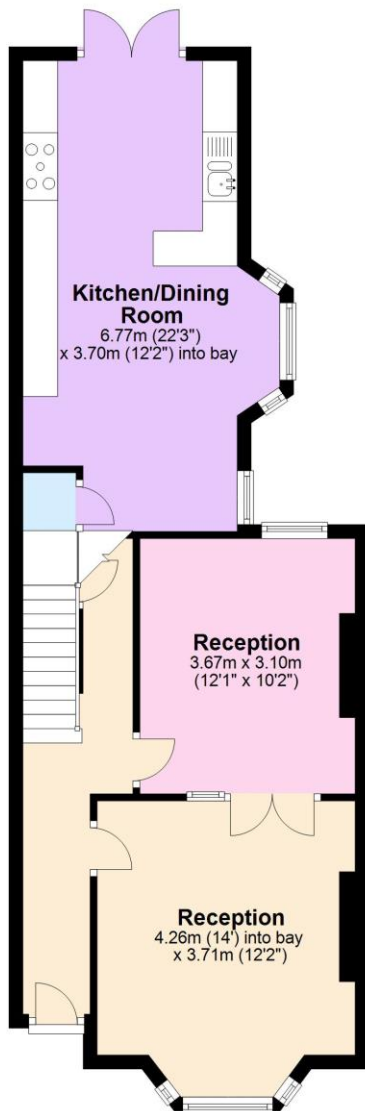
The property is very close to Hither Green station, (0.35 miles), and within easy reach of both Ladywell Station, (0.5miles), and Lewisham Station & DLR, (0.89 miles). The popular open spaces of Manor House Gardens and Mountsfield Park are a short walk with the popular Blackheath Village just 1.2 miles away. The vibrant centre of Hither Green includes a Sainsbury's Local, French Patisserie Cafe (La Delice), an incredible Deli and Bottle Shop (Found Hope Store), cocktail bar (Drink@Bob's) a florist (Otto's Greenhouse) and Italian restaurant and pizzeria (Sapore Vero), craft beer and chocolate shop (Park Fever) and gastropub The Station Hotel. The ever improving Ladywell Village offers independent delis and shops and Lewisham has extensive shopping choices and is being enhanced by new investment, attracting new restaurants and amenities. There are several popular primary schools close by included the Ofsted "Outstanding" Brindishe Green Primary School.





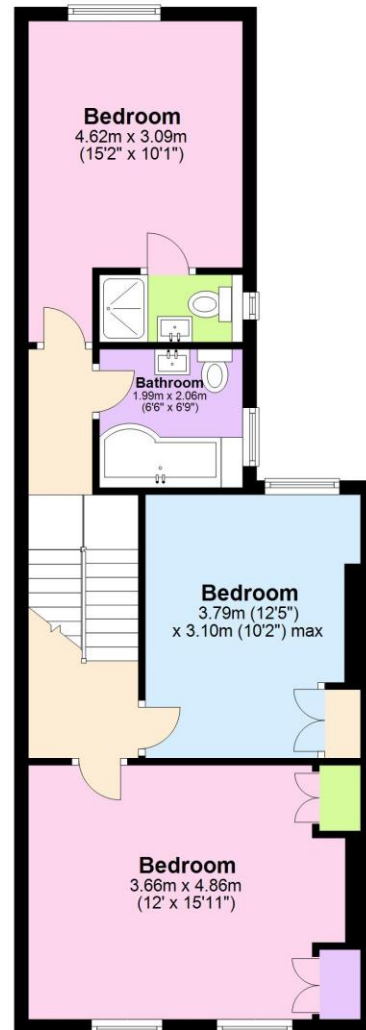
Ground Floor

Approx. 58.2 sq. metres (626.7 sq. feet)



First Floor

Approx. 57.1 sq. metres (614.6 sq. feet)



Total area: approx. 115.3 sq. metres (1241.2 sq. feet)

This floorplan is for illustration purposes only and is not to scale. The position and size of doors, windows, appliances and other features are approximate. Any lease and service charge details have been provided by the vendor. Any interest party should have these checked by a solicitor as part of the purchase process.

Blackheath | 0208 8520999 | blackheath@winkworth.co.uk

Winkworth

winkworth.co.uk

See things differently

Winkworth wishes to inform prospective buyers and tenants that these particulars are a guide and act as information only. All our details are given in good faith and believed to be correct at the time of printing but they don't form part of an offer or contract. No Winkworth employee has authority to make or give any representation or warranty in relation to this property. All fixtures and fittings, whether fitted or not are deemed removable by the vendor unless stated otherwise and room sizes are measured between internal wall surfaces, including furnishings.