

MERANTI HOUSE, ALIE STREET, LONDON, E1
£700,000 LEASEHOLD

STYLISH ONE-BEDROOM APARTMENT WITH PRIVATE BALCONY & 24 HOUR CONCIERGE

Shoreditch | 020 7749 7650 | shoreditch@winkworth.co.uk

Winkworth

winkworth.co.uk

See things differently



DESCRIPTION:

This stylish apartment offers 643 sqft of living space on the 5th floor, with a peaceful courtyard-facing view.

The contemporary kitchen features high-end fittings and can be closed off with sliding doors, perfect for heavier cooking, while still maintaining a seamless connection to the open-plan living area. This space extends onto a private balcony, ideal for your morning coffee or unwinding in the evening.

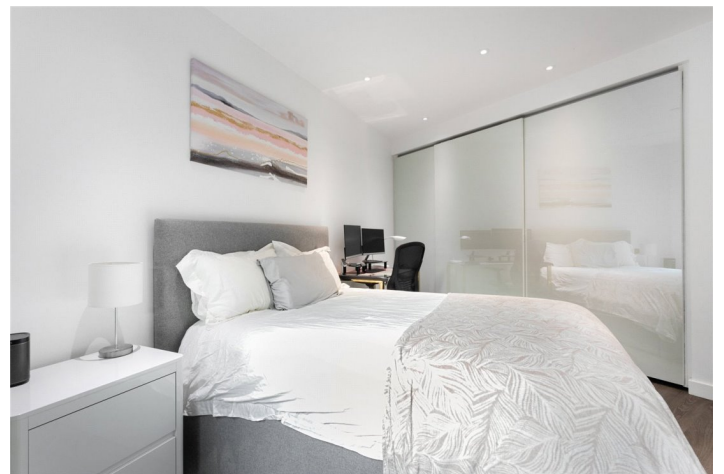
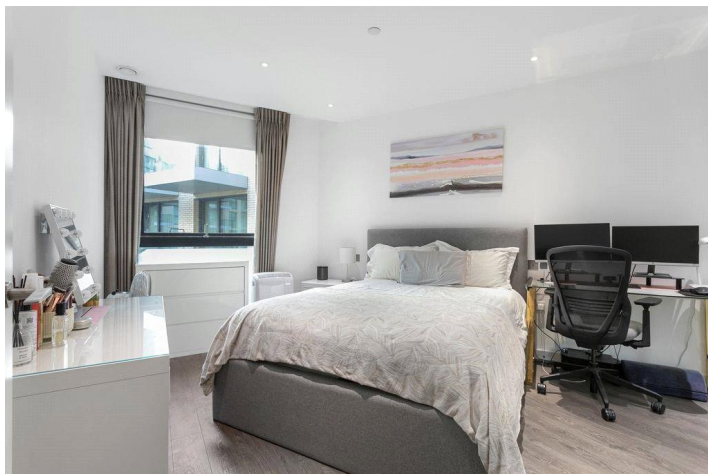
The spacious bedroom features a large built-in wardrobe, providing ample storage, while additional hallway storage ensures plenty of space for coats and essentials. The modern bathroom is fitted with a walk-in shower, bath, and toilet.

Having been owner-occupied, the apartment has been maintained to an exceptional standard, ensuring it is in pristine condition.

Situated in Meranti House, one of the premium buildings within the sought-after Goodmans Fields development, residents enjoy a wealth of luxury amenities, including an onsite gymnasium, swimming pool, spa facilities, 24-hour concierge, and a private cinema room.

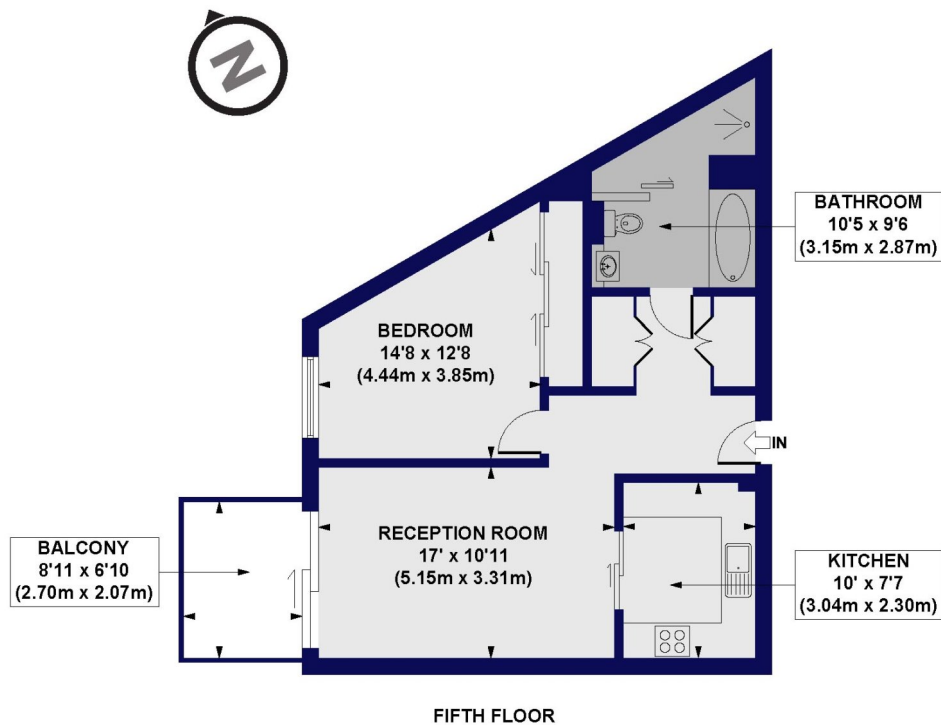
Ideally located, the apartment is just 0.6 miles from Spitalfields Market, offering a vibrant atmosphere and easy access to public transport, with Aldgate East Underground Station (0.2 miles), Whitechapel Underground Station (0.6 miles), and Liverpool Street Station (1.0 mile) all close by.

Winkworth



Winkworth

Alie Street, E1
Approx. Gross Internal Floor Area 643 sq. ft / 59.74 sq. m



FIFTH FLOOR

All measurements of walls, doors, windows, fittings and appliances, including their size and location, are shown as standard sizes and do not constitute any warranty or representation by the seller, their agent or CP Creative. Any intending purchaser must satisfy himself by inspection or otherwise as to the correctness of the information contained in these plans. This plan is for illustrative purposes only and should be used as such by any prospective purchasers.

Winkworth

This floorplan is for illustration purposes only and is not to scale. The position and size of doors, windows, appliances and other features are approximate.

Energy Efficiency Rating		
	Current	Potential
Very energy efficient - lower running costs		
(92-100) A		
(81-91) B	87	87
(69-80) C		
(55-68) D		
(39-54) E		
(21-38) F		
(1-20) G		
Not energy efficient - higher running costs		
England, Scotland & Wales EU Directive 2002/91/EC		

Shoreditch | 020 7749 7650 | shoreditch@winkworth.co.uk

Winkworth

winkworth.co.uk

See things differently

Winkworth wishes to inform prospective buyers and tenants that these particulars are a guide and act as information only. All our details are given in good faith and believed to be correct at the time of printing but they don't form part of an offer or contract. No Winkworth employee has authority to make or give any representation or warranty in relation to this property. All fixtures and fittings, whether fitted or not are deemed removable by the vendor unless stated otherwise and room sizes are measured between internal wall surfaces, including furnishings.