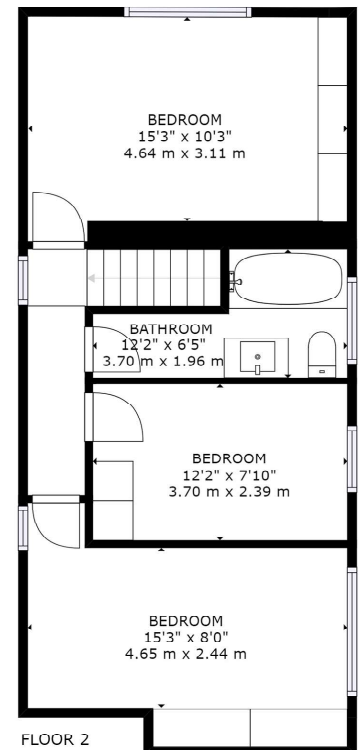
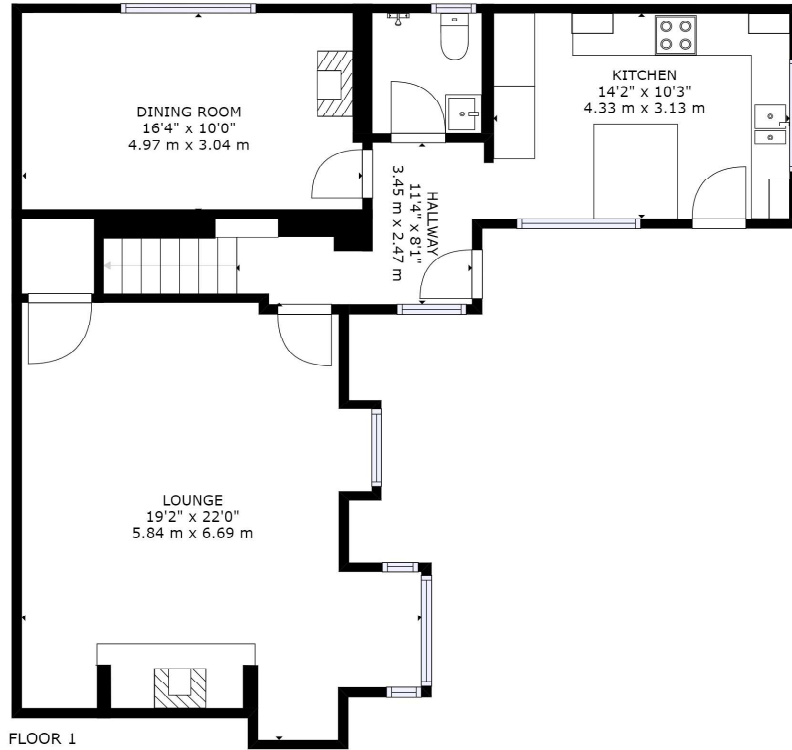




College Cottage
Martin, SP6 3LD
Guide Price £625,000





GROSS INTERNAL AREA
 FLOOR 1: 895 sq. ft., 83 m², FLOOR 2: 595 sq. ft., 55 m²
 TOTAL: 1490 sq. ft., 138 m²
 SIZES AND DIMENSIONS ARE APPROXIMATE. ACTUAL MAY VARY.





**GUIDE PRICE - £625,000
FREEHOLD**

Looking to relocate to the countryside and need quick and easy access to London? Look no further than this absolutely charming, totally refurbished, three bedroom semi-detached cottage positioned in the picturesque downland village of Martin.

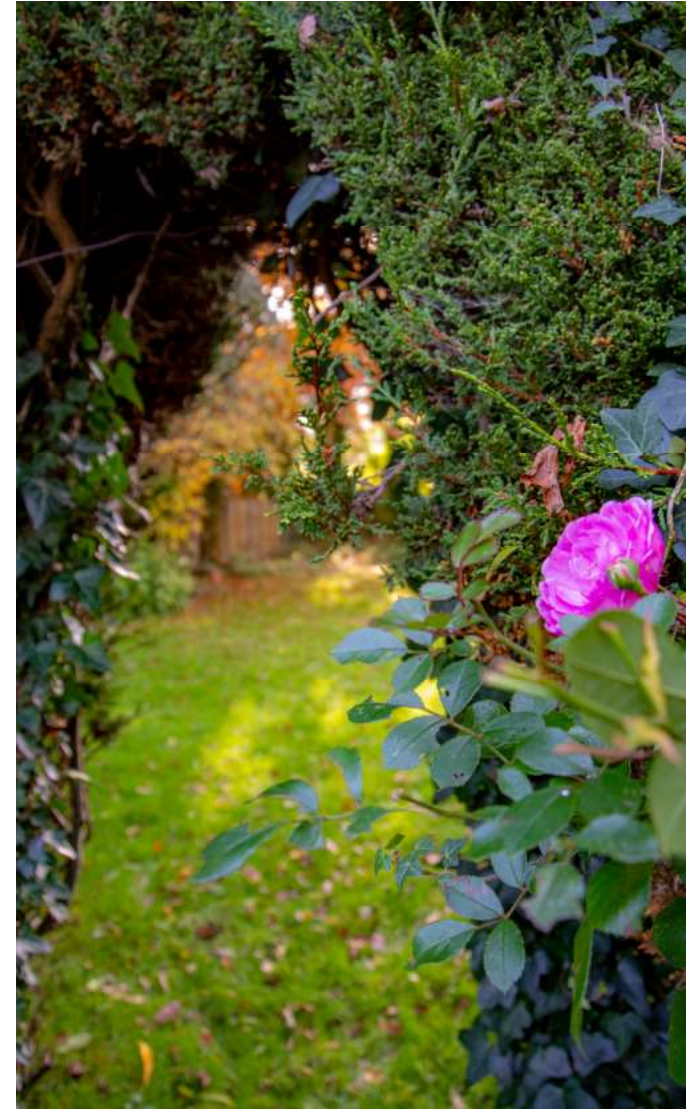
The property has been completely renovated by the current owners whilst retaining all its' wonderful original features.

Three Bedrooms | Stunning Interior
Full Of Character & Original Features
Very Large Garden | Off Road Parking
Situated In The Picturesque Downland
Village Of Martin

Two Bathrooms | Log Burner
Garage
Recently Installed Home Office/Summer-
house

EPC D
Council tax band F

01202 434365
ferndown@winkworth.co.uk



LOCATION

The picturesque village of Martin nestles within the rolling countryside of the Cranborne Chase, where a network of country paths and bridle ways access lovely walking and riding countryside across Martin Downs national trust. The active community is well supported by a village hall, which is home to a community shop, and a church, and the neighbouring village of Damerham (approx 3 miles) has a reputable primary school, garage and popular public house. The Avonside town of Fordingbridge (approx. 6 miles) has a range of health, educational, shopping and recreational services sufficient to cater for most day to day needs and the Cathedral City of Salisbury, which offers a broader range of facilities including reputable state and private schooling, is almost equidistant via the A354

Winkworth Ferndown

406 Ringwood Road, Ferndown, Dorset, BH22 9AU

01202 434365 | ferndown@winkworth.co.uk

winkworth.co.uk/ferndown

Winkworth