



## Chandos Road, NW2

O.I.E.O £620,000 *Leasehold*



A delightful two bedroom ground floor flat in a period conversion with private garden, offered in excellent condition and close to the array of amenities and transport links Willesden Green has to offer.

### KEY FEATURES

- TWO BEDROOMS
- GROUND FLOOR
- PRIVATE 60FT GARDEN
- CLOSE TO JUBILEE LINE
- SHORT WALK TO GLADSTONE PARK
- NO UPPER CHAIN
- POTENTIAL TO EXTEND (STPP & CONSENTS)



Kensal Rise & Queens Park

0208 960 4947 | [kensalrise@winkworth.co.uk](mailto:kensalrise@winkworth.co.uk)

**Winkworth**

for every step...





## DESCRIPTION

This lovely flat comprises of a stunning front facing reception room with high ceilings, period feature fire place, and large sash bay window. The hallway will lead you down to both bedrooms, with the bathroom and kitchen being located to the middle of the flat. An understairs cupboard and cellar makes for useful storage. Both bedrooms are good sizes, and the bathroom is a fully tiled three piece suite with modern fittings. The kitchen is modern with ample counter and storage space. There are two accesses to the garden – one from the kitchen, and another via the principle bedroom.

The garden is completely private, and at 60ft long, there is plenty of space with front patio and rear raised deck.

Perfect for garden furniture and BBQ etc. The main part of the garden is lawned with beds to each side.

Finally, the property also has further potential to be extended to the rear and in to the side return area (STPP and consents), similar to many other neighbouring properties to create additional bedrooms and open plan living spaces.





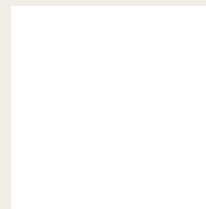


## LOCATION

Chandos Road is a charming and peaceful residential street, offering an ideal balance of serene living with excellent transport links and local amenities. This location is perfect for those seeking a quiet location without sacrificing accessibility to central London with a number of options - Jubilee Line, Thameslink and Nation Rail services.

Gladstone Park provides ample space for leisurely walks, sports, or relaxing in nature. The park offers beautiful views, playgrounds, and green fields, perfect for families and those who enjoy fresh air.

For more information, scan the QR code or visit the link below



<https://www.winkworth.co.uk/sale/property/KQP220278>

Where no figures are shown, we have been unable to ascertain the information. All figures that are shown were correct at the time of printing.

## MATERIAL INFO

**Tenure:** Leasehold

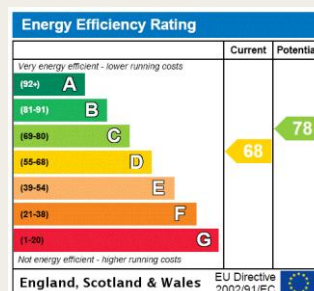
**Term:** 0 year and 0 months

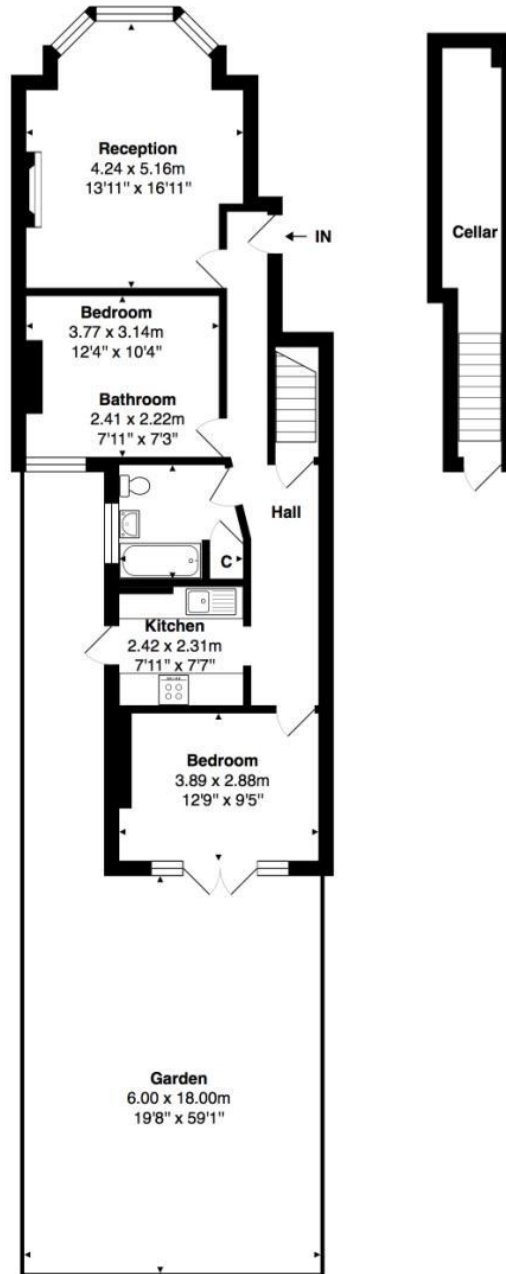
**Service Charge:** £0 per annum

**Ground Rent:** £ 125 Annually (subject to increase)

**Council Tax Band:** D

**EPC rating:** D





Total Area: 69.4 m<sup>2</sup> ... 747 ft<sup>2</sup> (excluding garden, cellar)  
All measurements are approximate and for display purposes only

Kensal Rise & Queens Park

0208 960 4947 | [kensalrise@winkworth.co.uk](mailto:kensalrise@winkworth.co.uk)

**Winkworth**

for every step...

Winkworth wishes to inform prospective buyers and tenants that these particulars are a guide and act as information only. All our details are given in good faith and believed to be correct at the time of printing but they don't form part of an offer or contract. No Winkworth employee has authority to make or give any representation or warranty in relation to this property. All fixtures and fittings, whether fitted or not are deemed removable by the vendor unless stated otherwise and room sizes are measured between internal wall surfaces, including furnishings.