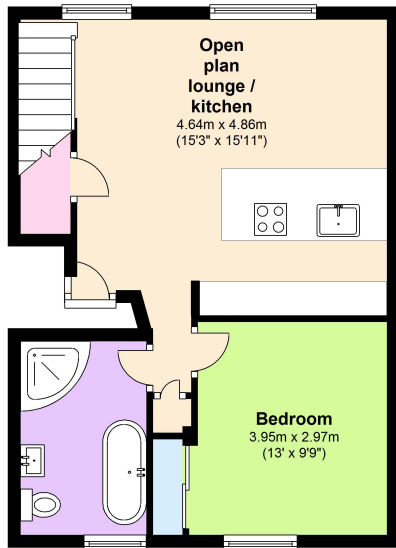


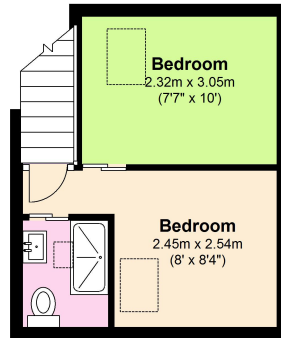
Second Floor

Approx. 44.3 sq. metres (477.1 sq. feet)



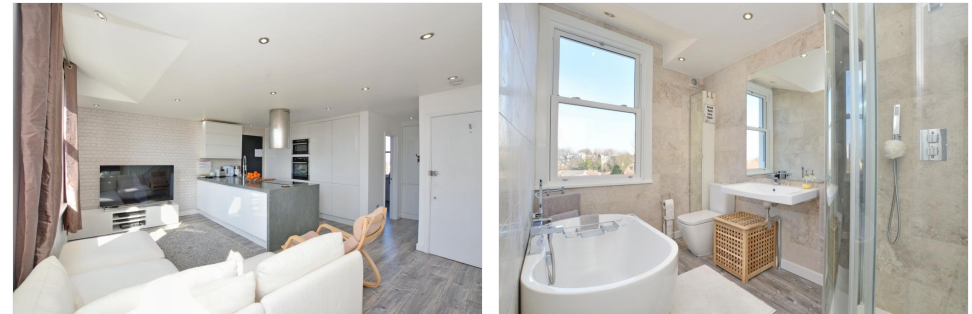
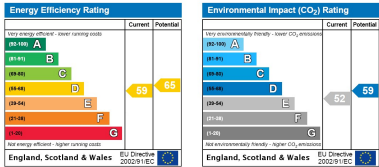
Third Floor

Approx. 17.7 sq. metres (191.0 sq. feet)



Total area: approx. 62.1 sq. metres (668.0 sq. feet)

This floorplan is for illustration purposes only and is not to scale. The position and size of doors, windows, appliances and other features are approximate.



CHARLTON CHURCH LANE, CHARLTON, LONDON, SE7 7AA
GUIDE PRICE £425,000-£445,000 LEASEHOLD

A GORGEOUS AND VASTLY IMPROVED TWO/THREE BEDROOM SPLIT LEVEL CONVERSION LOCATED ON THE TOP TWO FLOORS OF THIS BEAUTIFUL SEMI-DETACHED VICTORIAN HOUSE.

Blackheath | 0208 8520999 | blackheath@winkworth.co.uk



DESCRIPTION:

The property has been extensively refurbished to a very high standard with under floor heating and double glazed windows. The accommodation comprising; a stunning open plan living room/kitchen with a very modern fitted kitchen with integrated appliances, a double bedroom with built in wardrobe and a fantastic luxury modern bathroom with freestanding bath and separate shower. The loft has been converted and currently provides two smaller bedrooms but could easily revert to a large second double bedroom and a modern shower room. The property further benefits from a large communal garden and a 125 year lease.

This is a truly beautiful home and your immediate viewing is essential.

Charlton Village has plenty of local shops and daily conveniences. Charlton mainline rail station is very close by, along with the new Marks and Spencer, Sainsbury's and the O2. The new Crossrail service, due for completion at the end of 2021 will also be within close proximity. Blackheath Village, with its array of bars, restaurants and boutiques, and Historic Greenwich are both within easy reach.



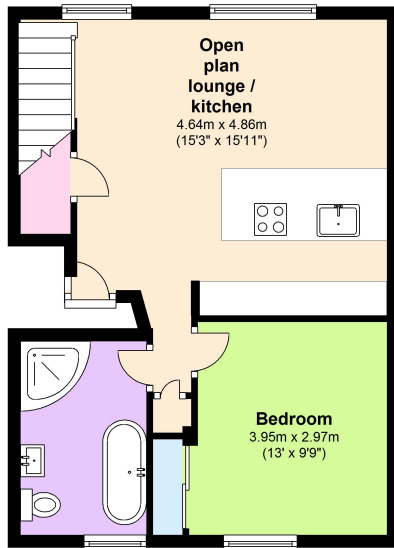
AT A GLANCE

- stunning period conversion
- split level
- two/three bedrooms
- two bathrooms
- excellent condition
- new 125 year lease
- private section of garden



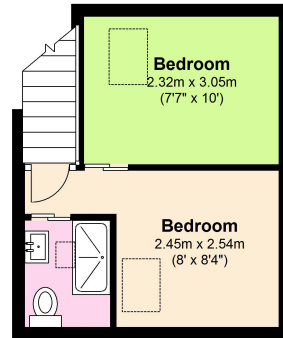
Second Floor

Approx. 44.3 sq. metres (477.1 sq. feet)



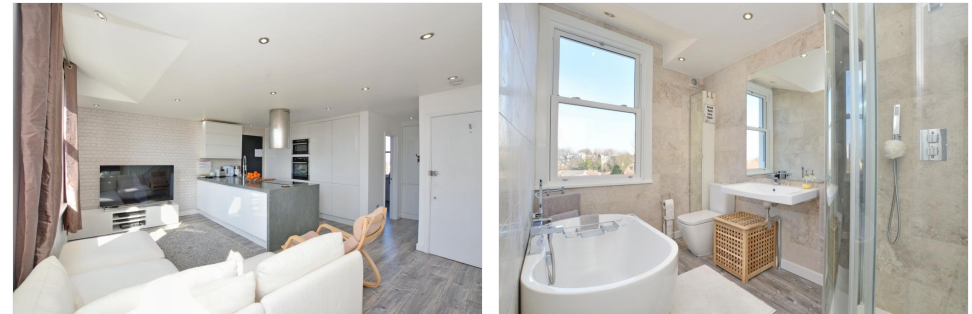
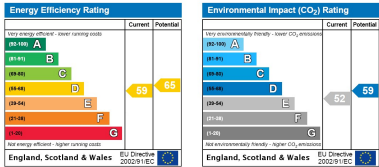
Third Floor

Approx. 17.7 sq. metres (191.0 sq. feet)



Total area: approx. 62.1 sq. metres (668.0 sq. feet)

This floorplan is for illustration purposes only and is not to scale. The position and size of doors, windows, appliances and other features are approximate.



CHARLTON CHURCH LANE, CHARLTON, LONDON, SE7 7AA
GUIDE PRICE £425,000-£445,000 LEASEHOLD

A GORGEOUS AND VASTLY IMPROVED TWO/THREE BEDROOM SPLIT LEVEL CONVERSION LOCATED ON THE TOP TWO FLOORS OF THIS BEAUTIFUL SEMI-DETACHED VICTORIAN HOUSE.

Blackheath | 0208 8520999 | blackheath@winkworth.co.uk



DESCRIPTION:

The property has been extensively refurbished to a very high standard with under floor heating and double glazed windows. The accommodation comprising; a stunning open plan living room/kitchen with a very modern fitted kitchen with integrated appliances, a double bedroom with built in wardrobe and a fantastic luxury modern bathroom with freestanding bath and separate shower. The loft has been converted and currently provides two smaller bedrooms but could easily revert to a large second double bedroom and a modern shower room. The property further benefits from a large communal garden and a 125 year lease.

This is a truly beautiful home and your immediate viewing is essential.

Charlton Village has plenty of local shops and daily conveniences. Charlton mainline rail station is very close by, along with the new Marks and Spencer, Sainsbury's and the O2. The new Crossrail service, due for completion at the end of 2021 will also be within close proximity. Blackheath Village, with its array of bars, restaurants and boutiques, and Historic Greenwich are both within easy reach.



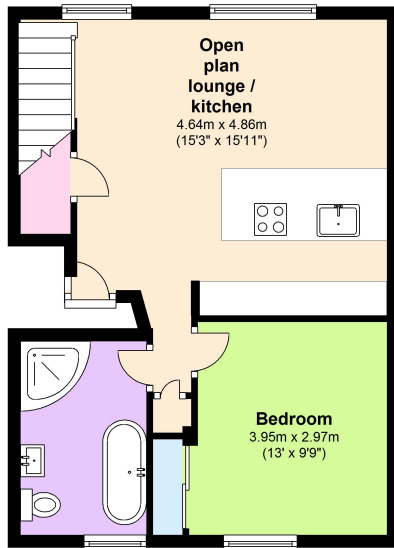
AT A GLANCE

- stunning period conversion
- split level
- two/three bedrooms
- two bathrooms
- excellent condition
- new 125 year lease
- private section of garden



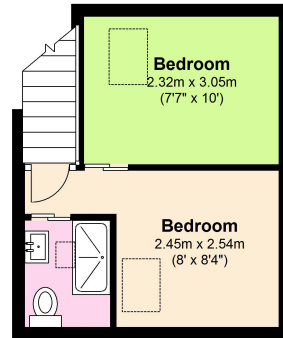
Second Floor

Approx. 44.3 sq. metres (477.1 sq. feet)



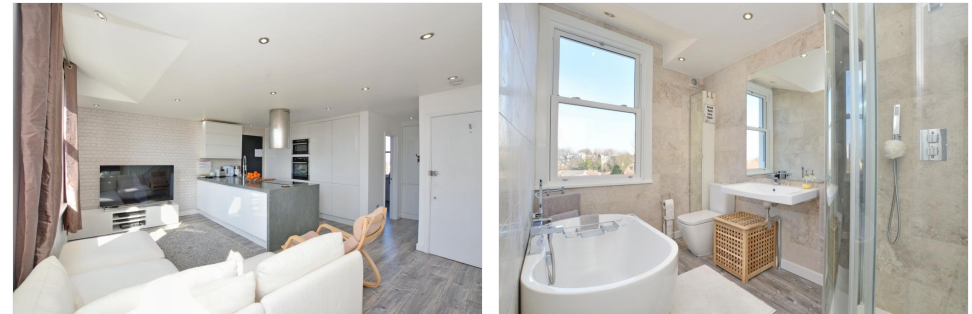
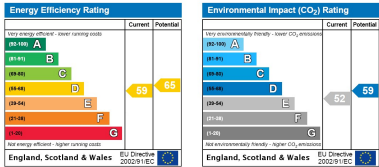
Third Floor

Approx. 17.7 sq. metres (191.0 sq. feet)



Total area: approx. 62.1 sq. metres (668.0 sq. feet)

This floorplan is for illustration purposes only and is not to scale. The position and size of doors, windows, appliances and other features are approximate.



CHARLTON CHURCH LANE, CHARLTON, LONDON, SE7 7AA
GUIDE PRICE £425,000-£445,000 LEASEHOLD

A GORGEOUS AND VASTLY IMPROVED TWO/THREE BEDROOM SPLIT LEVEL CONVERSION LOCATED ON THE TOP TWO FLOORS OF THIS BEAUTIFUL SEMI-DETACHED VICTORIAN HOUSE.

Blackheath | 0208 8520999 | blackheath@winkworth.co.uk



DESCRIPTION:

The property has been extensively refurbished to a very high standard with under floor heating and double glazed windows. The accommodation comprising; a stunning open plan living room/kitchen with a very modern fitted kitchen with integrated appliances, a double bedroom with built in wardrobe and a fantastic luxury modern bathroom with freestanding bath and separate shower. The loft has been converted and currently provides two smaller bedrooms but could easily revert to a large second double bedroom and a modern shower room. The property further benefits from a large communal garden and a 125 year lease.

This is a truly beautiful home and your immediate viewing is essential.

Charlton Village has plenty of local shops and daily conveniences. Charlton mainline rail station is very close by, along with the new Marks and Spencer, Sainsbury's and the O2. The new Crossrail service, due for completion at the end of 2021 will also be within close proximity. Blackheath Village, with its array of bars, restaurants and boutiques, and Historic Greenwich are both within easy reach.



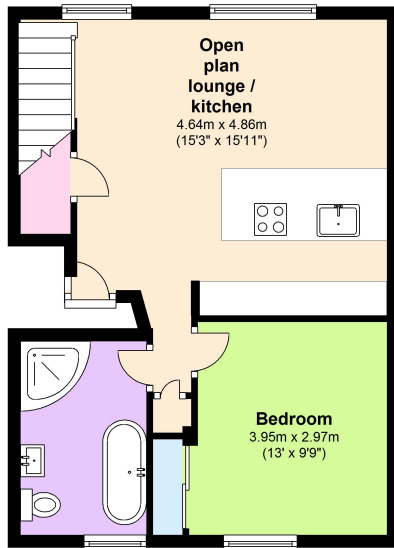
AT A GLANCE

- stunning period conversion
- split level
- two/three bedrooms
- two bathrooms
- excellent condition
- new 125 year lease
- private section of garden



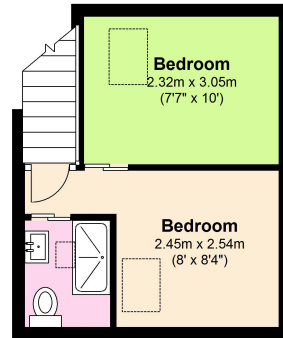
Second Floor

Approx. 44.3 sq. metres (477.1 sq. feet)



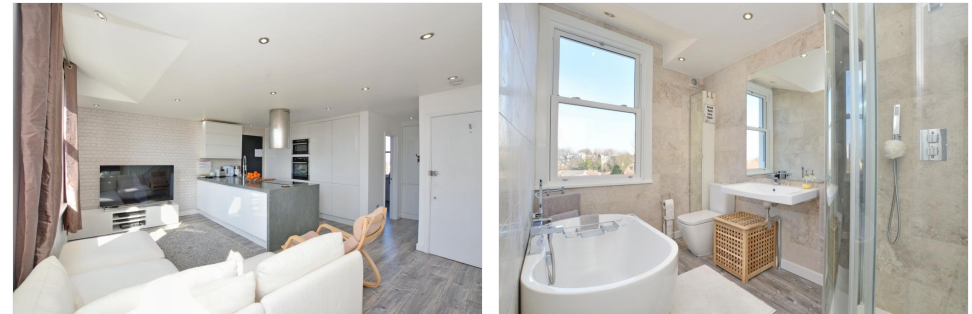
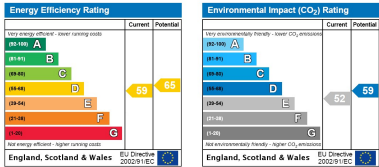
Third Floor

Approx. 17.7 sq. metres (191.0 sq. feet)



Total area: approx. 62.1 sq. metres (668.0 sq. feet)

This floorplan is for illustration purposes only and is not to scale. The position and size of doors, windows, appliances and other features are approximate.



CHARLTON CHURCH LANE, CHARLTON, LONDON, SE7 7AA
GUIDE PRICE £425,000-£445,000 LEASEHOLD

A GORGEOUS AND VASTLY IMPROVED TWO/THREE BEDROOM SPLIT LEVEL CONVERSION LOCATED ON THE TOP TWO FLOORS OF THIS BEAUTIFUL SEMI-DETACHED VICTORIAN HOUSE.

Blackheath | 0208 8520999 | blackheath@winkworth.co.uk



DESCRIPTION:

The property has been extensively refurbished to a very high standard with under floor heating and double glazed windows. The accommodation comprising; a stunning open plan living room/kitchen with a very modern fitted kitchen with integrated appliances, a double bedroom with built in wardrobe and a fantastic luxury modern bathroom with freestanding bath and separate shower. The loft has been converted and currently provides two smaller bedrooms but could easily revert to a large second double bedroom and a modern shower room. The property further benefits from a large communal garden and a 125 year lease.

This is a truly beautiful home and your immediate viewing is essential.

Charlton Village has plenty of local shops and daily conveniences. Charlton mainline rail station is very close by, along with the new Marks and Spencer, Sainsbury's and the O2. The new Crossrail service, due for completion at the end of 2021 will also be within close proximity. Blackheath Village, with its array of bars, restaurants and boutiques, and Historic Greenwich are both within easy reach.



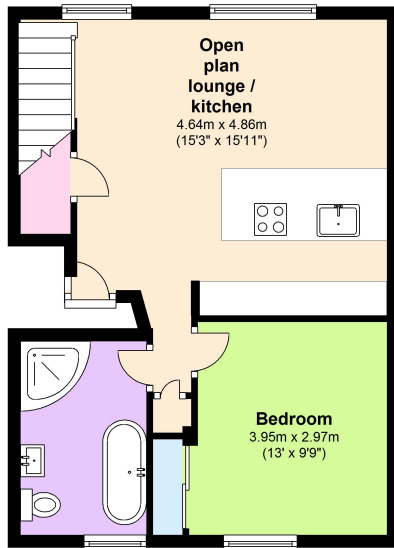
AT A GLANCE

- stunning period conversion
- split level
- two/three bedrooms
- two bathrooms
- excellent condition
- new 125 year lease
- private section of garden



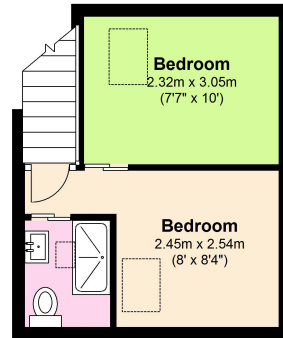
Second Floor

Approx. 44.3 sq. metres (477.1 sq. feet)



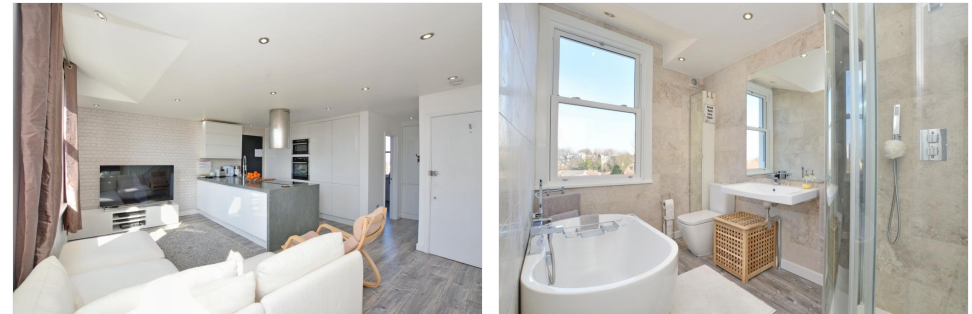
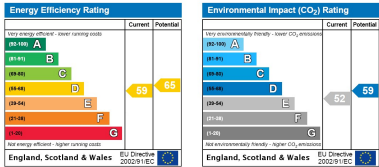
Third Floor

Approx. 17.7 sq. metres (191.0 sq. feet)



Total area: approx. 62.1 sq. metres (668.0 sq. feet)

This floorplan is for illustration purposes only and is not to scale. The position and size of doors, windows, appliances and other features are approximate.



CHARLTON CHURCH LANE, CHARLTON, LONDON, SE7 7AA
GUIDE PRICE £425,000-£445,000 LEASEHOLD

A GORGEOUS AND VASTLY IMPROVED TWO/THREE BEDROOM SPLIT LEVEL CONVERSION LOCATED ON THE TOP TWO FLOORS OF THIS BEAUTIFUL SEMI-DETACHED VICTORIAN HOUSE.

Blackheath | 0208 8520999 | blackheath@winkworth.co.uk



DESCRIPTION:

The property has been extensively refurbished to a very high standard with under floor heating and double glazed windows. The accommodation comprising; a stunning open plan living room/kitchen with a very modern fitted kitchen with integrated appliances, a double bedroom with built in wardrobe and a fantastic luxury modern bathroom with freestanding bath and separate shower. The loft has been converted and currently provides two smaller bedrooms but could easily revert to a large second double bedroom and a modern shower room. The property further benefits from a large communal garden and a 125 year lease.

This is a truly beautiful home and your immediate viewing is essential.

Charlton Village has plenty of local shops and daily conveniences. Charlton mainline rail station is very close by, along with the new Marks and Spencer, Sainsbury's and the O2. The new Crossrail service, due for completion at the end of 2021 will also be within close proximity. Blackheath Village, with its array of bars, restaurants and boutiques, and Historic Greenwich are both within easy reach.



AT A GLANCE

- stunning period conversion
- split level
- two/three bedrooms
- two bathrooms
- excellent condition
- new 125 year lease
- private section of garden

