



MYDDLETON HALL, ALMEIDA STREET, LONDON, N1
£550,000 LEASEHOLD

A BEAUTIFUL, ONE DOUBLE BEDROOM, FIRST FLOOR APARTMENT SET IN THE HEART OF ISLINGTON, N1.

Islington | 0207 354 2480 | islington@winkworth.co.uk

Winkworth

winkworth.co.uk

See things differently



DESCRIPTION:

A stunning, one double bedroom apartment positioned on the first floor of this former music hall in heart of Islington. Laterally set and standing at 522sqft, the property is tastefully decorated inside and allows for an abundance of natural light to pour into every room. A spacious, open plan living room and kitchen includes ample dining space, with a gorgeous, Crittall style window showing off the former music hall in all it's glory. The bedroom is a genuine double and offers plenty of room for cupboards and a chest of draws; the bathroom is sweetly tucked away too and has modern fixtures. A cleverly designed entrance hall makes the perfect storage area, while off the hallway is another useful cupboard.

Almedia Street is tucked directly off Upper Street so gives a wonderfully quiet, yet convenient location in the heart of Islington. A brilliant selection of popular restaurants such as Ottolenghi, Bellanger and Fredericks are within a short distance, and run alongside a huge selection of boutique shops including the new Islington Square development.

An array of transport links are at hand for effortless access across London and beyond. A variety of bus routes are located on Upper Street and Essex Road offering access to the City and West End, whilst both Angel and Highbury and Islington stations provide underground links alongside overground services from Essex Road to Moorgate.

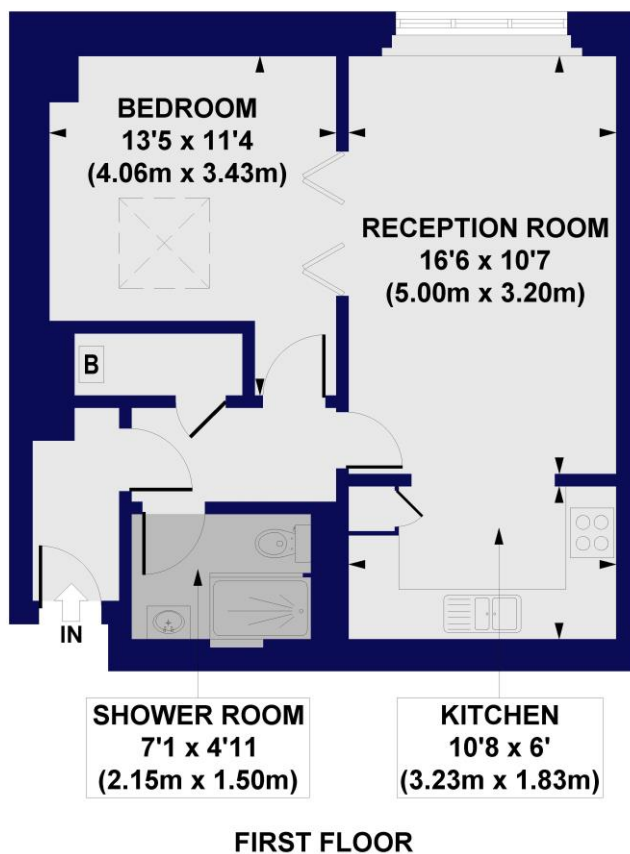
Winkworth



Winkworth

Myddleton Hall, Almeida Street, N1

Approx. Gross Internal Floor Area 522 sq. ft / 48.50 sq. m (Including Limited Use Area)



All measurements of walls, doors, windows, fittings and appliances, including their size and location, are shown as standard sizes and do not constitute any warranty or representation by the seller, their agent or CP Creative. Any intending purchaser must satisfy himself by inspection or otherwise as to the correctness of the information contained in these plans. This plan is for illustrative purposes only and should be used as such by any prospective purchasers.

Winkworth

This floorplan is for illustration purposes only and is not to scale. The position and size of doors, windows, appliances and other features are approximate.

Islington | 0207 354 2480 | islington@winkworth.co.uk

Winkworth

winkworth.co.uk

See things differently

Winkworth wishes to inform prospective buyers and tenants that these particulars are a guide and act as information only. All our details are given in good faith and believed to be correct at the time of printing but they don't form part of an offer or contract. No Winkworth employee has authority to make or give any representation or warranty in relation to this property. All fixtures and fittings, whether fitted or not are deemed removable by the vendor unless stated otherwise and room sizes are measured between internal wall surfaces, including furnishings.