



May Tree Close, Winchester, Hampshire, SO22 4JF

Winkworth



May Tree Close, Winchester, Hampshire, SO22 4JF

Superb End of Terrace House with Well-Presented Accommodation

This bright, well-presented property is situated in the popular Badger Farm area, close to good local amenities. The house is nicely positioned at the end of a terrace in a close of similar properties and is a short distance from a supermarket and doctors' surgery, with lots of excellent local walks nearby. Other advantages include a low-maintenance garden at the rear of the property and a garage in a nearby block.

The front door leads through to the welcoming entrance hall. The open-plan kitchen/sitting room is a wonderfully light space extending the full length of the property, with large bifold doors at the rear and a useful understairs storage cupboard. The fitted kitchen is sleek and well-appointed with a smart breakfast bar and ample units providing plenty of cupboard space. Integrated appliances include double oven and microwave combi oven, induction hob, ducted extractor and fridge/freezer, with space for further appliances.

Stairs rise to the first floor where the landing gives access to three bedrooms. The main double bedroom is an excellent size and has built-in storage. All bedrooms are served by the modern family bathroom with bath and shower over. A utility/store area runs alongside the property with doors either end, providing useful extra storage space and access to the garden without going through the main house.

The rear garden is low maintenance with a patio directly adjacent to the house and the remainder laid to lawn. The garage is located close by.



May Tree Close, Winchester, Hampshire, SO22 4JF

Directions

From our office in Southgate Street proceed in a southerly direction along St Cross Road. Turn right at the roundabout, signposted Badger Farm, and proceed along Badger Farm Road. At the next round about take the third exit onto Meadow Way. Turn left onto May Tree Close following the road to the end, then turn left again onto May Tree Close and take the first right into May Tree Close and finally left again into May Tree Close and the property can be found at the end of the road.

Location

May Tree Close is conveniently located in the popular Badger Farm area of Winchester with easy access to the M3. Sainsbury's superstore is close by and there are excellent bus services into the centre of Winchester with its railway station (links to London Waterloo in approx. 60 minutes), High Street shops, boutiques, library, coffee shops, public houses, restaurants, theatre, cinema, museums and, of course, the City's historic Cathedral. In the catchment for Kings' secondary school.

Tenure: Freehold

Services

Mains gas, electricity, water and drainage

Winchester

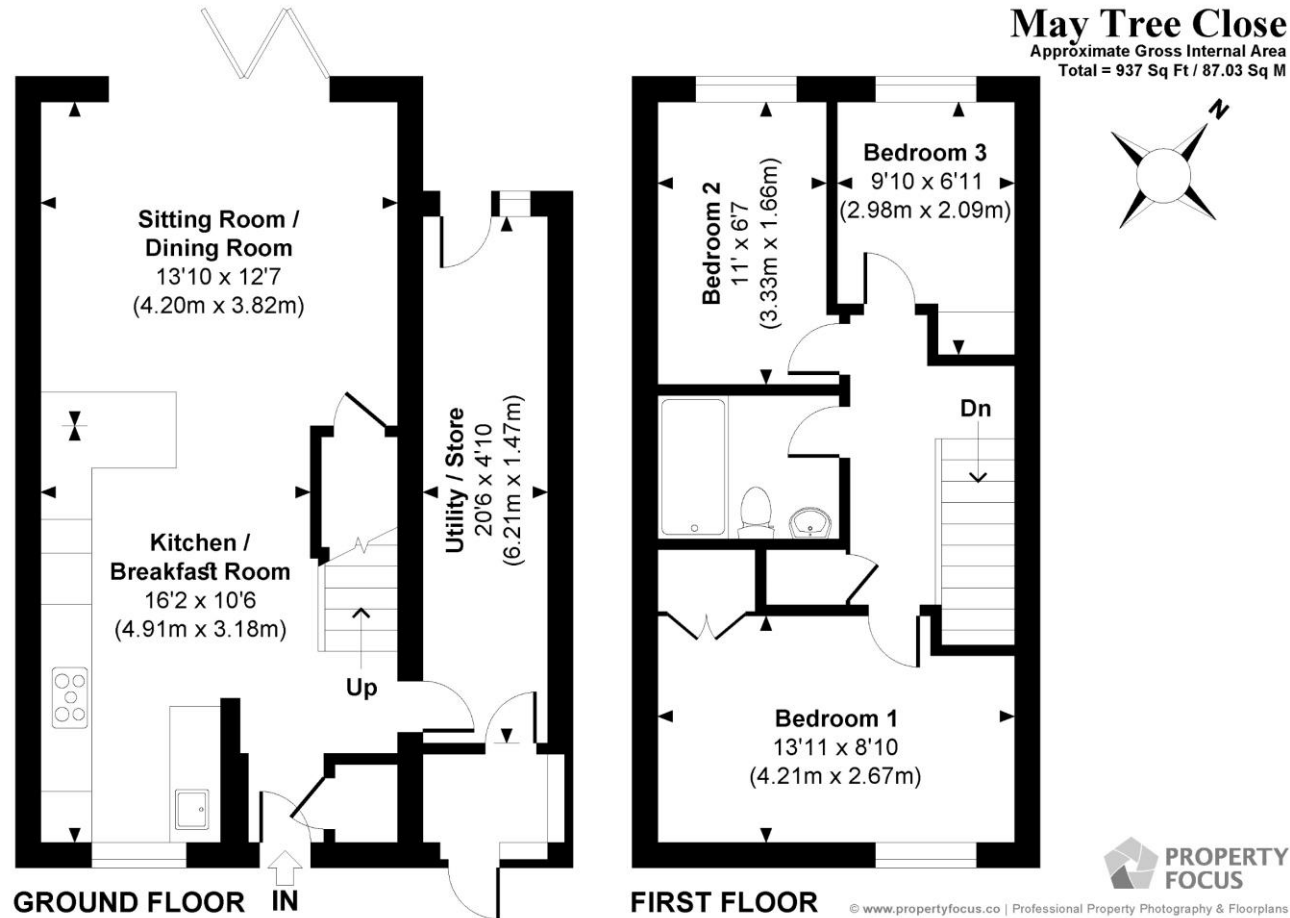
Council tax band: C

EPC rating: C

Viewings

Strictly by appointment with Winkworth Winchester Office

Winkworth.co.uk/winchester



Winkworth Winchester

2 Black Swan Buildings, Southgate Street, Winchester, SO23 9DT
01962 866 777 | winchester@winkworth.co.uk

Winkworth Country House Department

11 Berkeley Street, Mayfair, London, W1J 8DS
020 7871 0589 | countryhouse@winkworth.co.uk

Winkworth

See things differently