



WESTMORELAND TERRACE, SW1V

£1,395,000

SHARE OF FREEHOLD

At a glance...

- Three Bedrooms
- Two Bathrooms
- Split-level Maisonette
- Roof Terrace
- Excellent Condition
- Council Tax Band: F

Winkworth

for every step...



Energy Efficiency Rating		
	Current	Potential
Very energy efficient - lower running costs		
(92+) A		
(81-91) B		85
(69-80) C		
(55-68) D	63	
(39-54) E		
(21-38) F		
(1-20) G		
Not energy efficient - higher running costs		
England, Scotland & Wales		EU Directive 2002/91/EC

WESTMORELAND TERRACE, SW1V

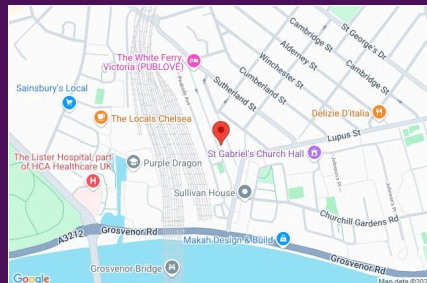
£1,395,000

SHARE OF FREEHOLD

Entered via its own front door this large maisonette offers lovely, bright accommodation over three different levels.

On the 1st floor is a large open reception room and dining area leading to the smart, modern kitchen. Upstairs on the second floor are two good size bedrooms and a family bathroom and, on the top floor, a lovely master bedroom with impressive ensuite bathroom. Off this floor is also a nice terrace which gets great sunlight.

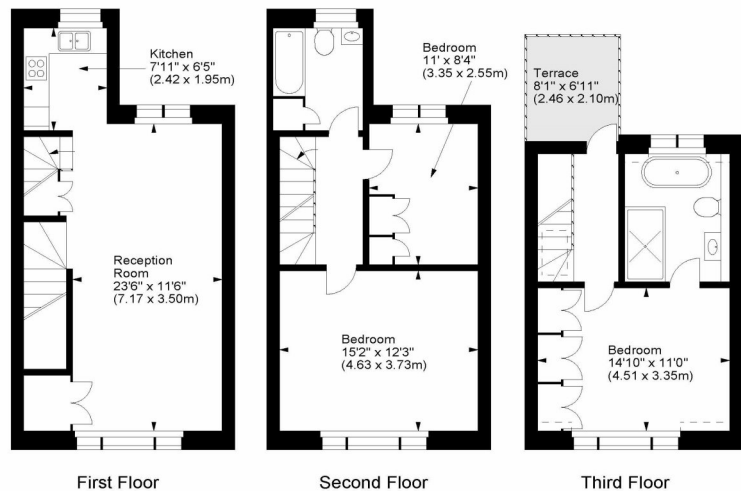
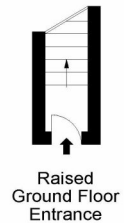
The property owns a share in the freehold of the building and is beautifully presented, ready for an incoming purchaser to move in.



winkworth wishes to inform prospective buyers and tenants that these particulars are a guide and act as information only. All our details are given in good faith and believed to be correct at the time of printing but they don't form part of an offer or contract. No winkworth employee has authority to make or give any representation or warranty in relation to this property. All fixtures and fittings, whether fitted or not are deemed removable by the vendor unless stated otherwise and room sizes are measured between internal wall surfaces - including fireplaces.

Westmoreland Terrace, SW1

Approx. Gross Internal Area
1163 Sq Ft - 108.04 Sq M



For illustration purposes only. Not to scale.
All measurements are taken and shown at floor level.
www.r3photography.co.uk © Photography / Floor Plans / Lease Plans / EPCs



Pimlico & Westminster

020 7828 1786

pimlico@winkworth.co.uk

winkworth.co.uk/pimlico-westminster

Winkworth

for every step...