



The Arbor, London, NW6

£500,000 *Leasehold*



This fantastic private gated one-bedroom, one-bathroom property in NW6 is the perfect combination of luxury living whilst being in a central, sought-after location. This stunning Parkside property, built only five years ago, has been designed with high-spec modern and stylish finishes throughout, featuring a fully equipped kitchen with Siemens appliances and an open-plan living area with ample natural light, boasting views of the park from one of the property's two balconies. The generous-sized bathroom is equipped with contemporary finishes, including a bath and shower, and the double bedroom comes equipped with spacious built-in wardrobes, alongside three storage spaces throughout the property.

The property is 0.5 miles away from the buzzy West End Lane and Queen's Park, with many shops, restaurants, and cafes. This property has excellent public transportation options, with the Jubilee Line (0.4m), London Overground (0.2m) to Euston, Clapham Junction, and Richmond, West Hampstead Thameslink (0.5m) to the City, Gatwick, and Luton Airport, and lastly the Bakerloo Line (0.7m).



Winkworth West Hampstead

020 7483 7602 | westhampstead@winkworth.co.uk

Winkworth

for every step...



KEY FEATURES

- Double Bedroom
- Family Bathroom
- Open Plan Reception Room / Kitchen
- Balcony
- Communal Gardens



MATERIAL INFO

Tenure: Leasehold

Lease Expiry Date: 24/06/3019

Service Charge: £2,400 per annum

Council Tax Band: C

EPC rating: B





Score	Energy rating	Current	Potential
92+	A		
81-91	B	81 B	81 B
69-80	C		
55-68	D		
39-54	E		
21-38	F		
1-20	G		

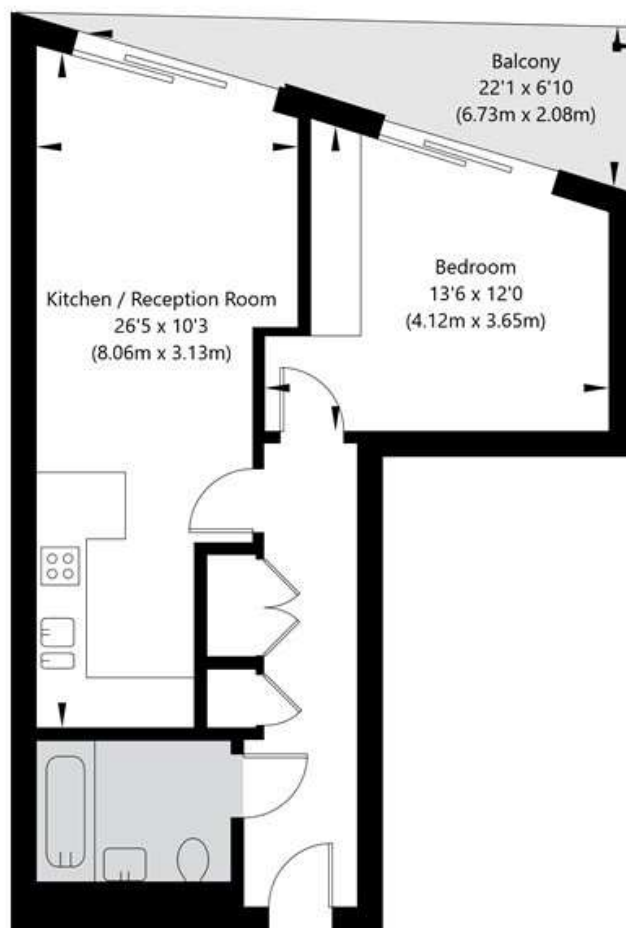
For more information, scan the QR code or visit the link below



<https://www.winkworth.co.uk/sale/property/WHP250196>

The Arbor, London NW6 2BS

First Floor
GROSS INTERNAL FLOOR AREA
APPROX. 46.79 SQ M / 504 SQ FT



APPROXIMATE GROSS INTERNAL FLOOR AREA 46.79 SQ M / 504 SQ FT
THIS FLOOR PLAN IS FOR ILLUSTRATIVE PURPOSES ONLY AND
SHOULD BE USED FOR THIS PURPOSE BY PROSPECTIVE APPLICANTS AS ITS NOT TO SCALE.

(c) AMBERSHORE PIX LIMITED / PHOTO - VIDEO - FLOOR PLANS / 0800 999 1577 / WWW.AMBERSHOREPIX.CO.UK

Where no figures are shown, we have been unable to ascertain the information. All figures that are shown were correct at the time of printing.

Winkworth West Hampstead

020 7483 7602 | westhampstead@winkworth.co.uk

Winkworth

for every step...

Winkworth wishes to inform prospective buyers and tenants that these particulars are a guide and act as information only. All our details are given in good faith and believed to be correct at the time of printing but they don't form part of an offer or contract. No Winkworth employee has authority to make or give any representation or warranty in relation to this property. All fixtures and fittings, whether fitted or not are deemed removable by the vendor unless stated otherwise and room sizes are measured between internal wall surfaces, including furnishings.