



BLACKHEATH PARK, BLACKHEATH, SE3 9SH
£389,995 LEASEHOLD

WITHIN THIS PRESTIGIOUS DEVELOPMENT ON THE CATOR ESTATE'S FINEST ROAD AND WITHIN A SHORT WALK OF THE HEATH AND BLACKHEATH VILLAGE, IS THIS SPACIOUS ONE DOUBLE BEDROOM APARTMENT WITH A GARAGE, LARGE COMMUNAL GARDENS AND IS SOLD CHAIN FREE.

Blackheath | 0208 8520999 | blackheath@winkworth.co.uk

Winkworth



DESCRIPTION:

The property has been a very successful buy to let and although has been well maintained does offer scope to enhance.

Found on the first floor, the accommodation briefly comprises; a large 15'6 x 12'0 living room, a separate kitchen, 15'6 x 10'0 double bedroom, bathroom and good size storage cupboard within the hallway. The apartment is in a privileged position within the development with views from every room onto the fantastic and vast communal gardens. The property also has a private garage and off street parking.

This is a wonderful apartment and your immediate viewing is essential. There is no chain.

Bernersmede is a highly sought after development built circa 1965 and set on Blackheath Park, the flagship road on the prestigious private Cator Estate. The Ofsted outstanding Brooklands Primary School is within a few minutes' walk and the house is located just 0.3 miles from Blackheath Village with its array of bars, restaurants, boutique shops and mainline station. Trains from Blackheath to London Bridge take approximately 10 minutes, and approximately 25 minutes to Victoria.

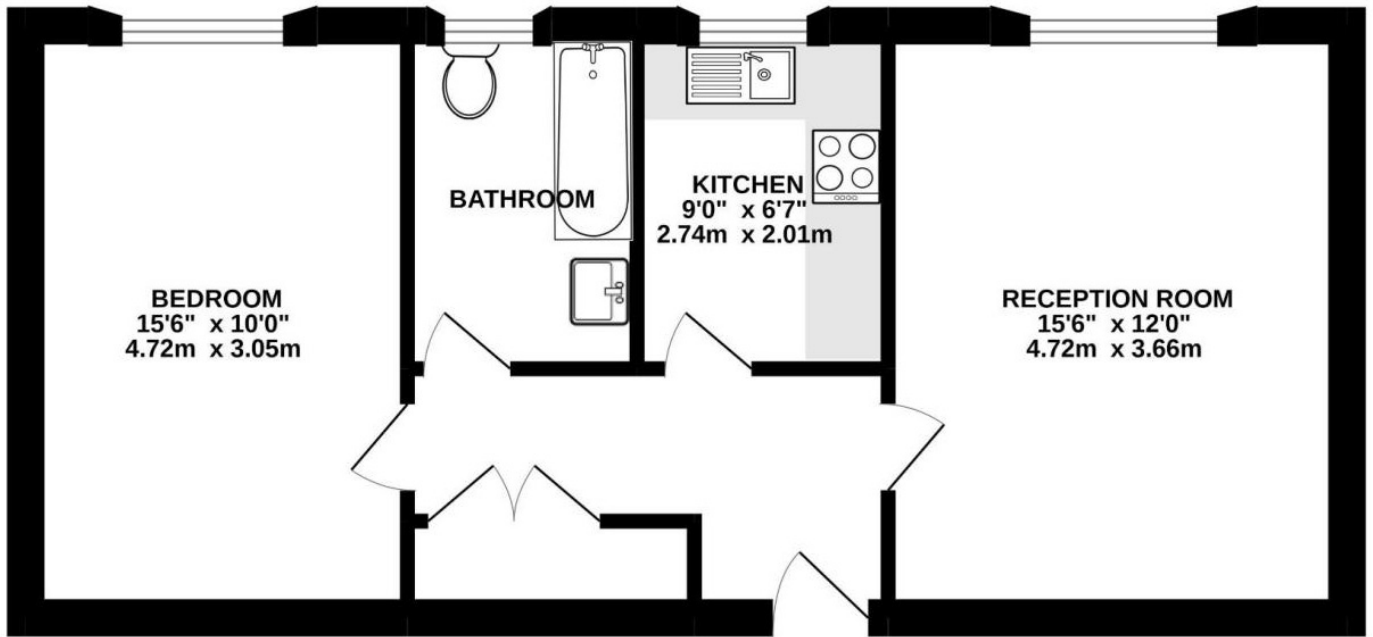
AT A GLANCE

- superb apartment
- built circa 1965
- first floor
- one double bedroom
- good condition
- chain free
- off street parking
- garage
- large communal garden
- prestigious location





First Floor



Total approx floor area 538 sq.ft (50 sq.m)

This floorplan is for illustration purposes only and is not to scale. The position and size of doors, windows, appliances and other features are approximate. Any lease and service charge details have been provided by the vendor. Any interest party should have these checked by a solicitor as part of the purchase process.

