



## 9-10 High Street

Hitchin, Hertfordshire, SG5 1BH

### Impressive Retail / Commercial Space.

**4,000 to 25,000 sq ft**  
(371.61 to 2,322.58 sq m)

- Prime High Street location.
- Flexible Retail & Commercial Spaces.
- Flexible Terms
- Busy Market Town.
- Close to Hitchin Station.

# 9-10 High Street, Hitchin, Hertfordshire, SG5 1BH

## Summary

Available Size	4,000 to 25,000 sq ft
Rent	Rent on application
Business Rates	Upon Enquiry
EPC Rating	C (60)

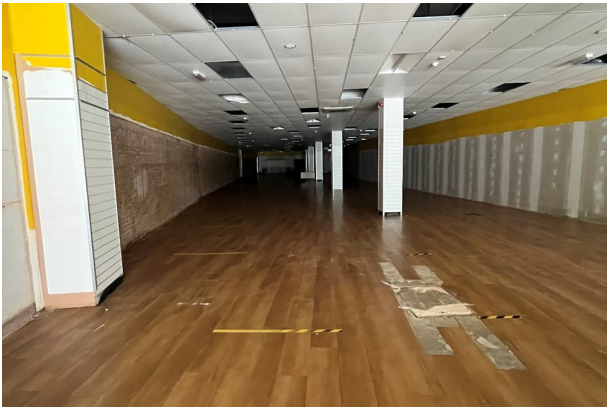
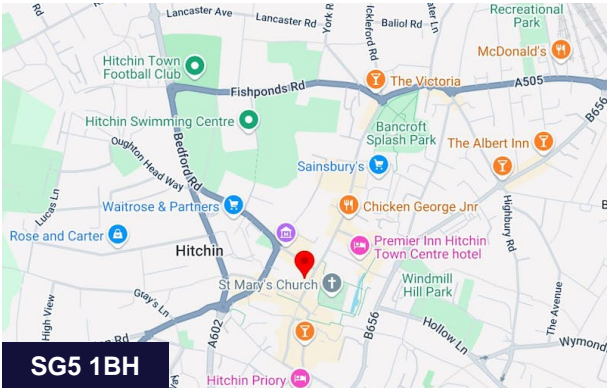
## Description

A set of flexible first and ground floor commercial spaces with excellent accessibility in the heart of Hitchin Town Centre.

This range of self-contained commercial spaces is available on flexible terms and would provide an excellent opportunity to both retailers, storage companies, gym operators and office space requirements seeking a prime Town Centre location.

## Location

These commercial spaces are located on the High Street within Hitchin, a good retail location. Hitchin is a busy north Hertfordshire market town with a population of 30,851 as at the 2001 Census. The town is approximately 36 miles north of central London and lies on the A505 approximately 3 miles to the west of Junction 8 of the A1(M) and within 25 minutes drive of the M25, thus providing fast and easy access to central London and the national motorway link. The M1 (Junction 10) at Luton is approximately 20 minutes driving time away.



## Viewing & Further Information



**Adam Stackhouse**

07817 004082 | 020 7355 0285  
astackhouse@winkworth.co.uk



**Chris Ryan**

07385 413368 | 020 7355 0285  
cryan@winkworth.co.uk

The above information contained within this email is sent subject to contract. These particulars are for general information only and do not constitute any part of an offer or contract. All statements contained therein are made without responsibility on the part of the vendors or lessors and are not to be relied upon as statement or representation of fact. Intending purchasers or lessees must satisfy themselves, by inspection, or otherwise, as to the correctness of each of the statements of dimensions contained in these particulars. Generated on 11/06/2025