



**SKENE HOUSE, 13 SWALLOWFIELD ROAD, ARBORFIELD, READING, RG2 9JR
£665,000 FREEHOLD**

A THREE STOREY DETACHED FAMILY HOME LOCATED ON A DESIRABLE ROAD WITHIN THE SEMI RURAL VILLAGE OF ARBORFIELD PROVIDING 5 BEDROOMS AND 3 RECEPTION AREAS.

Winkworth

Wokingham | 01189 072777 | wokingham@winkworth.co.uk

for every step...

winkworth.co.uk



DESCRIPTION:

The property provides spacious and versatile accommodation over 3 floors that comprises reception hall with cloakroom, lounge, recently refitted kitchen/family/dining, 4 first floor bedrooms, bathroom and en-suite shower room, a further 2nd floor bedroom and study/bedroom 6 together with another shower room.

Externally the property provides a very pleasant south facing garden, enlarged garage to the rear with a double length driveway.

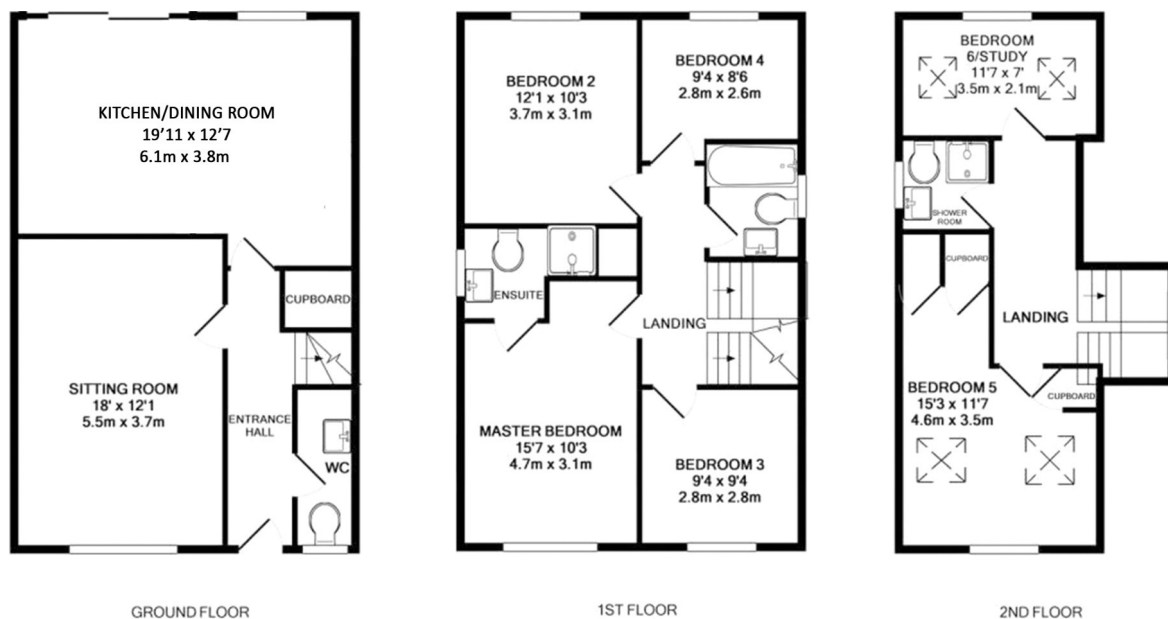
The location provides walking distance to the sought after Coombes Infant and numerous secondary schools are available including Bohunt in Arborfield.

Further benefits to the location include convenient access into Wokingham and Reading, M3 and M4, A329 and with village store, Public House, Garden centre and Co-op and newly opened Sainsburys in Arborfield Green.

AT A GLANCE

- Popular Berkshire village location
- 3 storey detached family home
- 5 bedrooms and study/bedroom 6
- 3 bathrooms and wc
- Refitted kitchen/family/dining room
- Garage to the rear and parking
- Council tax band F Wokingham
- Satellite / Fibre TV available with BT, Virgin & Sky
- All mains services
- Ultrafast broadband 1000 Mbps





This floorplan is for illustration purposes only and is not to scale. The position and size of doors, windows, appliances and other features are approximate.

Score	Energy rating	Current	Potential
92+	A		
81-91	B		
69-80	C	74 C	78 C
55-68	D		
39-54	E		
21-38	F		
1-20	G		

Wokingham | 01189 072777 | wokingham@winkworth.co.uk

[winkworth.co.uk](https://www.winkworth.co.uk)

Winkworth wishes to inform prospective buyers and tenants that these particulars are a guide and act as information only. All our details are given in good faith and believed to be correct at the time of printing but they don't form part of an offer or contract. No Winkworth employee has authority to make or give any representation or warranty in relation to this property. All fixtures and fittings, whether fitted or not are deemed removable by the vendor unless stated otherwise and room sizes are measured between internal wall surfaces, including furnishings.

We are required by law to conduct anti-money laundering checks on all those buying a property. Whilst we retain responsibility for ensuring checks and any ongoing monitoring are carried out correctly, the initial checks are carried out on our behalf by Landmark who will contact you once you have had an offer accepted on a property you wish to buy. The cost of these checks is £25 per person and this will need to be paid by you in advance of us issuing a memorandum of sale, directly to Landmark, and is non-refundable.

Winkworth

for every step...