

LEWGARS AVENUE, KINGSBURY, LONDON, NW9
£795,000 FREEHOLD

4 BEDROOM EXTENDED END OF TERRACE DREAM HOME

Kingsbury | 020 8204 0000 | kingsbury@winkworth.co.uk

Winkworth

winkworth.co.uk

See things differently

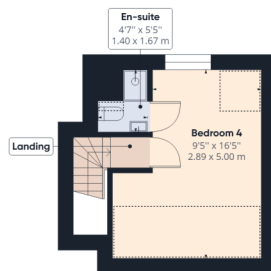
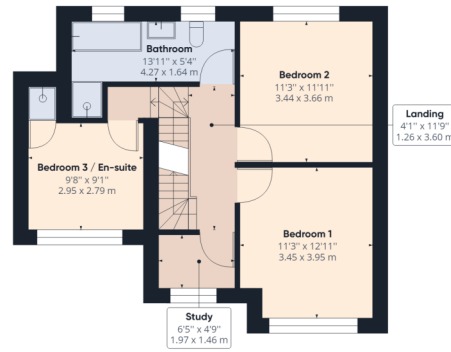
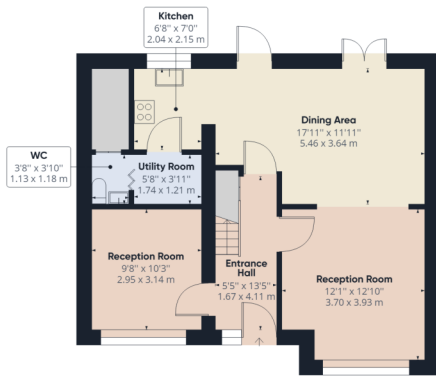


Winkworth are proud to welcome to the market as sole agents this recently and remarkably renovated model property. Sleek and stylish throughout, and organised over three floors, this stunning home comprises of 2 pristine reception rooms, one of which flaunts open plan living adjoining with a vibrant dining area and kitchen with convenient separate utility area and W/C. The first floor houses three gorgeous double bedrooms, one complete with an en-suite, and a family bathroom. The loft area of the property has been fully renovated to create a fourth bedroom complete with en suite. Externally, the front of the property benefits from a secure gated entry system allowing entry to the driveway offering off street parking for several cars, and the rear patio area presents a relaxing, private outdoor space to be enjoyed by all family members. This hidden gem is beautifully positioned less than 1 mile from Kingsbury High Road's variety of amenities, and commuters can take advantage of Kingsbury Station (Jubilee Line) transporting you from suburb to city in less than half an hour. Stunning and scenic Fryent Country Park lies a short stroll away, whilst highly rated primary and secondary schools including St Robert Southwell, Fryent Primary, Kingsbury High, and Lycée International de Londres are all easily reachable within the catchment area. A personal insight is highly recommended in order to appreciate this outstanding home at its entirety.



Winkworth





Approximate total area⁽¹⁾

1438.85 ft²133.67 m²

Reduced headroom

68.04 ft²6.32 m²

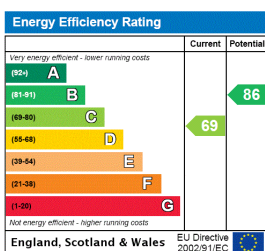
(1) Excluding balconies and terraces

Reduced headroom
(below 1.5m/4.92ft)

While every attempt has been made to ensure accuracy, all measurements are approximate, not to scale. This floor plan is for illustrative purposes only.

GIRAFFE360

This floorplan is for illustration purposes only and is not to scale. The position and size of doors, windows, appliances and other features are approximate.



Kingsbury | 020 8204 0000 | kingsbury@winkworth.co.uk

Winkworth

winkworth.co.uk

See things differently

Winkworth wishes to inform prospective buyers and tenants that these particulars are a guide and act as information only. All our details are given in good faith and believed to be correct at the time of printing but they don't form part of an offer or contract. No Winkworth employee has authority to make or give any representation or warranty in relation to this property. All fixtures and fittings, whether fitted or not are deemed removable by the vendor unless stated otherwise and room sizes are measured between internal wall surfaces, including kitchens.