



LUTWYCHE ROAD, LONDON, SE6
£800,000 FREEHOLD

Forest Hill | | foresthill@winkworth.co.uk



DESCRIPTION:

Guide price £800,000 - £850,000

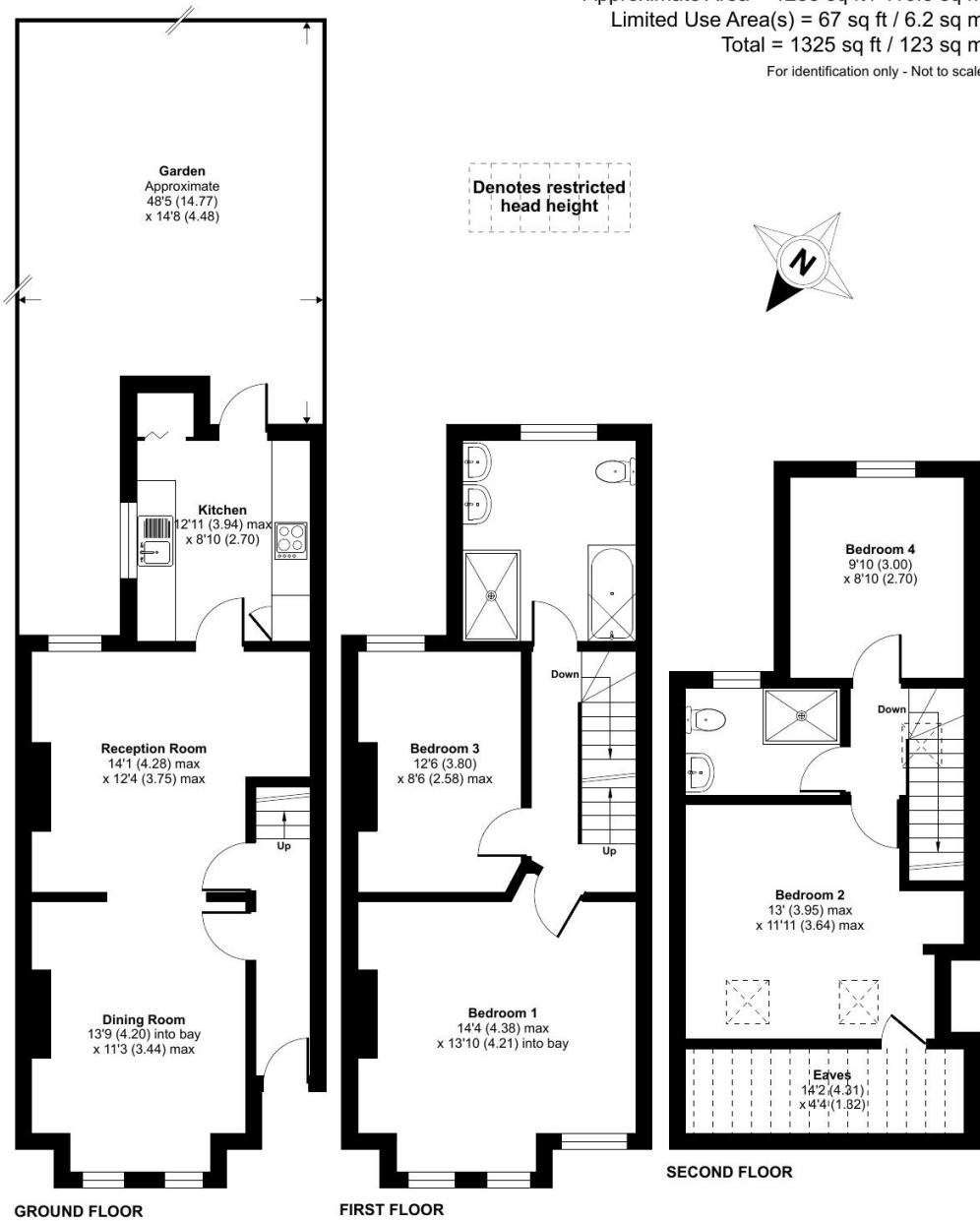
Discover this delightful period terraced house offering four spacious bedrooms, perfect for growing families or those in need of flexible living space. The property features a bright and airy living area, a modern kitchen and a 48ft garden.





Lutwyche Road, London, SE6

Approximate Area = 1258 sq ft / 116.8 sq m
Limited Use Area(s) = 67 sq ft / 6.2 sq m
Total = 1325 sq ft / 123 sq m
For identification only - Not to scale



Floor plan produced in accordance with RICS Property Measurement Standards incorporating International Property Measurement Standards (IPMS2 Residential). © n/checon 2025. Produced for Winkworth Forest Hill and New Cross. REF: 1331009

This floorplan is for illustration purposes only and is not to scale. The position and size of doors, windows, appliances and other features are approximate.

Tenure: Freehold

Score	Energy rating	Current	Potential
92+	A		
81-91	B		
69-80	C		
55-68	D		
39-54	E		
21-38	F		
1-20	G		

71 C 80 C