

Egerton Gardens, London, SW3  
£4,350 PCM

2  1  1 



Winkworth Knightsbridge  
020 7589 6616 | [knightsbridge@winkworth.co.uk](mailto:knightsbridge@winkworth.co.uk)

**Winkworth**

for every step...

# Elegant Top-Floor Two Bedroom Flat with Stunning Garden Views

## ABOUT THIS HOUSE

A fantastic two-bedroom flat on the top floor (with lift) of this period building with fabulous views over the gardens. room, two good sized double bedrooms with ample fitted storage and a large modern bathroom. It also comes with access to the communal gardens.

Beautifully refurbished to a very high standard it comprises spacious and light reception, modern kitchen/dining

## KEY FEATURES

- 2 bedrooms
- 1 reception room
- 1 bathrooms
- 1002 Square Feet
- Upper floor with lift
- Decorated to a high standard













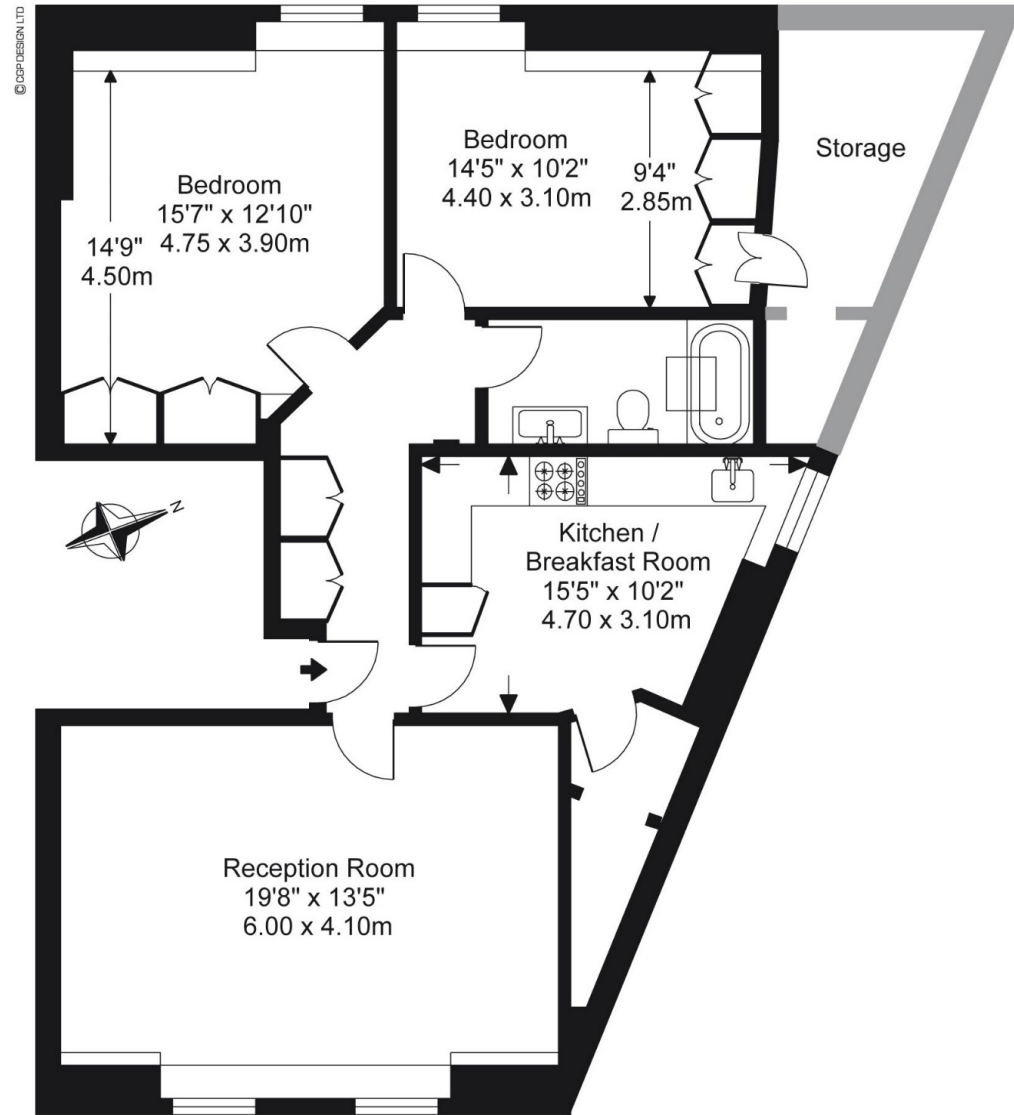
## FINER DETAILS

- 2 bedrooms
- 1 reception room
- 1 bathrooms
- 1002 Square Feet
- Upper floor with lift
- Decorated to a high standard

Holding Deposit: £1003

Deposit: £5019

Energy Efficiency Rating		
	Current	Potential
Very energy efficient - lower running costs		
(92+) <b>A</b>		
(81-91) <b>B</b>		
(69-80) <b>C</b>		
(55-68) <b>D</b>		
(39-54) <b>E</b>		
(21-38) <b>F</b>		
(1-20) <b>G</b>		
Not energy efficient - higher running costs		
	41	59
EU Directive 2002/91/EC		
England, Scotland & Wales		



Fourth Floor





Winkworth Knightsbridge  
020 7589 6616 | [knightsbridge@winkworth.co.uk](mailto:knightsbridge@winkworth.co.uk)

**Winkworth**

for every step...