



## Grove Hall Court, St John's Wood, London, NW8

£365,000 *Leasehold*



A well-maintained, one double-bedroom apartment, positioned on the raised ground floor of this popular red-brick mansion block, which is located half a mile away from Lord's Cricket Ground, Regent's Park, St John's Wood High Street and Underground Station (Jubilee Line) in addition to Maida Vale Underground Station (Bakerloo Line). This secure, portered development has a grand entrance lobby with art-deco features throughout, plus the added benefit of communal heating and hot water. The property is being sold with no onward chain and a lease-term which expires 24/06/2076.



**St John's Wood**

020 7586 7001 | [stjohnswood@winkworth.co.uk](mailto:stjohnswood@winkworth.co.uk)





## KEY FEATURES

- Bedroom
- Shower Room
- Separate Kitchen
- Reception Room
- Ground Floor
- Porterage
- Leasehold



## MATERIAL INFO

**Tenure:** Leasehold

**Term:** 50 year and 10 months

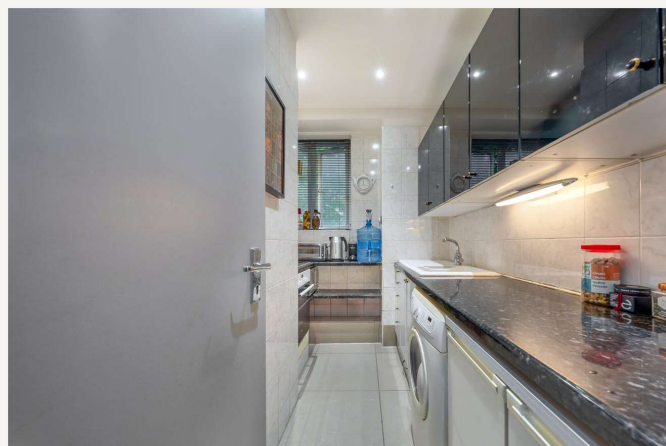
**Service Charge:** £4,859 per annum Includes Heating & Hot Water

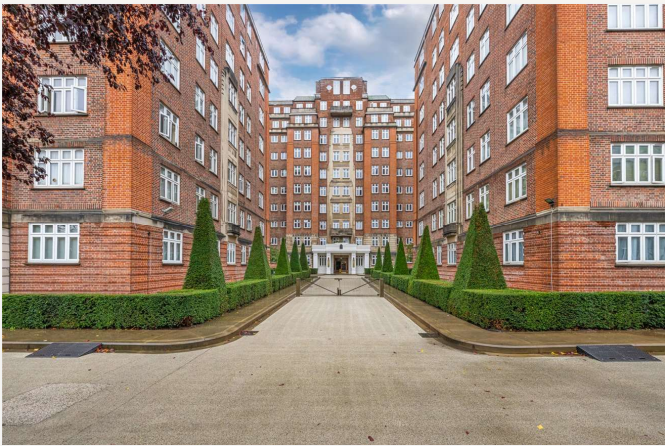
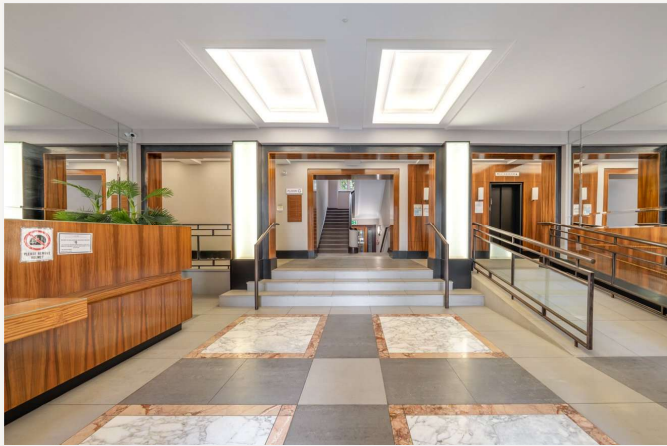
**Reserve Fund Charge:** £5,036 per annum

**Ground Rent:** £120 Annually (subject to increase)

**Council Tax Band:** D

**EPC rating:** C





Score	Energy rating	Current	Potential
92+	A		
81-91	B		
69-80	C	76 C	80 C
55-68	D		
39-54	E		
21-38	F		
1-20	G		

For more information, scan the QR code or visit the link below

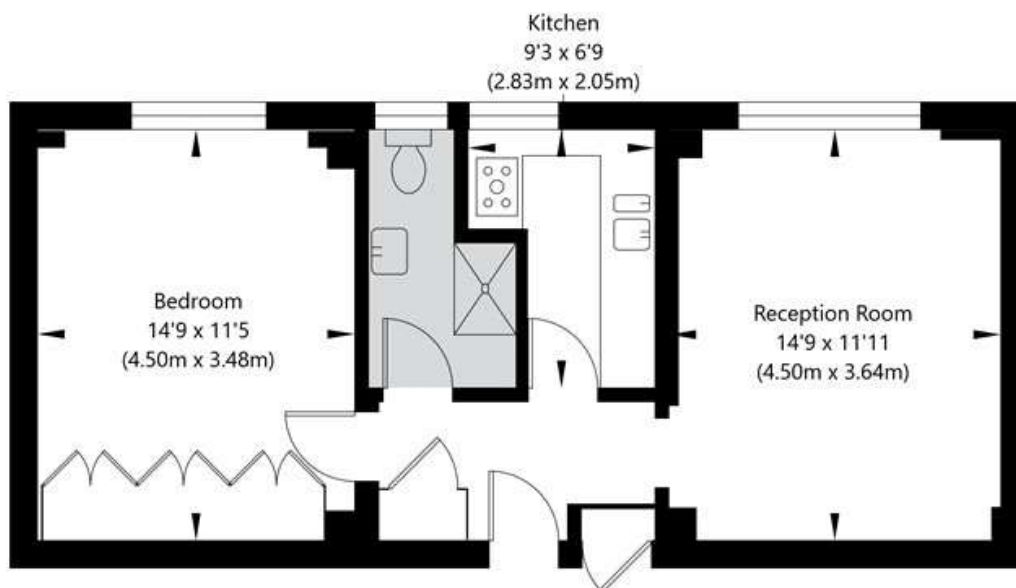


<https://www.winkworth.co.uk/sale/property/SJD250274>



## Grove Hall Court, Hall Road, London NW8 9NX

Ground Floor  
GROSS INTERNAL FLOOR AREA  
APPROX. 47.53 SQ M / 512 SQ FT



APPROXIMATE GROSS INTERNAL FLOOR AREA 47.53 SQ M / 512 SQ FT  
THIS FLOOR PLAN IS FOR ILLUSTRATIVE PURPOSES ONLY AND  
SHOULD BE USED FOR THIS PURPOSE BY PROSPECTIVE APPLICANTS AS ITS NOT TO SCALE.

(c) AMBERSHORE PIX LIMITED / PHOTO - VIDEO - FLOOR PLANS / 0800 999 1577 / [WWW.AMBERSHOREPIX.CO.UK](http://WWW.AMBERSHOREPIX.CO.UK)

Where no figures are shown, we have been unable to ascertain the information. All figures that are shown were correct at the time of printing.

**St John's Wood**

020 7586 7001 | [stjohnswood@winkworth.co.uk](mailto:stjohnswood@winkworth.co.uk)

Winkworth wishes to inform prospective buyers and tenants that these particulars are a guide and act as information only. All our details are given in good faith and believed to be correct at the time of printing but they don't form part of an offer or contract. No Winkworth employee has authority to make or give any representation or warranty in relation to this property. All fixtures and fittings, whether fitted or not are deemed removable by the vendor unless stated otherwise and room sizes are measured between internal wall surfaces, including furnishings.