



PECKHAM RYE, PECKHAM RYE, LONDON, SE15
£465,000 LEASEHOLD

**A BEAUTIFUL ONE DOUBLE BEDROOM
MAISONETTE SITUATED IN A STUNNING
FLAT FRONTED GEORGIAN BUILDING.**

Dulwich | 020 8299 2722 | dulwich@winkworth.co.uk

Winkworth

winkworth.co.uk

See things differently

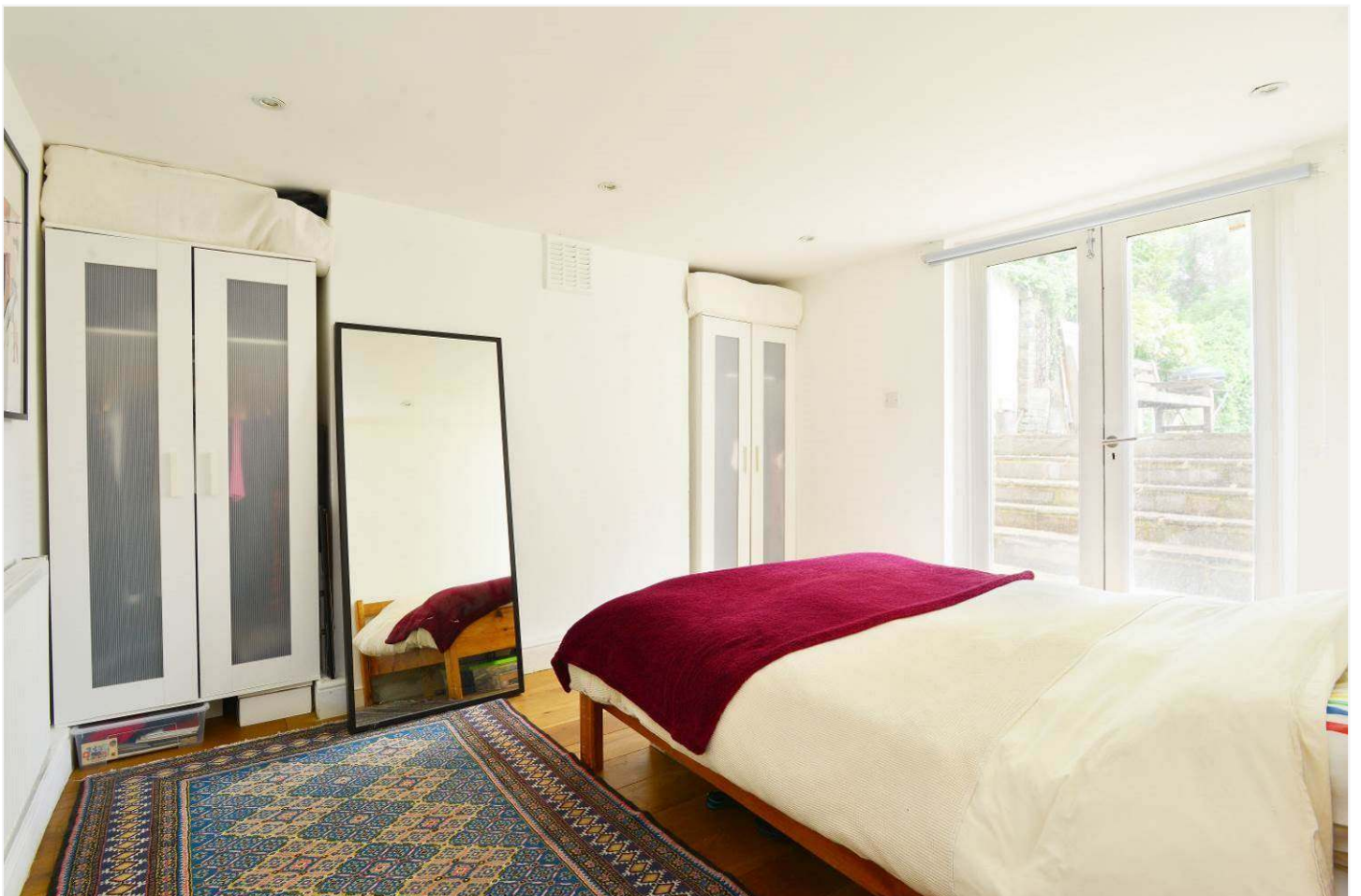


DESCRIPTION:

This beautifully presented one double bedroom ground floor maisonette is situated in a stunning flat fronted Georgian building, overlooking Peckham Rye Park. The property comprises a large reception room, modern kitchen, bathroom and good size double bedroom with doors leading out onto a private patio area and steps leading up to a private section of garden to rear. Perfectly situated to benefit from easy access to the bars, restaurants and shops on Lordship Lane as well as those on Bellenden Road and a stone's throw away from Peckham Rye Park. Transport links are provided via Peckham Rye with connections on the East London tube line. Offered to the market chain free with early viewing recommended.

AT A GLANCE

- One Double Bedroom
- Ground Floor Maisonette
- Large Reception
- Modern Kitchen & Bathroom
- Private Section Of Garden
- Leasehold
- Chain Free
- Close To Peckham Rye Park



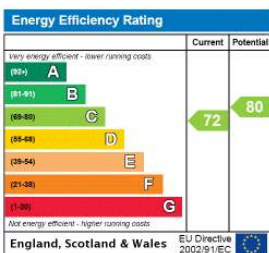
Peckham Rye, East Dulwich, SE22

Total Area: 62.4 m² ... 672 ft²



This plan is for layout guidance only. Drawn in accordance with RICS guidelines.
Not drawn to scale unless stated.

This floorplan is for illustration purposes only and is not to scale. The position and size of doors, windows, appliances and other features are approximate.



Dulwich | 020 8299 2722 | dulwich@winkworth.co.uk

Winkworth

winkworth.co.uk

See things differently

Winkworth wishes to inform prospective buyers and tenants that these particulars are a guide and act as information only. All our details are given in good faith and believed to be correct at the time of printing but they don't form part of an offer or contract. No Winkworth employee has authority to make or give any representation or warranty in relation to this property. All fixtures and fittings, whether fitted or not are deemed removable by the vendor unless stated otherwise and room sizes are measured between internal wall surfaces, including furnishings.